

**Appearance & Shape:** To be free from any defect such as flow, burrs, unevenness etc, As per IEC standards.

**Effective Parameters irrespective of material grade (per piece)**

- Effective Length ( $L_e$ ): 25.1 mm
- Effective Area ( $A_e$ ): 8.0mm<sup>2</sup>
- Effective Area ( $A_{Min}$ ): 8.0mm<sup>2</sup>
- Effective Volume ( $V_e$ ): 200mm<sup>3</sup>

**Approximate weight : 1.1g/pc**



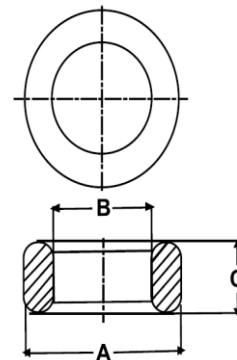
## T1004 OL (Un- Coated)

**Test Conditions: 10kHz/150mV/CFR COIL,N=01/Lo=Zero/25°C**

Material Grade	Initial Permeability ( $\mu_{iac}$ )	AL Value (nH)	Ordering code
CF196	2000 $\pm$ 20%	800+30%/-20%	CF196T1004
CF139	2100 $\pm$ 20%	850+30%/-20%	CF139T1004
CF130	3000 $\pm$ 20%	1200+30%/-20%	CF130T1004
CF195A	5000 $\pm$ 20%	1900+30%/-20%	CF195AT1004
CF265	5000 $\pm$ 20%	1900+30%/-20%	CF265T1004
CF190	6000 $\pm$ 20%	2400+30%/-20%	CF190T1004
CF197	7000 $\pm$ 20%	2800+30%/-20%	CF197T1004
CF199	9000 $\pm$ 20%	3600 $\pm$ 30%	CF199T1004

## Dimensions(Un-coated Core)

Dimension	Nominal (in mm)	Maximum (in mm)	Minimum (in mm)
A	10.0	10.3	9.7
B	6.0	6.2	5.8
C	4.0	4.3	3.7



For general terms and conditions please visit: [http://www.cosmoferrites.com/Downloads/Downloads/bcb70e7c-ae33-40ec-a881-0d5120db57b6\\_GTC.pdf](http://www.cosmoferrites.com/Downloads/Downloads/bcb70e7c-ae33-40ec-a881-0d5120db57b6_GTC.pdf)

**Regd. Office & Works:** Jabli, Distt. Solan, Himachal Pradesh – 173 209 (India)

Tel: +91 1792 277231/32/36, Fax: +91 1792 277234

E-mail: sales@cosmoferrites.com