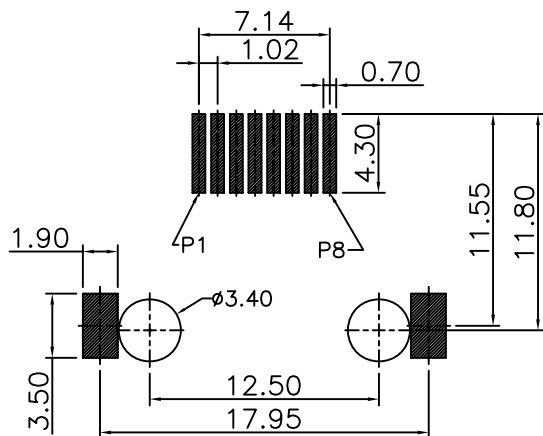
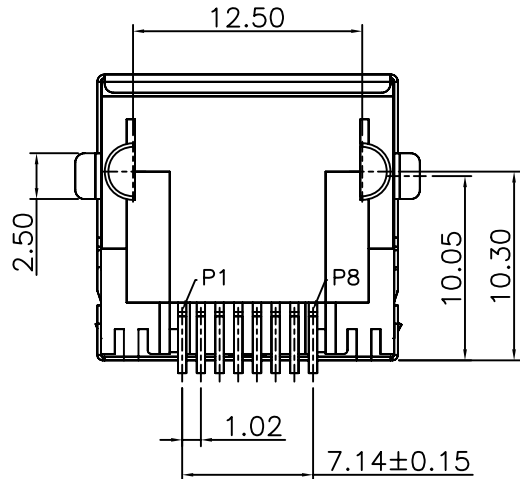
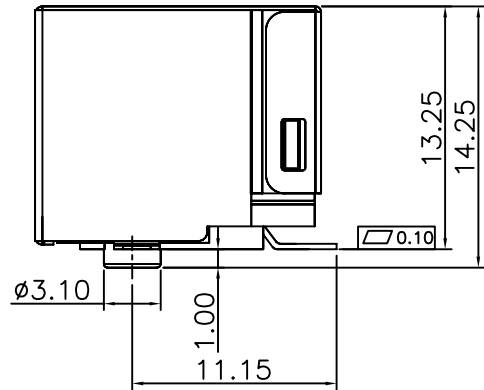
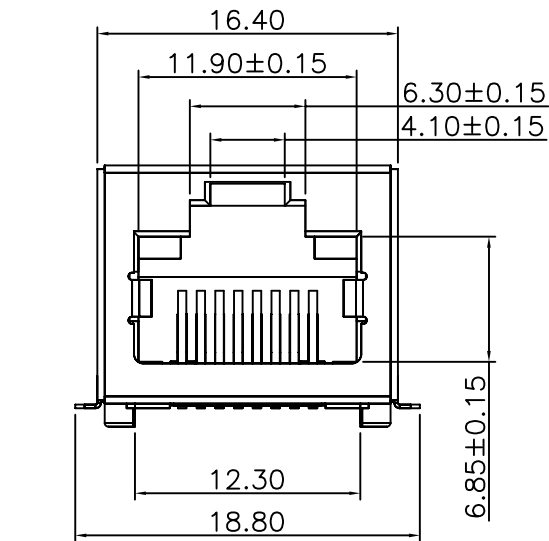


REVISION RECORD		
REV	DESCRIPTION	DATE
A/0		2015/02/10



RECOMMENDED PCB LAYOUT  
PTOLERANCE=±0.05

SPECIFICATION NOTES:

ELECTRICAL:

- 1.VOLTAGE RATING: 125 VAC RMS
- 2.CURRENT RATING: 1.5 AMP
- 3.CONTACT RESISTANCE: 20mΩ MAX.
- 4.INSULATION RESISTANCE: 1000MΩ MIN. AT500V DC.
- 5.DIELECTRIC STRENGTH: 1000 V AC OR 1500V DC RMS AT 0.5mA 50 Hz / 60 Hz FOR 1MINUTE

MECHANICAL:

- 1.HOUSING:LCP BLACK, UL 94V-0
- 2.CONTACT:PHOSPHOR BRONZE T=0.30MM
- 3.PLATING:GOLD PLATING AT CONTACT AREA, MATTE TIN AT TAIL 100U MIN., NICKEL 30U MIN. OVER ALL.
- 4.SHELL:BRASS T=0.20
- 5.OPERATING LIFE:750 CYCLES MIN.
- 6.MATING/UNMATING FORCE: 30N/3.06KGf MAX.
- 7.RETENTION STRENGTH:50N OR 30N MIN.FOR 60S±5S

ENVIRONMENTAL:

- 1.STORAGE:-40°C TO +85°C RELATIVE HUMIDITY<80%
- 2.GUARANTEE PERIOD:12 MONTHS
- 3.OPERATION: -40°C TO +85°C
- 4.MANUAL SOLDERING PARAMETERS:24H IR TEMPERATURE: 260±5°C 5~10 SECONDS.

NINGBO KLS ELECTRONIC CO.,LTD

Units	MM	Drawing	YEYOUYU	Material		Name	Part Number	L-KLS12-SMT33-8P8C-01
Scale	1 : 1	Check	WANGBIN	SHIELD	H65Y			
Rev'	A / 1	Approval	XUXIAORONG	HOUSING	LCP	File Name		
View		Date	2015/02/10	PIN	Qsn6. 5-0. 1			