

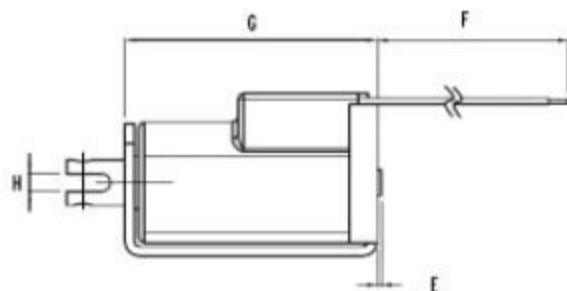
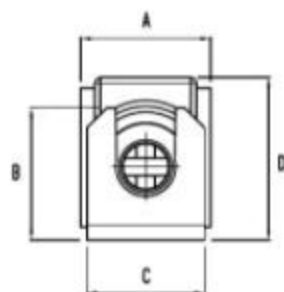
## SOLENOID PRODUCT SPECIFICATION

PART No.	VOLTAGE	DUTY CYCLE	POWER (W)	CURRENT (A)	DCR ( $\Omega$ ) *
DSOL-0844-24	24 VDC	100%	20	0.82	29
DSOL-0844-18	18 VDC	100%	20	1.1	16.2
DSOL-0844-12	12 VDC	100%	20	1.55	7.7
DSOL-0844-09	9 VDC	100%	20	2.25	4
DSOL-0844-05	5 VDC	100%	20	3.85	1.3

\* OPERATION: POWER TO PLL.

\* DCR VALUES ARE  $\pm 10\%$  AT 25°C\* WEIGHT ARE 95 GRAMS  $\pm 10\%$ 

## 1. MECHANICAL DIMENSIONS :



UNIT : INCH.

A = 0.92 MAX

B = 0.91 $\pm$ 0.02C = 0.84 $\pm$ 0.02

D = 1.13 MAX

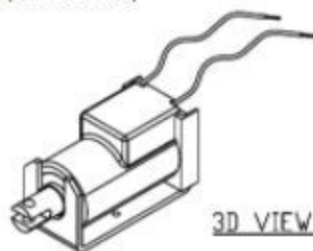
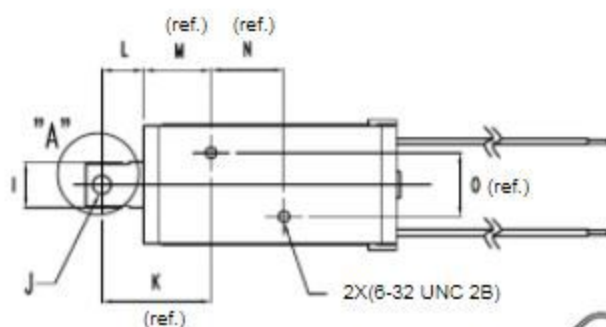
E = 0.0275 $\pm$ 0.0085F = 3.2 $\pm$ 0.2G = 1.73 $\pm$ 0.02H = 0.12 $\pm$ 0.015I =  $\varnothing$ 0.313 $\pm$ 0.005J =  $\varnothing$ 0.128 $\pm$ 0.002

K = 0.76(REF.)

L = 0.300 $\pm$ 0.015M = 0.46 $\pm$ 0.02(REF.)

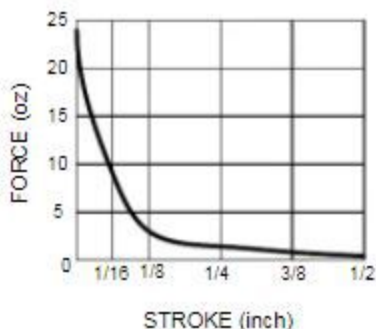
N = 0.500(REF.)

O = 0.437(REF.)



3D VIEW

UNSPECIFIED TOLERANCES

2 PLACE  $\pm$  0.013 PLACE  $\pm$  0.005ANGULAR  $\pm$  2°

LAYER TEST	W. Ø500 V&L	HI-POT
(S-F) : 500Vp. MIN.	COIL TO FRAME	Ø50/60Hz, 2mA
TEST ONLY COIL	100 MOVW MIN.	COIL TO FRAME 1000Vac, 10s