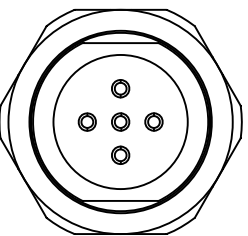
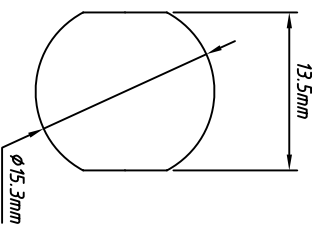


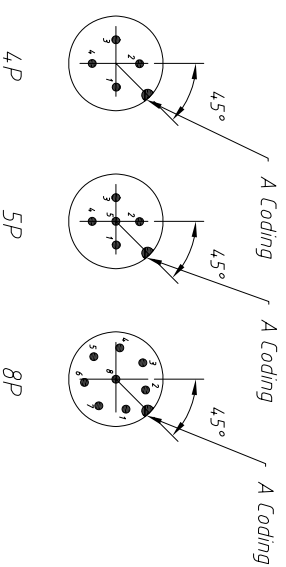
Front view



Back view



Panel Cut-out



Electrical & Mechanical data

IP rating: IP67

Contacts resistance: $\leq 5\text{ m}\Omega$

Insulation resistance: $\geq 100\text{ M}\Omega$

Orientation: Soldering, Rear lock

Over mold/ Shell: Metal shell

Connector contacts: Brass with gold plated

Coupling nut/screw: Brass with nickel plated screw

Insert/ Housing: PA66 + GF

Sealing: O-ring

Temperature Range: $-25^{\circ}\text{C} \sim +80^{\circ}\text{C}$

	4 Pin	5 Pin	8 Pin
Rated current	4A	4A	2A
Rated voltage	250V	60V	30V

Order information

L-KLS15-M12 A-CB2 XX

- L: Rohs
- M12: Screw type
- A: A-Coding
- B2: Soldering, Panel mount, Rear lock, Male, CNC Screw
- XX: Number of Contacts

GENERAL TOLERANCE

- X: ± 0.60
- .X: ± 0.38
- .XX: ± 0.25

ANGLE TOLERANCE

- X: $\pm 5^{\circ}$
- .X: $\pm 3^{\circ}$
- .XX: $\pm 2^{\circ}$

Description:

Soldering connector, Panel mount, Rear lock, Automation technology, M12, Male, CNC Screw

KLS P/N:

KLS15-M12A-CB2XX

KLS ELECTRONIC CO., LTD.

