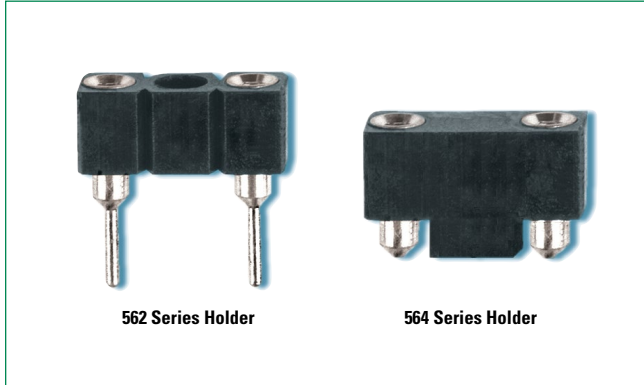


562/564 Series Circuit Board Mount Blocks for TE5/TR5 Type Fuses



**Product Characteristics**

Reading	562 Series	564 Series
<b>Compatible Fuses</b>	TR5/TE5	
<b>Materials</b>	Block: Black Thermoplastic, UL94 V-0 PET Terminals: Copper alloy; solderable tinned	
<b>Electrical Data (23°C)</b>	Rated Voltage: 250V Max. Current/Power: 6.3A/1.6W	
<b>Mounting</b>	PC Board, 5.08mm pin spacing	PC Board, 5.08mm pad spacing
<b>Minimum Cross Section</b>	Conducting path - 0.1mm <sup>2</sup>	Conducting path - 0.1mm <sup>2</sup>
<b>Unit Weight</b>	0.12g	0.44g

**Agency Approvals**

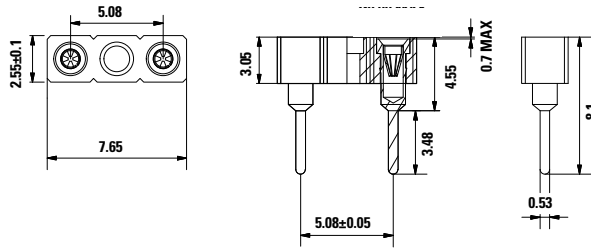
Agency	Agency File Number	
	562 Series	564 Series
	E14721	E14721

**Ordering Information**

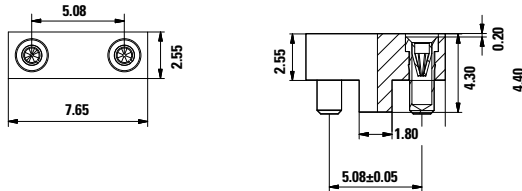
Ordering Number	Circuit Board Mounting	Packaging
56200001009	Thru-Hole	1000 (Bulk pack)
56400001009	Surface Mount	1500 (Tape /Reel)

**Dimensions** units in mm

**562 Series Holder**



**564 Series Holder**



**Additional Information**



**Datasheet 562 Series**



**Resources 562 Series**



**Samples 562 Series**



**Datasheet 564 Series**



**Resources 564 Series**



**Samples 564 Series**