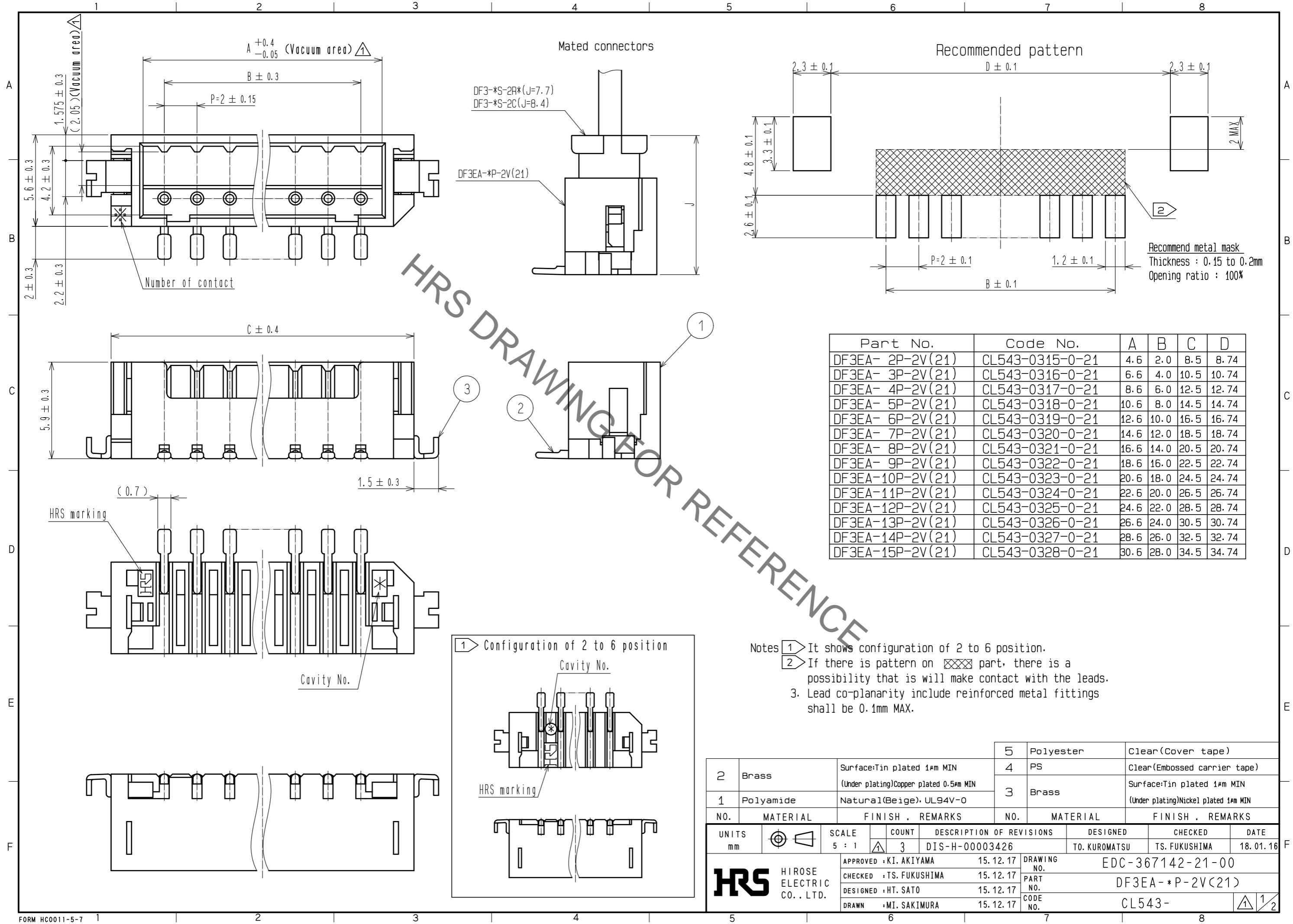


Apr.1.2020 Copyright 2020 HIROSE ELECTRIC CO., LTD. All Rights Reserved.  
In case of consideration for using Automotive equipment / device which demand high reliability, kindly contact our sales window correspondents.



HRS DRAWING FOR REFERENCE

Part No.	Code No.	A	B	C	D
DF3EA- 2P-2V(21)	CL543-0315-0-21	4.6	2.0	8.5	8.74
DF3EA- 3P-2V(21)	CL543-0316-0-21	6.6	4.0	10.5	10.74
DF3EA- 4P-2V(21)	CL543-0317-0-21	8.6	6.0	12.5	12.74
DF3EA- 5P-2V(21)	CL543-0318-0-21	10.6	8.0	14.5	14.74
DF3EA- 6P-2V(21)	CL543-0319-0-21	12.6	10.0	16.5	16.74
DF3EA- 7P-2V(21)	CL543-0320-0-21	14.6	12.0	18.5	18.74
DF3EA- 8P-2V(21)	CL543-0321-0-21	16.6	14.0	20.5	20.74
DF3EA- 9P-2V(21)	CL543-0322-0-21	18.6	16.0	22.5	22.74
DF3EA-10P-2V(21)	CL543-0323-0-21	20.6	18.0	24.5	24.74
DF3EA-11P-2V(21)	CL543-0324-0-21	22.6	20.0	26.5	26.74
DF3EA-12P-2V(21)	CL543-0325-0-21	24.6	22.0	28.5	28.74
DF3EA-13P-2V(21)	CL543-0326-0-21	26.6	24.0	30.5	30.74
DF3EA-14P-2V(21)	CL543-0327-0-21	28.6	26.0	32.5	32.74
DF3EA-15P-2V(21)	CL543-0328-0-21	30.6	28.0	34.5	34.74

- Notes
- 1 It shows configuration of 2 to 6 position.
  - 2 If there is pattern on part, there is a possibility that it will make contact with the leads.
  3. Lead co-planarity include reinforced metal fittings shall be 0.1mm MAX.

NO.	MATERIAL	FINISH	REMARKS	NO.	MATERIAL	FINISH	REMARKS
2	Brass	Surface: Tin plated 1μm MIN (Under plating) Copper plated 0.5μm MIN		5	Polyester		Clear(Cover tape)
1	Polyamide	Natural(Beige), UL94V-0		4	PS		Clear(Embossed carrier tape)
				3	Brass		Surface: Tin plated 1μm MIN (Under plating) Nickel plated 1μm MIN

UNITS	SCALE	COUNT	DESCRIPTION OF REVISIONS	DESIGNED	CHECKED	DATE
mm	5 : 1	3	DIS-H-00003426	TO. KUROMATSU	TS. FUKUSHIMA	18.01.16

APPROVED	CHECKED	DESIGNED	DRAWN	DATE
• KI. AKIYAMA	• TS. FUKUSHIMA	• HT. SATO	• MI. SAKIMURA	15.12.17

DRAWING NO.	PART NO.	CODE NO.
EDC-367142-21-00	DF3EA-*P-2V(21)	CL543-

Apr.1.2020 Copyright 2020 HIROSE ELECTRIC CO., LTD. All Rights Reserved.  
 In case of consideration for using Automotive equipment / device which demand high reliability, kindly contact our sales window correspondents.

