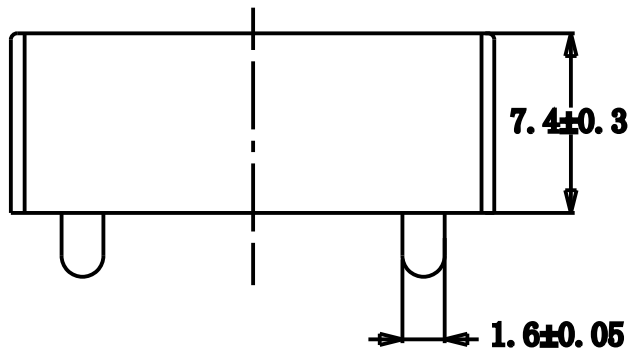
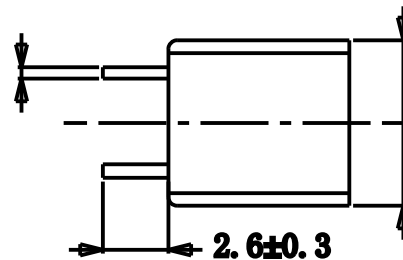


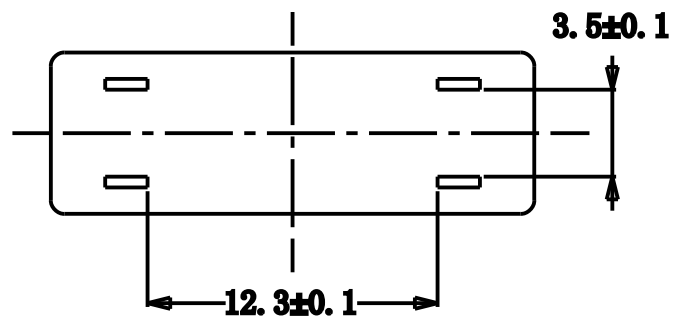
0.4 ± 0.05

6.8 ± 0.2



P.C.B moun Fuse Clip for ATU Blade fuse
Specification:

1. Electrical: Max. 40A 250V
 2. Contact Resistance: Max. 50m
 3. Solderability:
solder bath at 235°C, immersion timp 2~3 sec.
soldering iron at 350°C, apply time 2~3 sec.
 4. Material: Brass, Tin-Plated.
- *product Meet Rohs requirement.



NINGBO KLS ELECTRONIC CO.,LTD			
CUSTOMER NO.		DRAWN BR.	
CHECKED BY.		APPROVED BY.	
PART NO.	L-KLS5-3557-2	DRAWING NO.	
SCALE.		DATE.	2019/12/28
TOLERANCE.		TITLE.	
DECIMALS	ANGULAR	UNLESS OTHERWISE SPECIFIED DIMENSIONS ARE IN MM DO Not Scale Drawing	
X	±1		