

PRODUCT NUMBER

89898-YXXZHFLF

- RoHS COMPATIBLE, SEE NOTE 6
- OPTION LETTERS, NOTE 1b, OMIT FROM PRODUCT NUMBER IF NOT APPLICABLE
- A=PRODUCT WITH GREY PICK UP CAP IN TAPE & REEL, SEE TA-856.
- AV=PRODUCT WITH GREY PICK UP CAP IN TAPE & REEL FOR CUSTOMER DEDICATED PART, SEE TA-856.
- B=PRODUCT WITH PICK UP CAP PACKED IN TUBE.
- G=PRODUCT WITH BLACK PICK UP CAP IN TAPE & REEL, SEE TA-856.
- K=PRODUCT WITHOUT PICK UP CAP IN TAPE & REEL, SEE TA-856

NUMBER OF POSITIONS PER ROW: 02 TO 30.  
OVER THAN 30 POSITIONS ON SPECIAL REQUEST.

PLATING CODE

- 3= 0.76µm GOLD ON CONTACT AREA.  
2µm MIN MATTE TIN ON TAIL.
- 4= 2µm MIN MATTE TIN FULL PLATED  
1.27µm Ni MIN UNDERPLATING

NOTES:

- 1a- HOUSING & PICK UP CAP MAT'L: THERMOPLASTIC GLASS FILLED FLAME RETARDANT PER UL 94 V-0 COLOR: GREY.
- b- HIGH TEMPERATURE PLASTIC 30% GLASS REINFORCED NON HALOGEN FLAME RETARDED MOLDING COMPOUND COLOR BLACK.
- 2 - TERMINAL MATERIAL: PHOSPHOR BRONZE.
- 3 - PACKAGING:  
2 UP TO 4 POSITIONS PRODUCT PACKED IN PLASTIC BOX.  
5 UP TO 30 POSITIONS PRODUCT PACKED IN TUBE.  
WHOLE 89898-304B PACKED IN TUBE.
- 4 - TO DETERMINE DIMENSIONS:  
N = NUMBER OF POSITIONS PER ROW  
EXAMPLE: 8 POS: (N×2.54)-0.08=20.24 mm.
- 5 - RECOMMENDED IR PROFILE PER TA842.
- 6 - RoHS COMPATIBLE PRODUCT SPECIFICATIONS

a - PLATING:

- "LF" MEANS THE PRODUCT IS LEAD-FREE,  
2µm MINIMUM MATTE TIN OVER 1.27µm MINIMUM NICKEL UNDERPLATE.

b - MANUFACTURING PROCESS COMPATIBILITY

- THE HOUSING WILL WITHSTAND EXPOSURE TO 260°C PEAK TEMPERATURE FOR 30 SECONDS MAX IN A CONVECTION INFRA-RED OR VAPOR PHASE OR REFLOW OVEN.

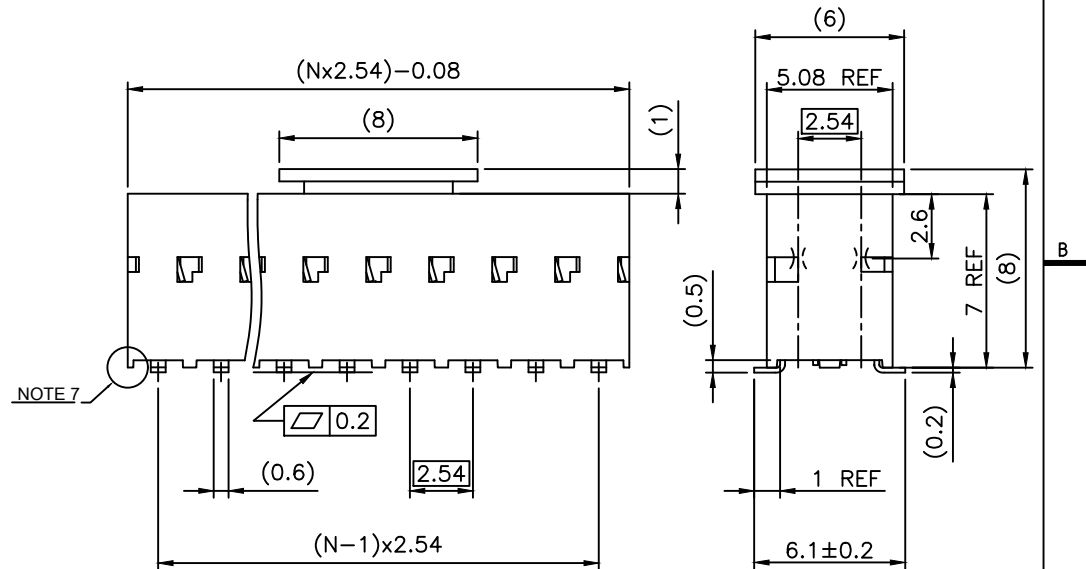
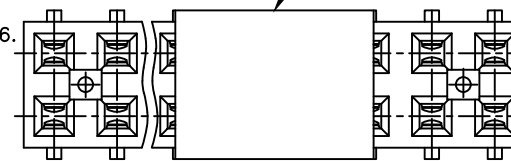
c - LABELING:

- MEETS PACKAGING SPECS AS PER GS-14-920

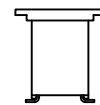
d - LEGAL STATEMENT: SEE GS-47-0004

- 7 - END STAND-OFFS FOR 2x2 UP TO 2x4 POS  
NO END STAND-OFFS FOR 2x5 UP TO 2x50 POS

OPTIONAL PICK UP CAP



NOTE 7

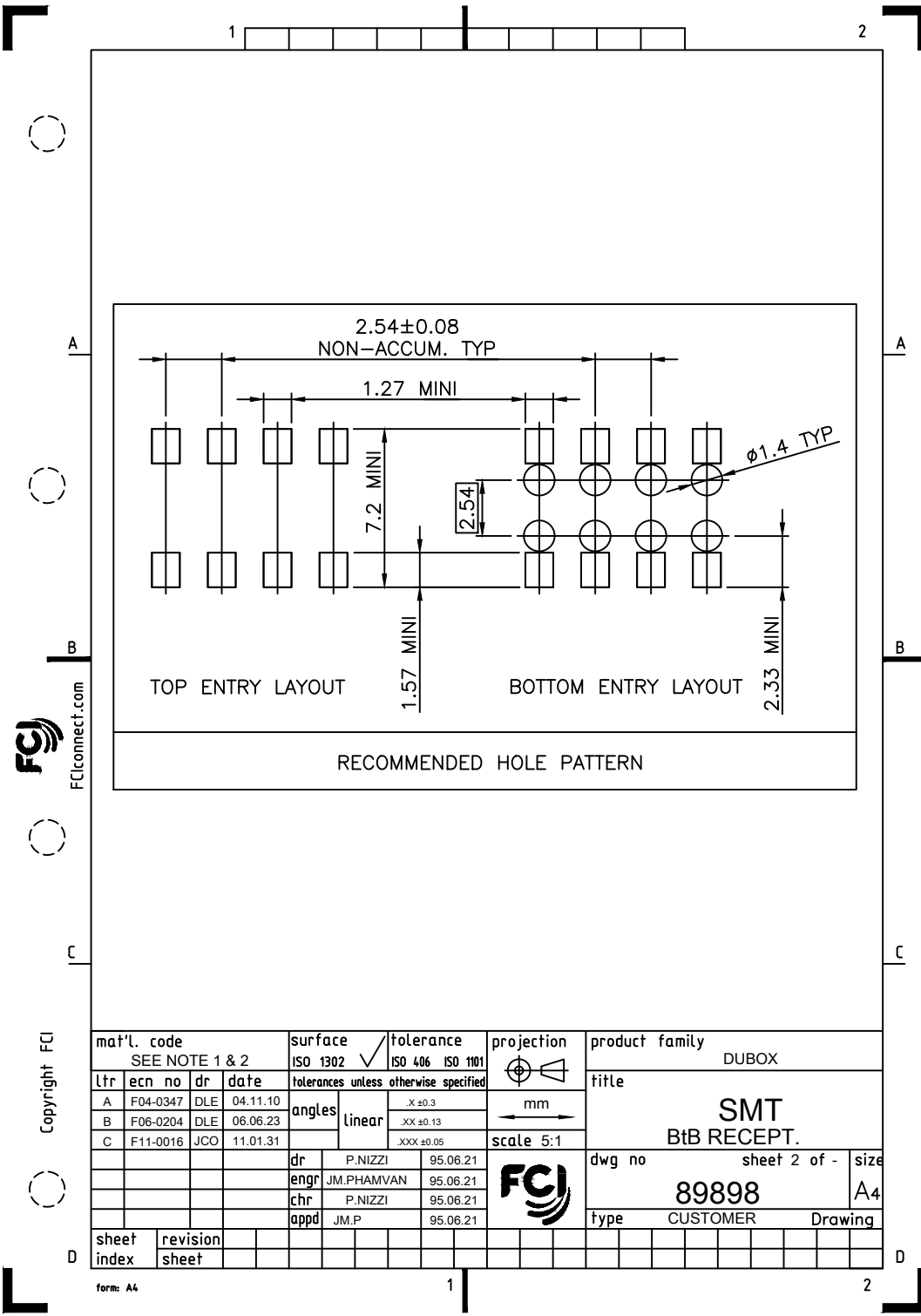


CAP ORIENTATION FOR  
2x2 POSITIONS ONLY

mat'l. code		surface		tolerance		projection		product family	
SEE NOTE 1 & 2		ISO 1302		ISO 406 ISO 1101		mm		DUBOX	
lfr		ecn no		dr		date		title	
AE F12-0047		JCO		12.07.16		14.09.04		SMT	
AF B-18748		LMU		14.09.04		14.10.21		BtB RECEPT.	
AG B-19123		LMU		14.10.21		16.07.01		sheet 1 of 2	
AH F-24429		AMA		16.07.01		16.09.28		size	
AJ F-25050		DDE		16.09.28		18.06.29		89898	
AK F-30587		DDE		18.06.29		95.06.21		A3	
				appd		JM.P		95.06.21	
sheet index		revision sheet		AK		C		type	
		1		2				CUSTOMER Drawing	



Copyright FCI



Copyright FCJ

mat'l. code SEE NOTE 1 & 2				surface ISO 1302 ✓		tolerance ISO 406 ISO 1101		projection mm		product family DUBOX	
ltr	ecn no	dr	date	tolerances unless otherwise specified				title			
A	F04-0347	DLE	04.11.10	angles	linear	.X ±0.3		SMT BtB RECEPT.			
B	F06-0204	DLE	06.06.23			.XX ±0.13					
C	F11-0016	JCO	11.01.31			.XXX ±0.05					
				dr	P.NIZZI	95.06.21		dwg no		sheet 2 of - size	
				engr	JM.PHAMVAN	95.06.21		89898		A4	
				chr	P.NIZZI	95.06.21		type		CUSTOMER Drawing	
				appd	JM.P	95.06.21					
sheet index		revision sheet									

form: A4