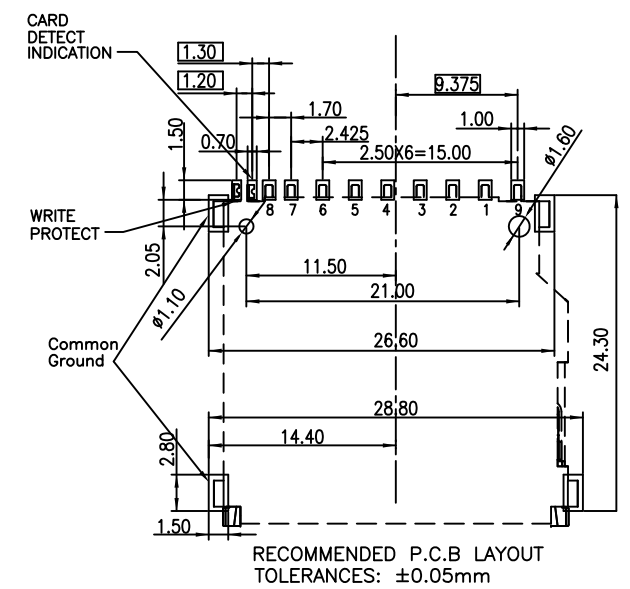


PIN#	NAME
1	CD/DAT3
2	CMD
3	VSS1
4	VDD
5	CLK
6	VSS2
7	DAT0
8	DAT1
9	DAT2

SPECIFICATION  
 MATERIAL  
 Insulator: LCP UL94V-0  
 Contacts: Copper Alloy  
 Shell: Copper Alloy  
 CONTACT PLATING  
 Underplate: 50u" Nickel  
 Contact Area: 15u" Gold Plating  
 Solder Tails Area: 100u" Tin(Lead Free)  
 ELECTRICAL  
 Current Rating: 1 Amps Max.  
 Contact Resistance: 100 mohms Max.  
 Insulation Resistance: 1000 Mohms Min @ 500 VDC  
 MECHANICAL  
 Mating Cycles: 10000 Cycles  
 Temperature Range: -25°C To +85°C

PRODUCT NUMBER:  
 104C-T A A 0-R  
 1 2 3 4

- 1.Type  
T:Top Mount
- 2.Contact Plating  
A:15u"Gold Plating
- 3.Stand Off  
A:0mm
- 4.RoHS



				UNLESS OTHERWISE SPECIFIED TOLERANCE				ATTEND	
				ANGLES		ANG.		±5°	
				LINEAR		0.		±0.3	
						0.0		±0.25	
						0.00		±0.20	
				SCALE	AS SHOWN	UNIT:		mm	
				DRAWN	Willis	2012/08/03		DRAWN NAME:	
				CHECKED	Angel	2012/08/03		SD Socket Top Mount Type	
				APPROVED	Ken	2012/08/03		PRODUCT NO.	104C-TAA0-R
REV.	DESCRIPTION	DATE	REV.	DESCRIPTION	DATE	SIZE	REV.	FILE NAME	
1						A4	1.0	104C-TAA0-R_B_2	