

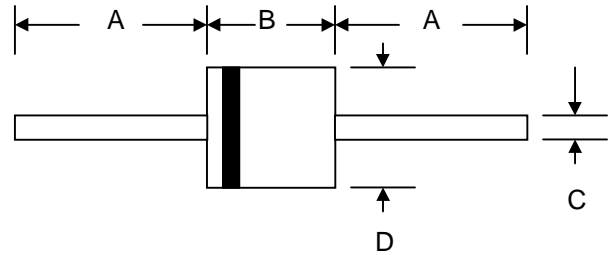
GENERAL PURPOSE RECTIFIER DIODE

Features

- Diffused Junction
- Low Forward Voltage Drop
- High Current Capability
- High Reliability
- High Surge Current Capability

Mechanical Data

- Case: Molded Plastic
- Terminals: Plated Leads Solderable per MIL-STD-202, Method 208
- Polarity: Cathode Band
- Weight: 2.1 grams (approx.)
- Mounting Position: Any
- Marking: Type Number
- Epoxy: UL 94V-O rate flame retardant



P-600		
Dim	Min	Max
A	25.4	—
B	8.60	9.10
C	1.20	1.30
D	8.60	9.10
All Dimensions in mm		

Maximum Ratings and Electrical Characteristics @ $T_A=25^\circ\text{C}$ unless otherwise specified

Single Phase, half wave, 60Hz, resistive or inductive load.
For capacitive load, derate current by 20%.

Characteristic	Symbol	P600A	P600B	P600D	P600G	P600J	P600K	P600M	Unit
Peak Repetitive Reverse Voltage	V_{RRM}								V
Working Peak Reverse Voltage	V_{RWM}	50	100	200	400	600	800	1000	
DC Blocking Voltage	V_R								
RMS Reverse Voltage	$V_{R(RMS)}$	35	70	140	280	420	560	700	V
Average Rectified Output Current (Note 1) @ $T_A = 60^\circ\text{C}$	I_O	6.0							A
Non-Repetitive Peak Forward Surge Current 8.3ms Single half sine-wave superimposed on rated load (JEDEC Method)	I_{FSM}	400							A
Forward Voltage @ $I_F = 6.0\text{A}$	V_{FM}	1.0							V
Peak Reverse Current @ $T_A = 25^\circ\text{C}$ At Rated DC Blocking Voltage @ $T_A = 100^\circ\text{C}$	I_{RM}	5.0 1.0							μA mA
Typical Junction Capacitance (Note 2)	C_j	150							pF
Typical Thermal Resistance Junction to Ambient (Note 1)	$R_{\theta JA}$	20							K/W
Operating Temperature Range	T_j	-50 to +150							$^\circ\text{C}$
Storage Temperature Range	T_{STG}	-50 to +150							$^\circ\text{C}$

*Glass passivated forms are available upon request

- Note: 1. Leads maintained at ambient temperature at a distance of 9.5mm from the case
2. Measured at 1.0 MHz and applied reverse voltage of 4.0V D.C.

GENERAL PURPOSE RECTIFIER DIODE

RATING AND CHARACTERISTIC CURVES

P600A THRU P600M

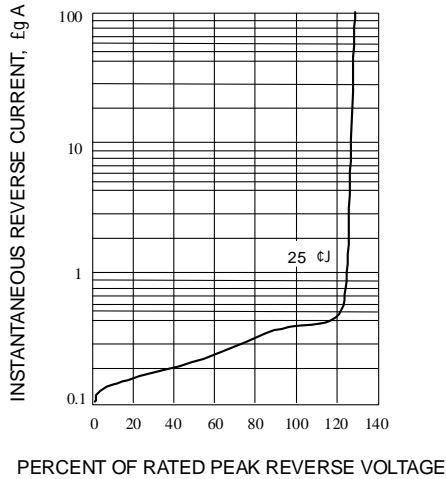


Fig. 1-TYPICAL REVERSE CHARACTERISTICS

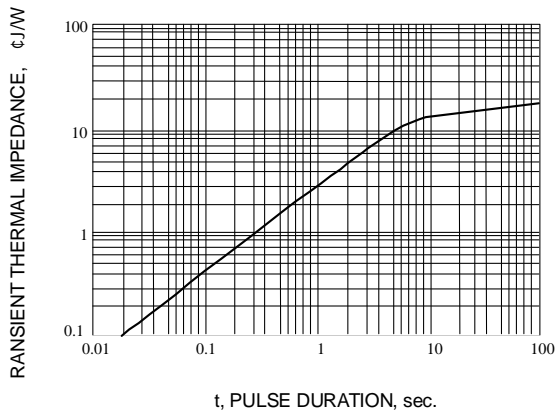


Fig. 3-TYPICAL TRANSIENT THERMAL IMPEDANCE

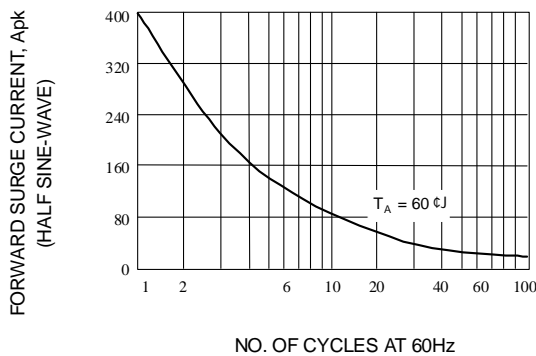


Fig. 5-MAXIMUM OVERLOAD SURGE CURRENT

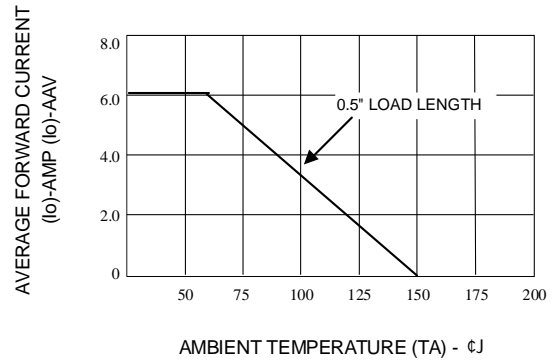


Fig. 2-FORWARD DERATING CURVE

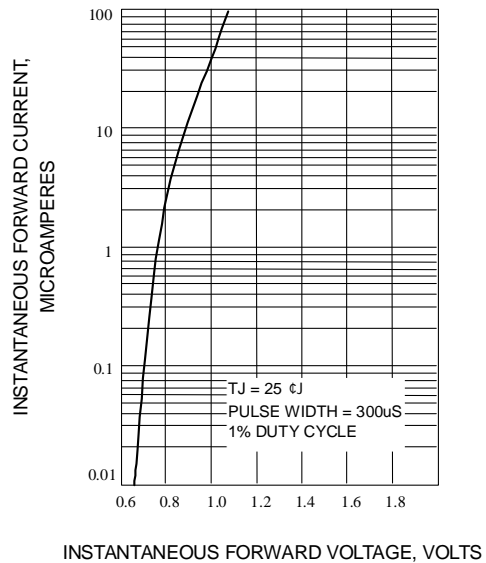


Fig. 4-TYPICAL INSTANTANEOUS FORWARD CHARACTERISTICS