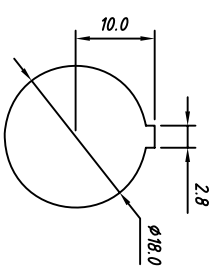
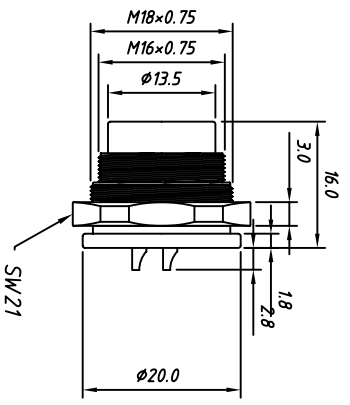
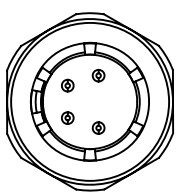


A	1		2				3	
	Male insert (mating shield)	Contact code	Rated Current	Rated Voltage	Withstand voltage	Insulation resistance	Contact resistance	Contact Diameter
		02	7	250	1500	1500	5	Ø15
		03	7	250	1500	1500	5	Ø15
		04	7	250	1500	1500	5	Ø15
		05	6	250	1500	1500	5	Ø15
		5A	5	50	500	1000	5	Ø15
		06	5	250	1500	1500	5	Ø15
		07	5	50	800	1000	5	Ø15
		08	5	50	500	1000	5	Ø15
		12	5	50	500	1000	3	Ø10
		14	5	50	500	1000	3	Ø10
		16	5	50	500	1000	3	Ø10
		19	5	50	500	1000	3	Ø10
		24	5	50	500	1000	3	Ø0.5
	UNIT		A	V	V.AC	MΩ	mΩ	mm



Front view



Back view

Order information

L-KLS15-253-J09-XX M2

- L: RoHS
- J09: C091 Miniature Circular Connector
- XX: Contacts Code
- M2: Soldering Connectors, Panel mount, Front lock, Male Pin

GENERAL TOLERANCE

X: ±0.60	X: ±5°
.X: ±0.38	.X: ±3°
.XX: ±0.25	.XX: ±2°

ANGLE TOLERANCE

PROJECTION	mm
UNITS	A4
SHEET SIZE	A4

Material: Zinc alloy, Nickel plated  
 SHELL Housing: PA66+GF 20%  
 Insert Housing: Brass, Silver plated  
 Contact: Solder  
 Termination: Threaded Coupling  
 Locking: Straight  
 Version: 500 cycles  
 Mating life: IP65  
 Cable Diameter: Ø6.0 ~ Ø8.5mm  
 Temperature Range: -25°C ~ +80°C

Description: Soldering Connectors, Panel mount, Front lock, Male, C091 Miniature Circular

KLS P/N: KLS15-253-J09-XXM2

Draw by: KLS ELECTRONIC CO., LTD.  
 Check by: KLS ELECTRONIC CO., LTD.  
 SCALE: A4

1	2	3	4	5	6	7	8
---	---	---	---	---	---	---	---