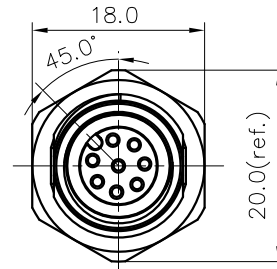
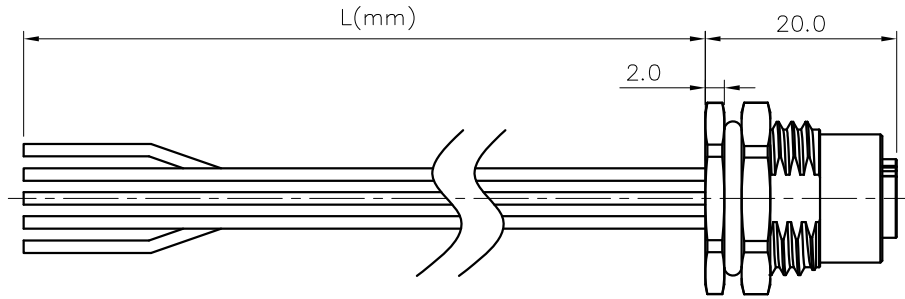


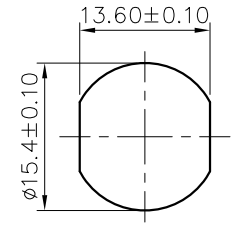
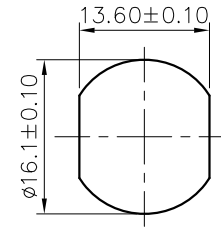
REVISION RECORD

| REV | ECN | DESCRIPTION | DRFT | DATE |
|-----|-----|-------------|------|------|
|-----|-----|-------------|------|------|



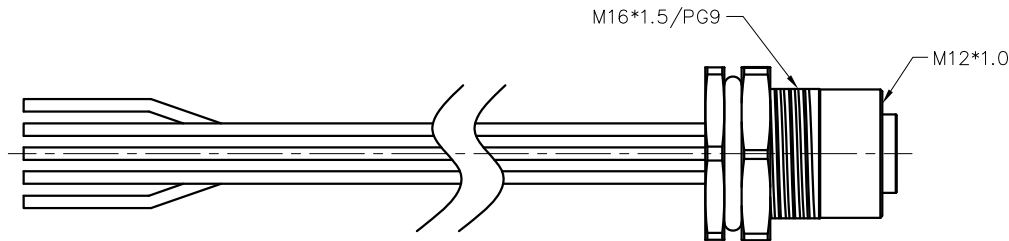
Thread specification:
M16*1.5

Thread specification:
PG9



Panel Mounted

Panel Mounted



SS-M12X-XXP-FF-SF8XXX-00A(H)

Coding: A,B,D

Pin number: 03,04,05,
06,08,10,12

Thread specification:
A: PG9;
B: M16*1.5

XX: 150~1500mm

15: 150±15mm

30: 300±20mm

50: 500±20mm

A0: 1000±40mm

A5: 1500±40mm

Wire Length L: 150~1500mm

NOTES:

1.Rated voltage/current : 3pin A: 250V / 4A

4pin A: 250V / 4A

5pin A: 60V / 4A

6pin A: 30V / 2A

8pin A: 30V / 2A

2.Withstanding voltage : 3,4pin: AC1500V/1Min

5pin: AC1120V/1Min

6,8pin: AC500V/1Min

3.Levels of protection: IP68

4.Cable specifications :

3pin A: 22AWG/0.34mm²,UL1061

4pin A: 22AWG/0.34mm²,UL1061

5pin A: 22AWG/0.34mm²,UL1061

6pin A: 24AWG/0.25mm²,UL1061

8pin A: 24AWG/0.25mm²,UL1061

5.Wire connection mode: soldering

6.Operating temperature: -25°C~+80°C

7.For Panel Thickness Max: 4.5mm

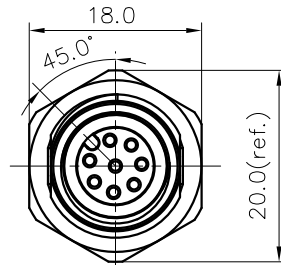
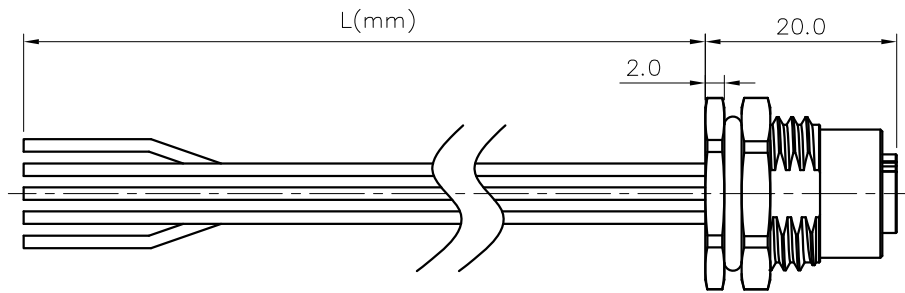
8.RoHS Compliance

| 3pin A Coding | 4pin A Coding | 5pin A Coding | 6pin A Coding | 8pin A Coding |
|----------------------------|----------------------------|----------------------------|----------------------------|----------------------------|
| | | | | |
| Pin Assignments Front View | Pin Assignments Front View | Pin Assignments Front View | Pin Assignments Front View | Pin Assignments Front View |
| | | | | 8 Red |
| | | | 7 Blue | 7 Blue |
| | | | 6 Pink | 6 Pink |
| | | 5 Grey | | 5 Grey |
| 4 Black | 4 Black | 4 Black | 4 Yellow | 4 Yellow |
| 3 Blue | 3 Blue | 3 Blue | 3 Green | 3 Green |
| 1 Brown | 1 White | 2 White | 2 Brown | 2 Brown |
| 1 Brown | 1 Brown | 1 Brown | 1 White | 1 White |
| Pin Wire Color | Pin Wire Color | Pin Wire Color | Pin Wire Color | Pin Wire Color |
| Pin Out | Pin Out | Pin Out | Pin Out | Pin Out |

| | | | | |
|------------------------|---------------------------------|---|------------|----------------------|
| DETACHED LISTS | PART NO.: SSM12XXXPFFSF8XXX00AH | 宁波高松电子有限公司 NINGBO DEGSON ELECTRICAL CO., LTD | | |
| | APPD: | NAME: SS-M12X-XXP-FF-SF8XXX-00A(H) | | |
| | CHKD: | TITLE: CUSTOMER DRAWING | | |
| | DRFT: LZ 2018.10.08 | REV: D0-1 | SHEET: 1/2 | |
| THIRD ANGLE PROJECTION | | DRAWING NO.: XXXXXXXX-XX-CXX | SCALE: 1:1 | DO NOT SCALE DRAWING |

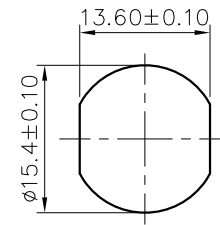
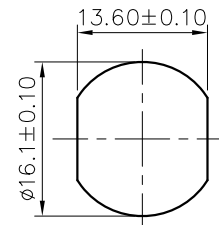
REVISION RECORD

| REV | ECN | DESCRIPTION | DRFT | DATE |
|-----|-----|-------------|------|------|
|-----|-----|-------------|------|------|



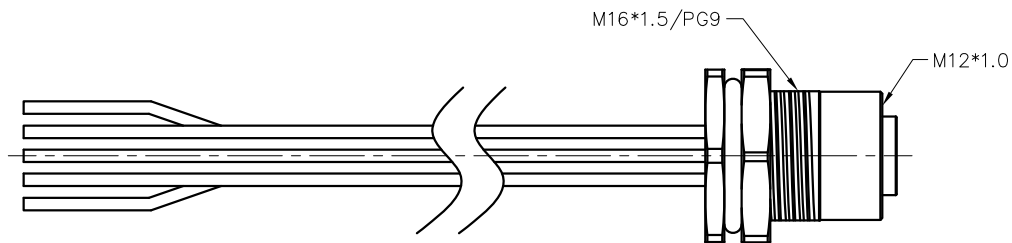
Thread specification:
M16*1.5

Thread specification:
PG9



Panel Mounted

Panel Mounted



SS-M12X-XXP-FF-SF8XXX-00A(H)
 Coding: A,B,D
 Pin number: 03,04,05, 06,08,10,12
 Thread specification:
 A: PG9;
 B: M16*1.5
 XX: 150~1500mm
 15: 150±15mm
 30: 300±20mm
 50: 500±20mm
 A0: 1000±40mm
 A5: 1500±40mm
 Wire Length L: 150~1500mm

NOTES:

- Rated voltage/current : 10pin A: 30V / 1.5A
12pin A: 30V / 1.5A
5pin B: 60V / 4A
4pin D: 250V / 4A
- Withstanding voltage : 10,12pin: AC500V/1Min
5pin B: AC1120V/1Min
4pin D: AC1500V/1Min
- Levels of protection: IP68
- Wire specifications :
10pin A: 26AWG/0.14mm²,UL1061
12pin A: 26AWG/0.14mm²,UL1061
5pin B: 22AWG/0.34mm²,UL1061
4pin D: 22AWG/0.34mm²,UL1061
- Wire connection mode: soldering
- Operating temperature: -25°C~+80°C
- For Panel Thickness Max: 4.5mm
- RoHS Compliance

| 10pin A Coding | | 12pin A Coding | | 5pin B Coding | | 4pin D Coding | |
|----------------------------|------------|----------------------------|------------|----------------------------|------------|----------------------------|------------|
| | | | | | | | |
| Pin Assignments Front View | | Pin Assignments Front View | | Pin Assignments Front View | | Pin Assignments Front View | |
| | | 12 | Red/Blue | | | | |
| | | 11 | Grey/Pink | | | | |
| 10 | Violet | 10 | Violet | | | | |
| 9 | Red | 9 | Red | | | | |
| 8 | Grey | 8 | Grey | | | | |
| 7 | Black | 7 | Black | | | | |
| 6 | Yellow | 6 | Yellow | | | | |
| 5 | Pink | 5 | Pink | 5 | Grey | | |
| 4 | Green | 4 | Green | 4 | Black | 4 | Black |
| 3 | White | 3 | White | 3 | Blue | 3 | Blue |
| 2 | Blue | 2 | Blue | 2 | White | 2 | White |
| 1 | Brown | 1 | Brown | 1 | Brown | 1 | Brown |
| Pin | Wire Color | Pin | Wire Color | Pin | Wire Color | Pin | Wire Color |
| | Pin Out | | Pin Out | | Pin Out | | Pin Out |

| | | | | |
|----------------|------------------------------------|---|------------------------------|------------|
| DETACHED LISTS | PART NO.: SSM12XXXPF8SF8XXX00AH | 宁波高松电子有限公司 NINGBO DEGSON ELECTRICAL CO., LTD | | |
| | APPD: | NAME: SS-M12X-XXP-FF-SF8XXX-00A(H) | | |
| | CHKD: | DRFT: LZ 2018.10.08 | TITLE: CUSTOMER DRAWING | REV: D0-1 |
| | | | DRAWING NO.: XXXXXXXX-XX-CXX | SHEET: 2/2 |
| | | | DO NOT SCALE DRAWING | SCALE: 1:1 |