

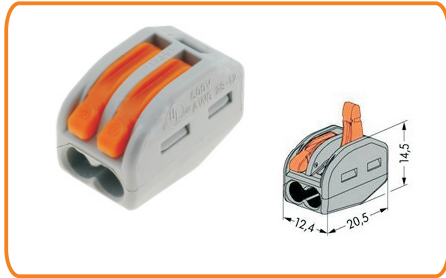
LED Connector



www.klsele.com

PUSH wire Connector

KLS2-CT258 COMPACT Splicing Connector, For all types of conductors 2.5 mm²



Features:

1. wago 222 type perfect analogue
WAGO P/N
222-412
222-413
222-415

KLS P/N
KLS2-CT258-02P
KLS2-CT258-03P
KLS2-CT258-05P

Electrical data

Rated voltage (II / 2)
Rated impulse voltage (II / 2)
Rated current
Legend (ratings)
Overvoltage category
Pollution degree

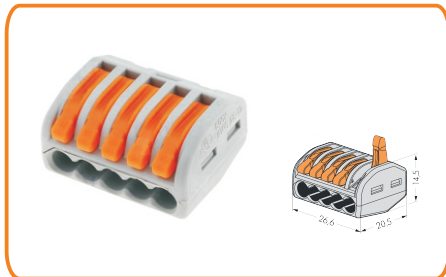
400 V
4 kV
32 A
(II / 2)
II
2



Connection data

Connection technology
Actuation type
Connectable conductor materials
Nominal cross section
Solid conductor
Stranded conductor
Fine-stranded conductor
Strip length
Total number of connection points
Total number of potentials
Type of wiring

CAGE CLAMP®
Lever
Copper
2.5 mm²
0.08 ~ 2.5 mm² / 28 ~ 12 AWG
0.08 ~ 2.5 mm² / 28 ~ 12 AWG
0.08 ~ 4.0 mm² / 28 ~ 12 AWG
9~10 mm / 0.35~0.39 Inch
2,3,5
1
Side-entry wiring



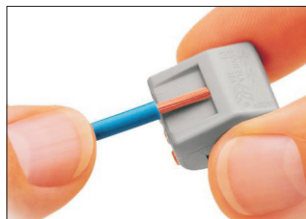
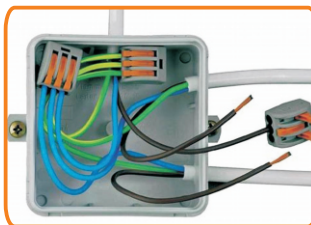
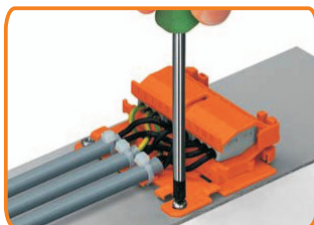
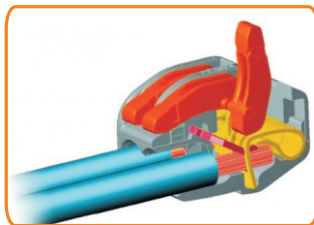
Material Data

Color
Flammability class per UL94

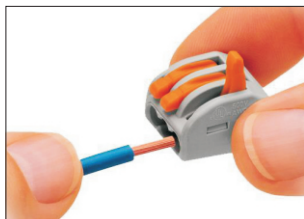
Gray
V2

Environmental Requirements

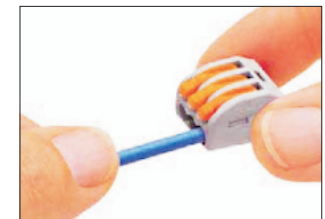
Surrounding air (operating) temperature 85 °C



Strip conductor to 9-10mm-refer to strip length guide printed on side of connector



Life fever to open clamping unit; insert stripped conductor



Lower the lever to close the clamping unit

