

H

G

F

E

D

C

B

A

H

G

F

E

D

C

B

A

SP-M12X-XXP-FF-SF800X-00A(H)

Coding: A,B,D

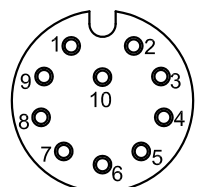
Pin number: 03,04,05,  
06,08,10,12

Thread specification:  
001: PG9  
002: M16\*1.5

REVISION RECORD

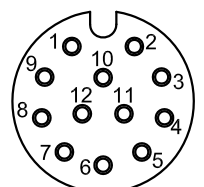
REV	ECN	DESCRIPTION	DRFT	DATE
-----	-----	-------------	------	------

10pin A Coding



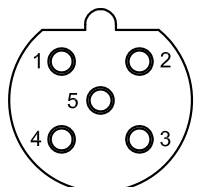
Pin Assignments Front View

12pin A Coding



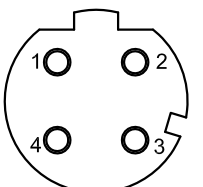
Pin Assignments Front View

5pin B Coding



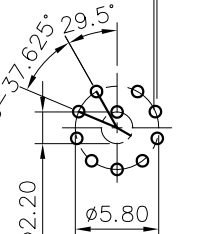
Pin Assignments Front View

4pin D Coding



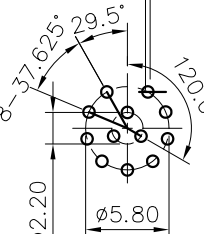
Pin Assignments Front View

10-ø0.80



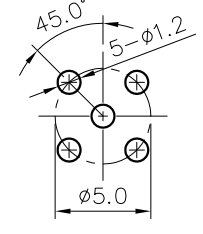
PCB Layout

12-ø0.80



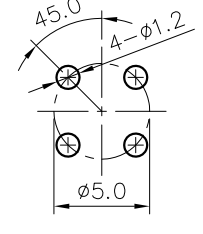
PCB Layout

45.0°



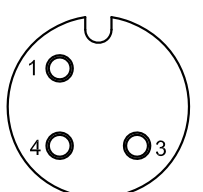
PCB Layout

45.0°



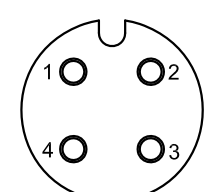
PCB Layout

3pin A Coding



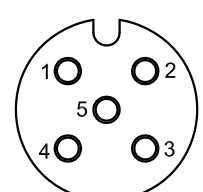
Pin Assignments Front View

4pin A Coding



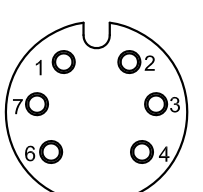
Pin Assignments Front View

5pin A Coding



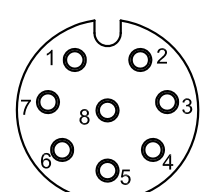
Pin Assignments Front View

6pin A Coding



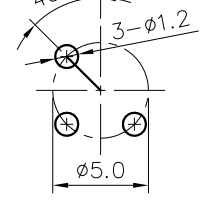
Pin Assignments Front View

8pin A Coding



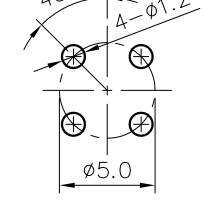
Pin Assignments Front View

45.0°



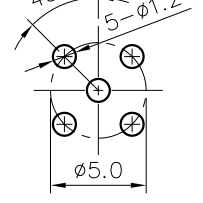
PCB Layout

45.0°



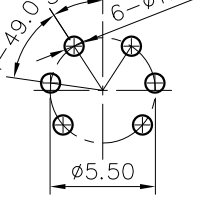
PCB Layout

45.0°



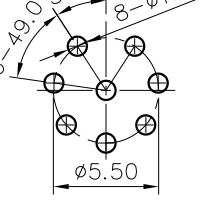
PCB Layout

49.0° 33.0°

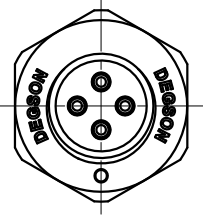


PCB Layout

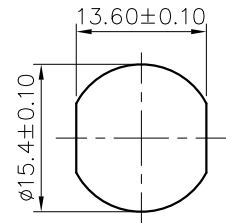
49.0° 33.0°



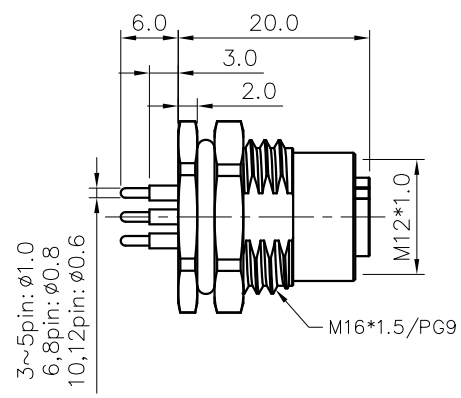
PCB Layout



Thread specification:  
PG9

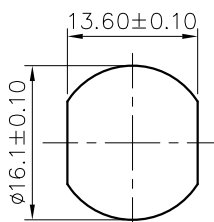


Panel Mounted



3~5pin: ø1.0  
6,8pin: ø0.8  
10,12pin: ø0.6

Thread specification:  
M16\*1.5



Panel Mounted

NOTES:

- Rated voltage/current :  
3pin A: 250V / 4A  
4pin A: 250V / 4A  
5pin A: 60V / 4A  
6pin A: 30V / 2A  
8pin A: 30V / 2A  
10pin A: 30V / 1.5A  
12pin A: 30V / 1.5A  
5pin B: 60V / 4A  
4pin D: 250V / 4A
- Withstanding voltage :  
3,4pin A: AC1500V/1Min  
5pin A: AC1120V/1Min  
6,8,10,12pin A: AC500V/1Min  
5pin B: AC1120V/1Min  
4pin D: AC1500V/1Min
- Levels of protection: IP68
- Wire connection mode: soldering(PCB)
- Operating temperature: -40°C~+105°C
- For Panel Thickness Max: 4.5mm
- RoHS Compliance

DETACHED LISTS	PART NO.: SPM12XXXPFSS800X00AH	宁波高松电子有限公司 NINGBO DEGSON ELECTRICAL CO., LTD		
	APPD:	NAME: SP-M12X-XXP-FF-SF800X-00A(H)		
	CHKD:	TITLE: CUSTOMER DRAWING		
	DRFT: LZ 2018.10.10	REV: D0-1	SHEET: 1/1	
		DRAWING NO.: XXXXXXXX-XX-CXX	SCALE: 1:1	DO NOT SCALE DRAWING