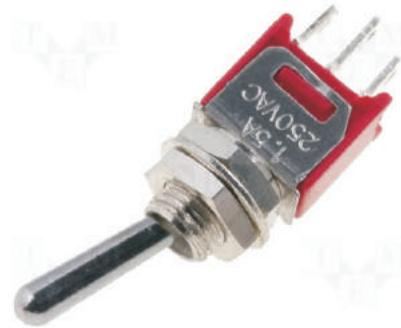


Toggle switches

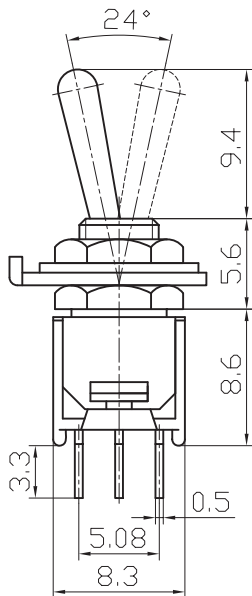
L-KLS7-SMS-103-A2 Sub-Miniature Toggle Switch

SPECIFICATIONS:

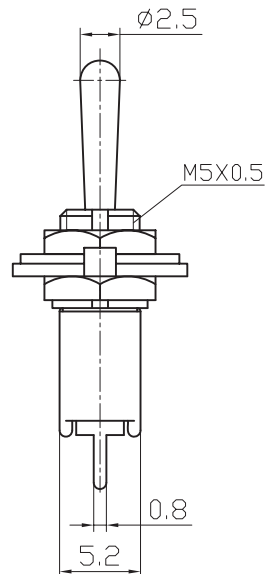
Rating: 3A 125VAC; 1.5A 250VAC
 Contact Resistance: 20mΩ max
 Insulation Resistance:500V DC 1000MΩ Min
 Dielectric Strength:1000V AC 1 Minute
 Operating Temperature:-25°C +85°C
 Electrical Life :10,000 cycles



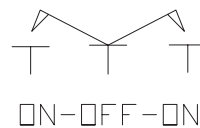
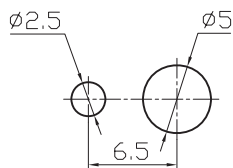
Outline Drawing



安装尺寸 (Mounting)



电路图 (Circuitry)



ORDER INFORMATION

L-KLS7-SMS-103-A2



KLS7-SMS-1 02-A 1 X X

Part Number

SMS:Toggle Switch Series

POLES: 1=Single Pole
2=Double Pole

CIRCUIT: 01=ON-OFF
02=ON-ON
03=ON-OFF-ON

BRACKET: T=With Bracket None=Without Bracket

Handle Cap Type: R=Red B=Black W=White
Y=Yello G=Green BL=Blue

Terminal Type: 1=Solder terminal 2=Pc terminal
3=Pc-H terminal 4=Pc-V terminal

Handle Type: A=Standard C=Short