

H

G

F

E

D

C

B

A

H

G

F

E

D

C

B

A

SP-M12X-XXP-MM-SF800X-00A(H)

Coding: A,B,D

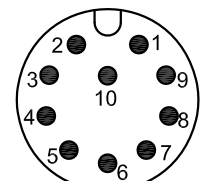
Pin number: 03,04,05,
06,08,10,12

Thread specification:
001: PG9
002: M16*1.5

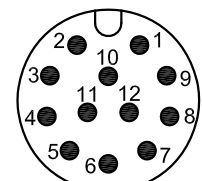
REVISION RECORD

REV	ECN	DESCRIPTION	DRFT	DATE
-----	-----	-------------	------	------

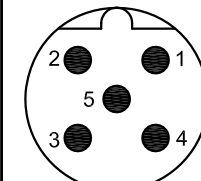
10pin A Coding 12pin A Coding 5pin B Coding 4pin D Coding



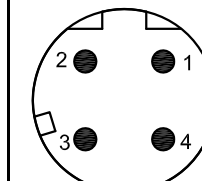
Pin Assignments Front View



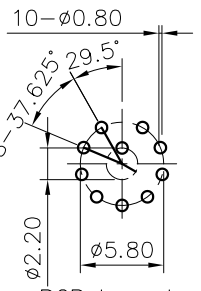
Pin Assignments Front View



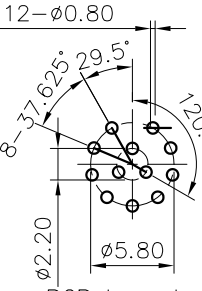
Pin Assignments Front View



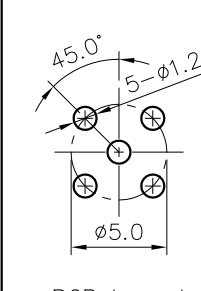
Pin Assignments Front View



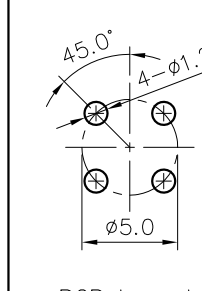
PCB Layout



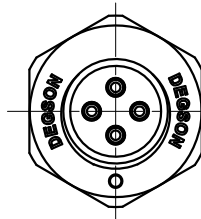
PCB Layout



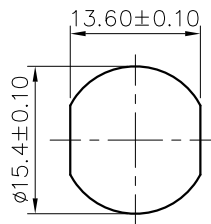
PCB Layout



PCB Layout

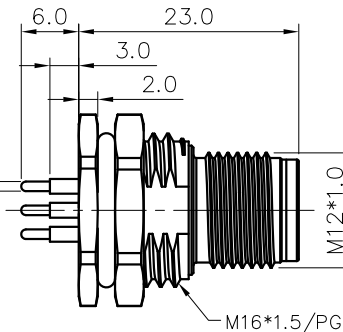


Thread specification:
PG9

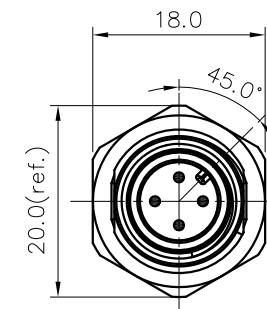


Panel Mounted

3~5pin: $\phi 1.0$
6,8pin: $\phi 0.8$
10,12pin: $\phi 0.6$



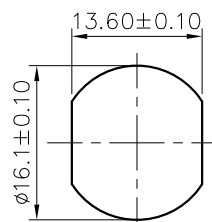
M16*1.5/PG9



NOTES:

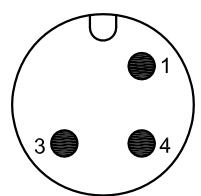
- Rated voltage/current : 3pin A: 250V / 4A
4pin A: 250V / 4A
5pin A: 60V / 4A
6pin A: 30V / 2A
8pin A: 30V / 2A
10pin A: 30V / 1.5A
12pin A: 30V / 1.5A
5pin B: 60V / 4A
4pin D: 250V / 4A
- Withstanding voltage : AC1060V/1Min
- Levels of protection: IP68
- Wire connection mode: soldering(PCB)
- Operating temperature: $-40^{\circ}\text{C} \sim +85^{\circ}\text{C}$
- For Panel Thickness Max: 4.5mm
- RoHS Compliance

Thread specification:
M16*1.5

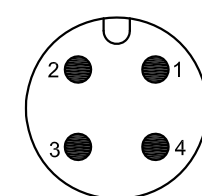


Panel Mounted

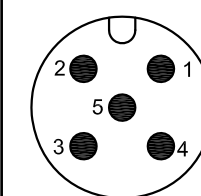
3pin A Coding 4pin A Coding 5pin A Coding 6pin A Coding 8pin A Coding



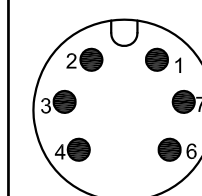
Pin Assignments Front View



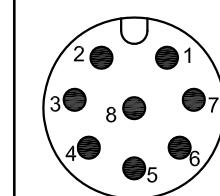
Pin Assignments Front View



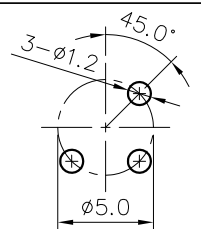
Pin Assignments Front View



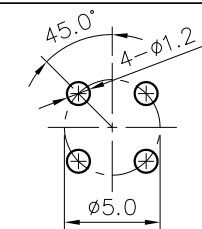
Pin Assignments Front View



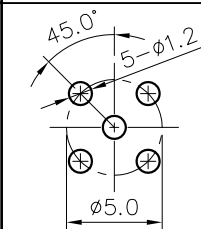
Pin Assignments Front View



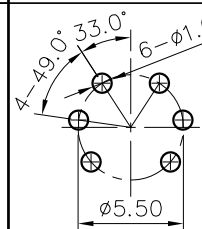
PCB Layout



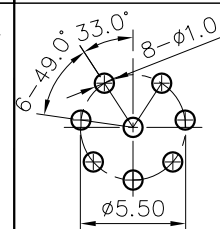
PCB Layout



PCB Layout



PCB Layout



PCB Layout

DETACHED LISTS	PART NO.: SPM12XXXPMMSF800X00AH	宁波高松电子有限公司 NINGBO DEGSON ELECTRICAL CO., LTD		
	APPD:	NAME: SP-M12X-XXP-MM-SF800X-00A(H)		
	CHKD:	TITLE: CUSTOMER DRAWING		
	DRFT: LZ 2018.10.10	REV: D0-1	SHEET: 1/1	SCALE: 1:1
		DRAWING NO.: XXXXXXXX-XX-CXX	DO NOT SCALE DRAWING	