

GQ

NEW P1~8

ONPOW

金属信号灯
METAL SIGNAL LAMP

6, 8, 10, 12, 14mm
16, 19, 22, 25mm



黄铜镀镍
NICKEL-PLATED BRASS



不锈钢
STAINLESS STEEL



黄铜镀黑
BRASS(BLACK)

GQ Series anti-vandal waterproof metal indicator

Characteristic

GQ series indicator is a new series of anti-vandal indicator. Comparing with the normal one, this has different kinds of diameter, and they are easier to mount and look beautiful.

The style is novelty with variety of indicator. First, the front shape can be flat round and domed; Second, the crust material can be nickel-plated brass, black-plated brass and stainless steel; Third, the terminal can also be pin terminal and screw terminal. GQ indicator is applied to small appliance, measuring apparatus, medical facility, vehicle and so on.

Part-number Description

GQ	★	■	-	D	/	◆	/	△	/	▲	/	◎
Code of series	Mounting hole	The front shape	Lamp type	Connect type	Lamp color	Lamp voltage	Crust material					
	6 Φ6mm	G Domed	D Dot	L Screw terminal	R Red	AC/DC 6V	N Nickel-plated brass					
	8 Φ8mm	T Flat round 1		No letter means screw terminal	G Green	AC/DC 12V	S Stainless steel					
	10 Φ10mm	F Flat round 2			Y Yellow	AC/DC 24V	A Black-plated brass					
	12 Φ12mm				O Orange	AC/DC 110V						
	14 Φ14mm				B Blue	AC/DC 220V						
	16 Φ16mm				W White							
	19 Φ19mm				N Black							
	22 Φ22mm											
	25 Φ25mm											

Note: Please read the catalogue carefully, and choose the right part-number according to the sign.

Lamp Ratings

Lamp Type	LED lamp(AC/DC)
Lamp color	R G Y O B W
Life	40000 hours(Reference)
Rated Voltage	AC/DC6V, AC/DC12V, AC/DC110V, AC/DC24V, AC/DC36V, AC/DC220V
Rated Current	2~15mA
Dropping Way	Inner resistance
Lamp	Using AC/DC LED lamp, the terminals have no difference
Circuit	of anode and cathode: Using inner resistance,
Diagram	do not need connect outer resistance

Note: DC LED and other voltage can be made to order.

Standard

Standard	EN61547-2000
	JB/T 8975-2006

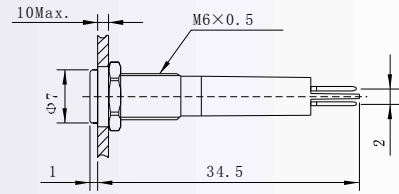
Specifications

Operating Temperature	-25°C~+55°C keep the air flowing around indicator
Operating Humidity	45~85%RH(no condensation)
Insulation Resistance	≥1000MΩ
Dielectric Strength	2000V, A C50Hz, 5 seconds
Vibration Resistance	50Hz, Amplitude 1.2mm
Shock Resistance	>10g
Solder Heat Resistance	320°C(or 30W soldering iron) no more than 2 seconds)



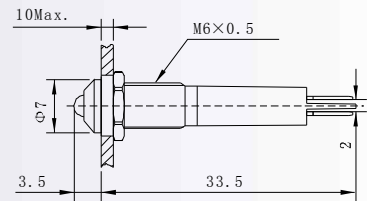
Nickel-plated brass
GQ6T-D/Δ/▲/N

Black-plated brass
GQ6T-D/Δ/▲/A



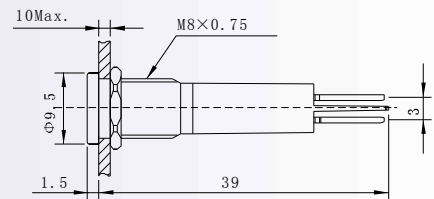
Nickel-plated brass
GQ6G-D/Δ/▲/N

Black-plated brass
GQ6G-D/Δ/▲/A



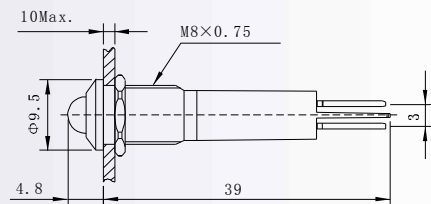
Nickel-plated brass
GQ8T-D/Δ/▲/N

Black-plated brass
GQ8T-D/Δ/▲/A



Nickel-plated brass
GQ8G-D/Δ/▲/N

Black-plated brass
GQ8G-D/Δ/▲/A



- ⊙ Lamo color (Δ) : R G Y O B W
 - ⊙ Lamp voltage (▲) : 6V,12V,24V,110V,220V;
 - ⊙ Mounting hole: Φ6mm
 - ⊙ Lamp type: LED
 - ⊙ Rated Current: 2mA ~ 20mA
 - ⊙ Torque: About 0.1Nm
 - ⊙ Panel Thickness: 1~6mm
 - ⊙ Operating Temperature: -25°C~+55°C
 - ⊙ Terminal Type: Pin terminal (2.8×0.5mm)
 - ⊙ Solder Heat Resistance: 320°C(or 30W soldering iron) no more than 2 seconds)
 - ⊙ Crust material: Nickel-plated brass/Black-plated brass
 - ⊙ Lamp cover material: Epoxy (Anti-UV can be made to order)
 - ⊙ Base material: PA
 - ⊙ IP degree: IP67,IK10
 - ⊙ RoHS

**GQ6 Indicator
Specification**

- ⊙ Lamo color (Δ) : R G Y O B W
 - ⊙ Lamp voltage (▲) : 6V,12V,24V,110V,220V;
 - ⊙ Mounting hole: Φ8mm
 - ⊙ Lamp type: LED
 - ⊙ Rated Current: 2mA ~ 20mA
 - ⊙ Torque: About 0.2Nm
 - ⊙ Panel Thickness: 1~6mm
 - ⊙ Operating Temperature: -25°C~+55°C
 - ⊙ Terminal Type: Pin terminal (2.8×0.8mm)
 - ⊙ Solder Heat Resistance: 320°C(or 30W soldering iron) no more than 2 seconds)
 - ⊙ Crust material: Nickel-plated brass/Black-plated brass
 - ⊙ Lamp cover material: Epoxy (Anti-UV can be made to order)
 - ⊙ Base material: PA
 - ⊙ IP degree: IP67,IK10
 - ⊙ RoHS

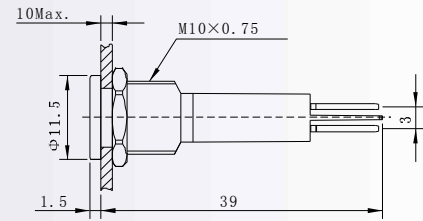
**GQ8 Indicator
Specification**



Nickel-plated brass
GQ10T-D/Δ/▲/N



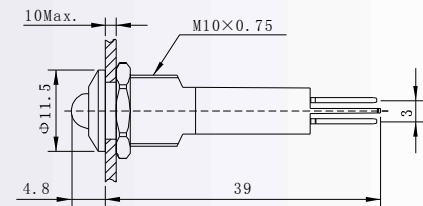
Black-plated brass
GQ10T-D/Δ/▲/A



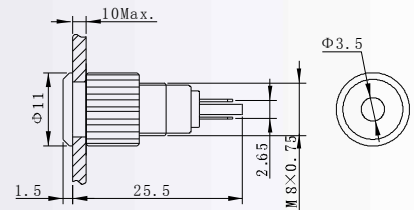
Nickel-plated brass
GQ10G-D/Δ/▲/N



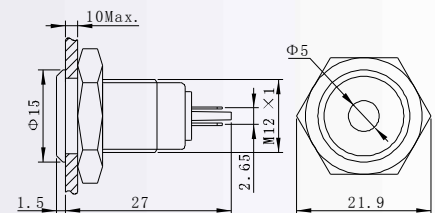
Black-plated brass
GQ10G-D/Δ/▲/A



Nickel-plated brass
GQ8F-D/Δ/▲/N



Nickel-plated brass
GQ12F-D/Δ/▲/N



- GQ10 Indicator Specification**
- ⊙ Lamp color (Δ) : **R G Y O B W**
 - ⊙ Lamp voltage (▲) : 6V, 12V, 24V, 110V, 220V;
 - ⊙ Mounting hole: φ10mm
 - ⊙ Lamp type: LED
 - ⊙ Rated Current: 2mA ~ 20mA
 - ⊙ Torque: About 0.3Nm
 - ⊙ Panel Thickness: 1 ~ 6mm
 - ⊙ Operating Temperature: -25°C ~ + 55°C
 - ⊙ Terminal Type: Pin terminal (2.8×0.5mm)
 - ⊙ Solder Heat Resistance: 320°C(or 30W soldering iron) no more than 2 seconds)
 - ⊙ Crust material: Nickel-plated brass/Black-plated brass
 - ⊙ Lamp cover material: Epoxy (Anti-UV can be made to order)
 - ⊙ Base material: PA
 - ⊙ IP degree: IP67, IK10
 - ⊙ **RoHS**

- GQ8, GQ12 Indicator Specification**
- ⊙ Lamp color (Δ) : **R G Y O B W**
 - ⊙ Lamp voltage (▲) : 6V, 12V, 24V, 110V, 220V;
 - ⊙ Mounting hole: φ8, 12mm
 - ⊙ Lamp type: LED
 - ⊙ Rated Current: 2mA ~ 20mA
 - ⊙ Torque: About 0.3Nm
 - ⊙ Panel Thickness: 1 ~ 10mm
 - ⊙ Operating Temperature: -25°C ~ + 55°C
 - ⊙ Terminal Type: Pin terminal (1.8×0.4mm)
 - ⊙ Solder Heat Resistance: 320°C(or 30W soldering iron) no more than 2 seconds)
 - ⊙ Crust material: Nickel-plated brass/Black-plated brass
 - ⊙ Lamp cover material: Epoxy (Anti-UV can be made to order)
 - ⊙ Base material: PA
 - ⊙ IP degree: IP67, IK10
 - ⊙ **RoHS**



Nickel-plated brass
GQ12T-D/△/▲/N

Stainless Steel
GQ12T-D/△/▲/S

Black-plated brass
GQ12T-D/△/▲/A



Nickel-plated brass
GQ12G-D/△/▲/N

Stainless Steel
GQ12G-D/△/▲/S

Black-plated brass
GQ12G-D/△/▲/A



Nickel-plated brass
GQ14T-D/△/▲/N

Stainless Steel
GQ14T-D/△/▲/S

Black-plated brass
GQ14T-D/△/▲/A



Nickel-plated brass
GQ14G-D/△/▲/N

Stainless Steel
GQ14G-D/△/▲/S

Black-plated brass
GQ14G-D/△/▲/A

- ⊙ Lamo color (△) : **R G Y O B W**
- ⊙ Lamp voltage (▲) : 6V, 12V, 24V, 110V, 220V;
- ⊙ Mounting hole: Φ12mm
- ⊙ Lamp type: LED
- ⊙ Rated Current: 2mA ~ 20mA
- ⊙ Torque: About 0.3Nm
- ⊙ Panel Thickness: 1 ~ 6mm
- ⊙ Operating Temperature: -25°C ~ + 55°C
- ⊙ Terminal Type: Pin terminal (2.8×0.5mm)
- ⊙ Solder Heat Resistance: 320°C(or 30W soldering iron) no more than 2 seconds)
- ⊙ Crust material: Nickel-plated brass/Black-plated brass
- ⊙ Lamp cover material: Epoxy (Anti-UV can be made to order)
- ⊙ Base material: PA
- ⊙ IP degree: IP67, IK10
- ⊙ **RoHS**

**GQ12 Indicator
Specification**

- ⊙ Lamo color (△) : **R G Y O B W**
- ⊙ Lamp voltage (▲) : 6V, 12V, 24V, 110V, 220V;
- ⊙ Mounting hole: Φ14mm
- ⊙ Lamp type: LED
- ⊙ Rated Current: 2mA ~ 20mA
- ⊙ Torque: About 0.4Nm
- ⊙ Panel Thickness: 1 ~ 6mm
- ⊙ Operating Temperature: -25°C ~ + 55°C
- ⊙ Terminal Type: Pin terminal (2.8×0.8mm)
- ⊙ Solder Heat Resistance: 320°C(or 30W soldering iron) no more than 2 seconds)
- ⊙ Crust material: Nickel-plated brass/Black-plated brass
- ⊙ Lamp cover material: Epoxy (Anti-UV can be made to order)
- ⊙ Base material: PA
- ⊙ IP degree: IP67, IK10
- ⊙ **RoHS**

**GQ14 Indicator
Specification**



- ⊙ Lamo color (Δ) : **R G Y O B W**
- ⊙ Lamp voltage (▲) : 6V, 12V, 24V, 110V, 220V;
- ⊙ Mounting hole: Φ16mm
- ⊙ Lamp type: LED
- ⊙ Rated Current: 2mA ~ 20mA
- ⊙ Torque: About 0.6Nm
- ⊙ Panel Thickness: 1 ~ 10mm
- ⊙ Operating Temperature: -25°C ~ + 55°C
- ⊙ Terminal Type: Pin terminal (2.8×0.8mm)
- ⊙ Solder Heat Resistance: 320°C(or 30W soldering iron) no more than 2 seconds)
- ⊙ Crust material: Nickel-plated brass/Black-plated brass
- ⊙ Lamp cover material: Epoxy (Anti-UV can be made to order)
- ⊙ Base material: PA
- ⊙ IP degree: IP67, IK10
- ⊙ **RoHS**

**GQ16 Indicator
Specification**



Nickel-plated brass
GQ19T-D/Δ/▲/N

Stainless steel
GQ19T-D/Δ/▲/S

Black-plated brass
GQ19T-D/Δ/▲/A



Nickel-plated brass
GQ19G-D/Δ/▲/N

Stainless steel
GQ19G-D/Δ/▲/S

Black-plated brass
GQ19G-D/Δ/▲/A



Nickel-plated brass
GQ19T-D/L/Δ/▲/N

Stainless steel
GQ19T-D/L/Δ/▲/S

Black-plated brass
GQ19T-D/L/Δ/▲/A



Nickel-plated brass
GQ19G-D/L/Δ/▲/N

Stainless steel
GQ19G-D/L/Δ/▲/S

Black-plated brass
GQ19G-D/L/Δ/▲/A

- ◎ Lamo color (Δ) : R G Y O B W
- ◎ Lamp voltage (▲) : 6V, 12V, 24V, 110V, 220V;
- ◎ Mounting hole: Φ 19mm
- ◎ Lamp type: LED
- ◎ Rated Current: 2mA ~ 20mA
- ◎ Torque: About 0.8Nm
- ◎ Panel Thickness: 1 ~ 10mm
- ◎ Operating Temperature: $-25^{\circ}\text{C} \sim +55^{\circ}\text{C}$
- ◎ Terminal Type: Pin terminal (2.8x0.8mm)
- ◎ Solder Heat Resistance: 320°C (or 30W soldering iron) no more than 2 seconds)
- ◎ Crust material: Nickel-plated brass/Black-plated brass
- ◎ Lamp cover material: Epoxy (Anti-UV can be made to order)
- ◎ Base material: PA
- ◎ IP degree: IP67, IK10
- ◎ RoHS

**GQ19 Indicator
Specification**



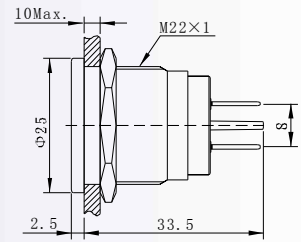
Nickel-plated brass
GQ22T-D/Δ/▲/N



Stainless steel
GQ22T-D/Δ/▲/S



Black-plated brass
GQ22T-D/Δ/▲/A



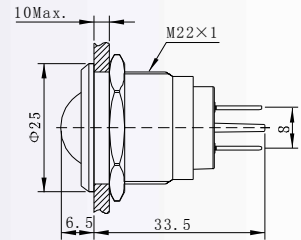
Nickel-plated brass
GQ22G-D/Δ/▲/N



Stainless steel
GQ22G-D/Δ/▲/S



Black-plated brass
GQ22G-D/Δ/▲/A



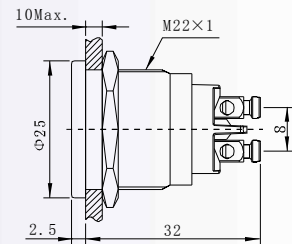
Nickel-plated brass
GQ22T-D/L/Δ/▲/N



Stainless steel
GQ22T-D/L/Δ/▲/S



Black-plated brass
GQ22T-D/L/Δ/▲/A



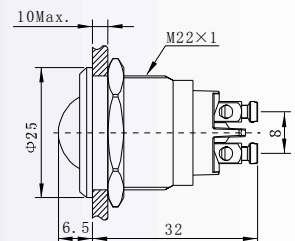
Nickel-plated brass
GQ22G-D/L/Δ/▲/N



Stainless steel
GQ22G-D/L/Δ/▲/S



Black-plated brass
GQ22G-D/L/Δ/▲/A



- ⊙ Lamp color (Δ) : **R G Y O B W**
- ⊙ Lamp voltage (▲) : 6V,12V,24V,110V,220V;
- ⊙ Mounting hole: Φ22mm
- ⊙ Lamp type: LED
- ⊙ Rated Current: 2mA ~ 20mA
- ⊙ Torque: About 1.2Nm
- ⊙ Panel Thickness: 1 ~ 10mm
- ⊙ Operating Temperature: -25°C ~ + 55°C
- ⊙ Terminal Type: Pin terminal (2.8×0.8mm)
- ⊙ Solder Heat Resistance: 320°C(or 30W soldering iron) no more than 2 seconds)
- ⊙ Crust material: Nickel-plated brass/Black-plated brass
- ⊙ Lamp cover material: Epoxy (Anti-UV can be made to order)
- ⊙ Base material: PA
- ⊙ IP degree: IP67,IK10
- ⊙ **RoHS** Made to order

**GQ22 Indicator
Specification**



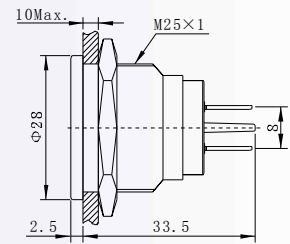
Nickel-plated brass
GQ25T-D/Δ/▲/N



Stainless steel
GQ25T-D/Δ/▲/S



Black-plated brass
GQ25T-D/Δ/▲/A



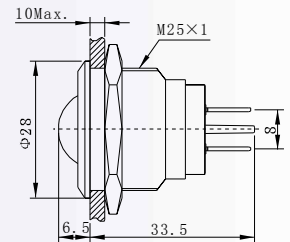
Nickel-plated brass
GQ25G-D/Δ/▲/N



Stainless steel
GQ25G-D/Δ/▲/S



Black-plated brass
GQ25G-D/Δ/▲/A



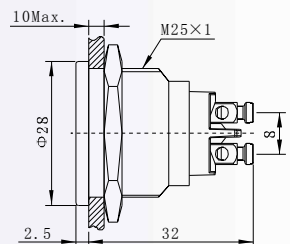
Nickel-plated brass
GQ25T-D/L/Δ/▲/N



Stainless steel
GQ25T-D/L/Δ/▲/S



Black-plated brass
GQ25T-D/L/Δ/▲/A



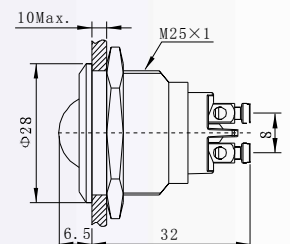
Nickel-plated brass
GQ25G-D/L/Δ/▲/N



Stainless steel
GQ25G-D/L/Δ/▲/S



Black-plated brass
GQ25G-D/L/Δ/▲/A



- ⊙ Lamp color (Δ) : **R G Y O B W**
- ⊙ Lamp voltage (▲) : 6V, 12V, 24V, 110V, 220V;
- ⊙ Mounting hole: Φ25mm
- ⊙ Lamp type: LED
- ⊙ Rated Current: 2mA ~ 20mA
- ⊙ Torque: About 1.2Nm
- ⊙ Panel Thickness: 1 ~ 10mm
- ⊙ Operating Temperature: -25°C ~ + 55°C
- ⊙ Terminal Type: Pin terminal (2.8×0.8mm)
- ⊙ Solder Heat Resistance: 320°C(or 30W soldering iron) no more than 2 seconds)
- ⊙ Crust material: Nickel-plated brass/Black-plated brass
- ⊙ Lamp cover material: Epoxy (Anti-UV can be made to order)
- ⊙ Base material: PA
- ⊙ IP degree: IP67, IK10
- ⊙ **RoHS** Made to order

**GQ25 Indicator
Specification**