

KLS ELECTRONIC CO; LTD

SPECIFICATION

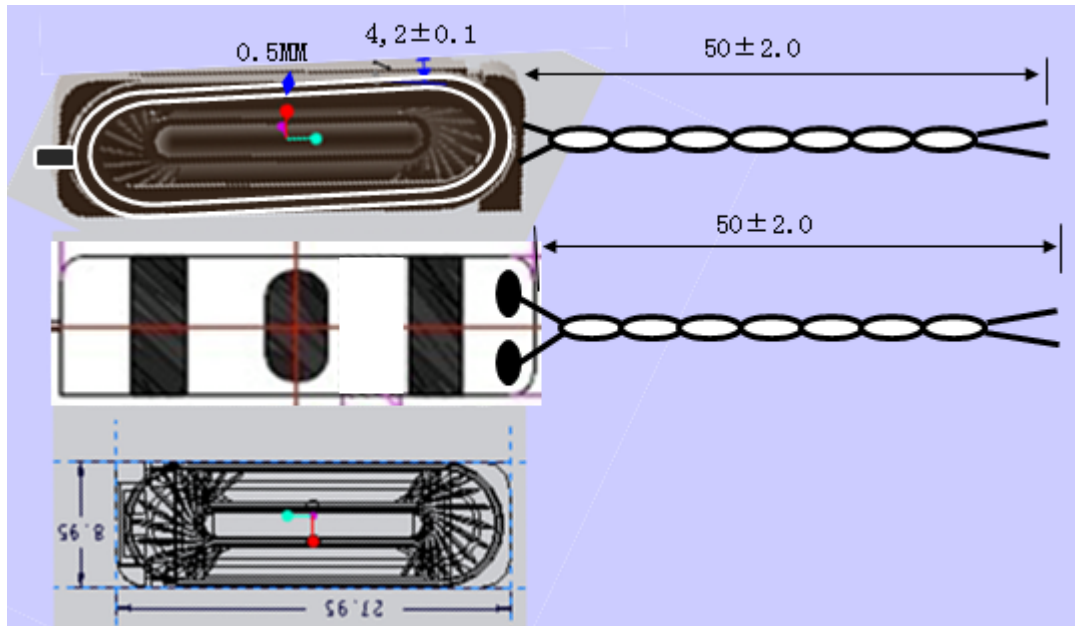
Above Measuring condition under temperature : 25~35°C R.H. 25 ~75%. According to standard GB/T9396-1996			
	Model	L-KLS3-YS-28009-R8W1.0-L60	
1	Type	Dynamic Speaker	
2	Dimension	Outline Dimension Shall Be As Shown In Fig(1).	
3	Weight	Approx 2.0 Grams.	
4	Magnet	Material	Nd-Fe-B
5	Impedance	8 ± 15% Ohm at 1500Hz. 1V	
6	Power Rating	Normal	1.0W Maximum 1.2W
7	FO	900±20% Hz at 1V	
8	S.P.L.	89±3dB/1.0Watt 0.1Meter. Average At1000,1200,1500,2000 Hz.	
		Measurement Method Shown In Fig(2).	
9	Frequency Range	550~20,000Hz.Average SPL-10dB. Frequency Response Fig (3).	
10	Distortion	10% Maximum At 1500Hz.1.0W.	
11	Abnormal Sound Test	Must be Normal Tested by 2.68 Volts. Sine wave for50~5kHz	
12	Polarity	Diaphragm Shall Move Forward When Apply a Positive DC.	
		Red "+" or" Marked" Terminal	
13	Operating Temperature	-20 °C to +65 °C	
14	Storage Temperature	-25 °C to +65 °C	
15	Reliable Test		
After any following test leave speakers at room temperature for 1 hour, SPL shall not deviate by 3 db from initial value			
15-1	Load Test	white noise for 96 hours at 1.0 W input power.	
15-2	High Temperature Test	+65±2 °C 96hours	
15-3	Low Temperature Test	-25±2 °C 96hours	
15-4	Humidity Test	+40±2 °C relative humidity 90~95%R.H 96hours	
15-5	Vibration Test	Frequency 30 15 Hz, Amplitude 1.5 mm for 2 Hours per axis(x. y. z axis)	
15-6	Drop Test	75 CM free falling on Concrete floor, 10 times.	
15-7	Temperature Cycle test	- 25~ + 65 °C 5 Cycles Temperature test.	
DATE		SPEC.NO	Version
January 18.2015			A0
			Page
			2/6

KLS ELECTRONIC CO; LTD

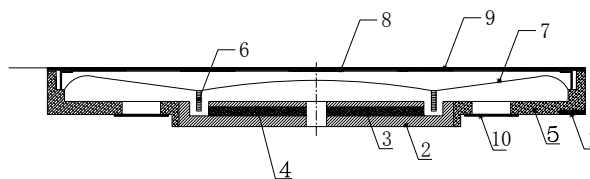
SPECIFICATION

Model : L-KLS3-YS-28009-R8W1.0-L60

16: Drawing(Fig1) Unit: mm Tolerance:±0.3mm



17. Speaker Construction



NO	PART NAME	MATERIAL	Q'TY
1	TERMINAL	FR-4	1
2	YOKE	SPCC	1
3	MAGNET	Nd-Fe-B	1
4	WASHER	SPCC	1
5	FRAME	PBT	1
6	VOICE COIL	DIA11.0×3.9	1
7	DIAPHRAGM	PEN	1
8	COVER	SPCC	1
9	EVA	EVA	1
10	CLOTH	CLOTH	2

DATE

SPEC.NO

Version

Page

KLS ELECTRONIC CO; LTD

SPECIFICATION

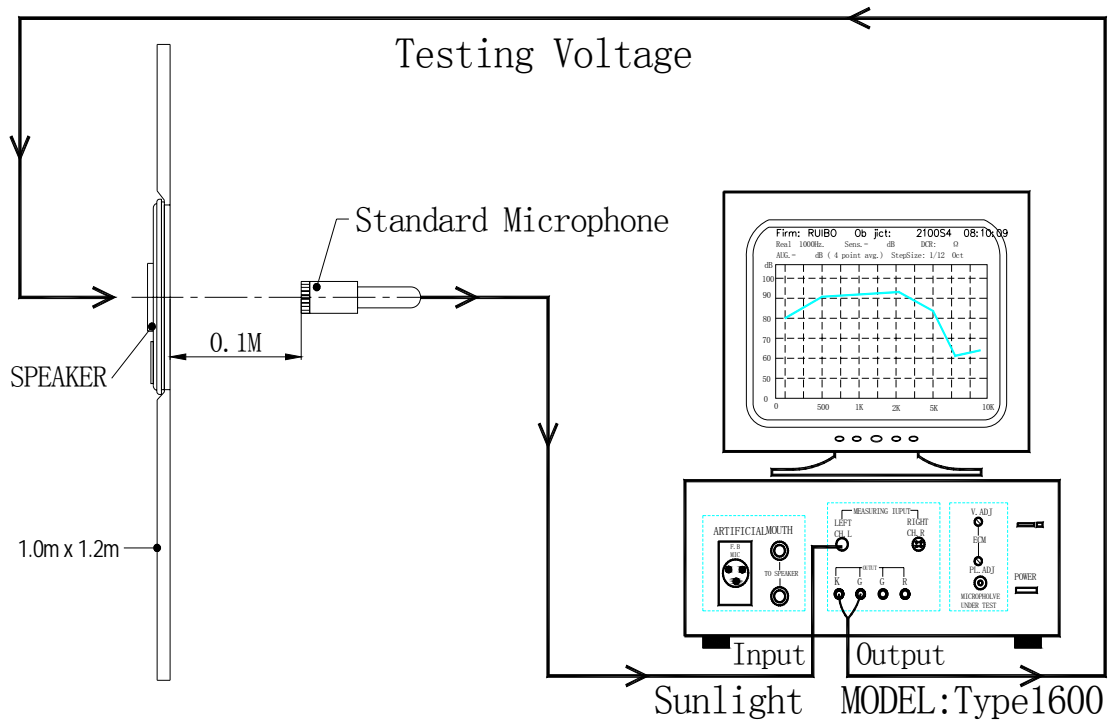
January 18.2015

L-KLS3-YS-28009-R8W1.0-L60

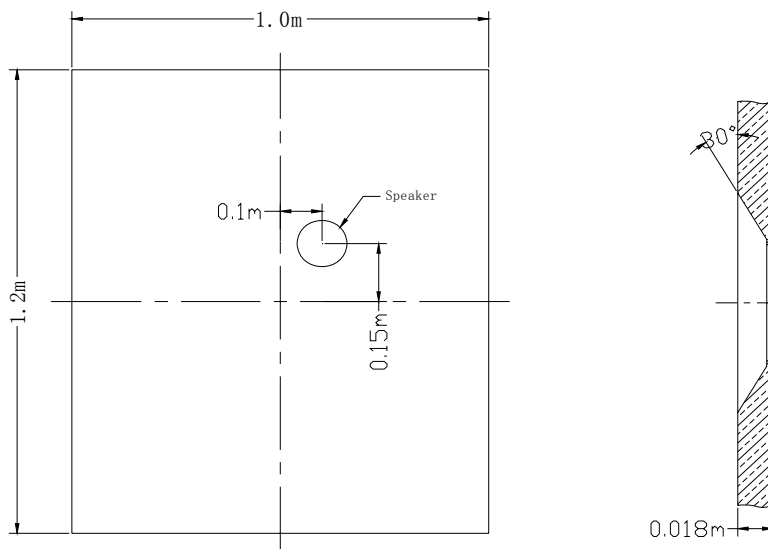
A0

3/6

18.Measurement Method Fig(2).



19. Test baffle Diagram



KLS ELECTRONIC CO; LTD

SPECIFICATION

DATE	SPEC.NO	Version	Page
January 18.2015	L-KLS3-YS-28009-R8W1.0-L60	A0	4/6

20.Frequency Resonance Fig (3).



21. 备注

此规格书仅供参考，请务必以实物为准。

声明：

由于本司技术限制及工艺制程持续优化，规格书存在一定误差，所以此款产品规格书不作为最终评判标准。不同客户不同产品，对同一款物料评判标准和生产需求各有差异，请贵司严格测试我司提供的样品，具体试产订单和量产订单按照我司实际提供样板为主。

未经允许，严禁非法转载使用，如给我司造成的损失将承担一切法律责任！

DATE	SPEC.NO	Version	Page
------	---------	---------	------