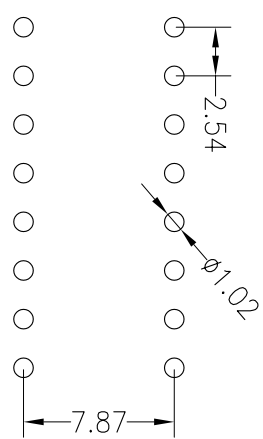
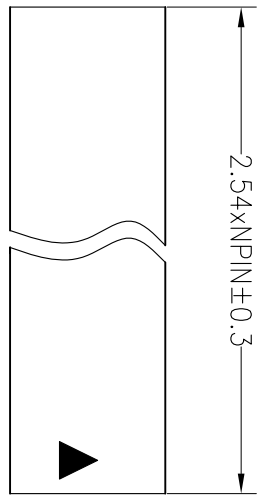




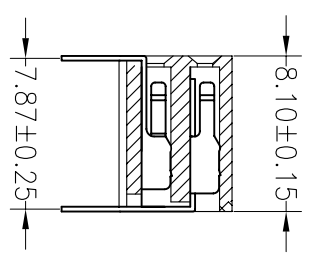
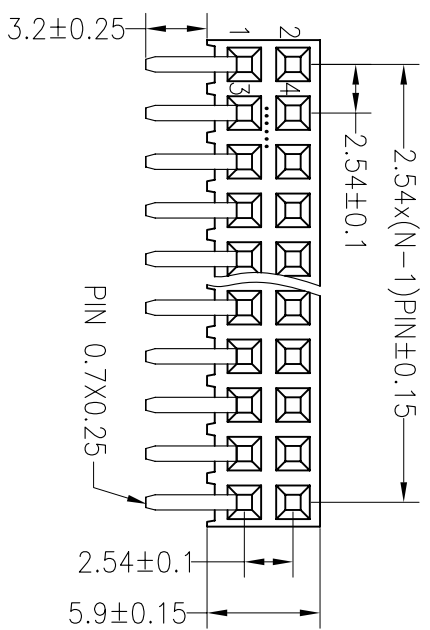
SPECIFICATIONS

Rated Current:3.0AMP
 Contact Resistance:20mΩ Max
 Withstand Voltage:1000V AC/DC
 Insulation Resistance:1000MΩ Min
 Operation Temperature:-40°c to +105°c

Contact Material:Brass
 Contact Plating:Au or Sn Over Ni
 Insulator Material:Polyester(UL94V-0)
 Standard: PBT
 Max.Processing Temp: 180°C for 30-60 seconds
 (200°C for 10 seconds)



Recommended P.C.B Layout(Top Side)
 (PCB BOARD TOLERANCE±0.05)



OPERATION	DRAW	BEN	SCALE	FIT	NINGBO KLS ELECTRONIC CO.,LTD.	
X.X	±0.30	12.04.18	UNIT	mm		NINGBO KLS ELECTRONIC CO.,LTD.
X.XX	±0.20		SIZE	A4		
X.XXX	±0.10	CHECK	SHEET	1/1	PART NO.	L-KLS1-208A-5.9-2-08-R
Angle	±3°	APPROVE	PROJ.		TITLE:	2.54PF H8.1*W5.9mm 2xNpin 90° Side Entry
DIM	TOL					

REV	DATE	MODIFICATION DESCRIPTION	CHANGE
A0	2012.04.18	NEW DRAWING	