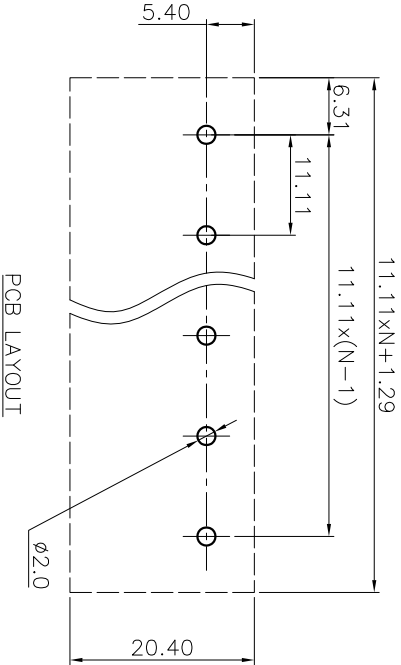
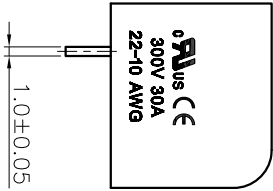
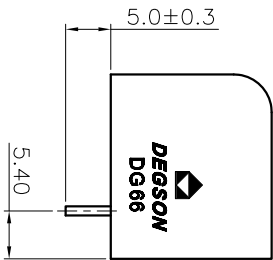
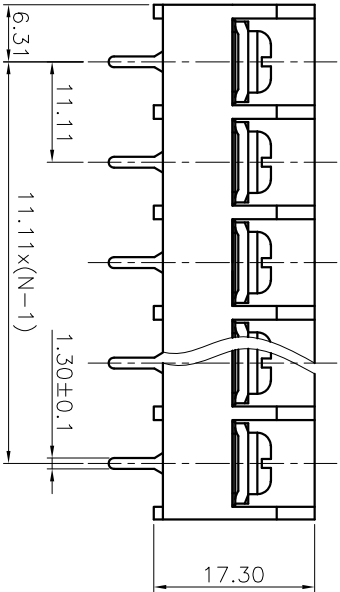
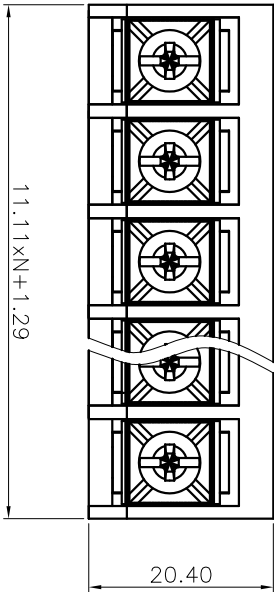


| REVISION RECORD | | | |
|-----------------|-----|-------------|-----------|
| REV | ECN | DESCRIPTION | DRFT DATE |
| | | | |



NOTES1:

UL Standard

1.Rated voltage/current : 300V / 30A

2.Torque value : M4 , 10.53lbf.in

3.Wire range : 22~10AWG

NOTES2:

1.Dimension shall be interpreted per

ASME Y14.5-2009

2.Pitch : 11.11mm, Poles : N=02~26P

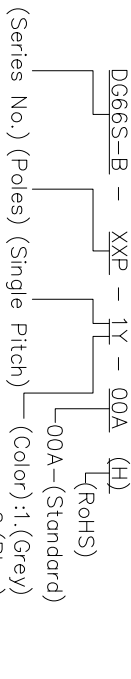
3.Withstanding voltage : AC1600V/1Min

4.Operating temperature: -40°C~+105°C

5.Undimensioned tolerances:

| Pitch Range | mm | In mm | Nominal Dimension | Range | Over | Under |
|-------------|----|-------|-------------------|-------|------|-------|
| 6 | 10 | TO | 30 | 60 | 100 | 150 |
| 10 | 24 | TO | 30 | 60 | 100 | 150 |
| 15 | 30 | TO | 50 | 70 | 100 | 150 |
| 20 | 30 | TO | 50 | 70 | 100 | 150 |
| 25 | 30 | TO | 50 | 70 | 100 | 150 |
| 30 | 30 | TO | 50 | 70 | 100 | 150 |
| 40 | 30 | TO | 50 | 70 | 100 | 150 |
| 50 | 30 | TO | 50 | 70 | 100 | 150 |
| 60 | 30 | TO | 50 | 70 | 100 | 150 |
| 70 | 30 | TO | 50 | 70 | 100 | 150 |
| 80 | 30 | TO | 50 | 70 | 100 | 150 |
| 90 | 30 | TO | 50 | 70 | 100 | 150 |
| 100 | 30 | TO | 50 | 70 | 100 | 150 |
| 125 | 30 | TO | 50 | 70 | 100 | 150 |
| 150 | 30 | TO | 50 | 70 | 100 | 150 |
| 175 | 30 | TO | 50 | 70 | 100 | 150 |
| 200 | 30 | TO | 50 | 70 | 100 | 150 |
| 250 | 30 | TO | 50 | 70 | 100 | 150 |
| 300 | 30 | TO | 50 | 70 | 100 | 150 |
| 350 | 30 | TO | 50 | 70 | 100 | 150 |
| 400 | 30 | TO | 50 | 70 | 100 | 150 |
| 450 | 30 | TO | 50 | 70 | 100 | 150 |
| 500 | 30 | TO | 50 | 70 | 100 | 150 |
| 600 | 30 | TO | 50 | 70 | 100 | 150 |
| 700 | 30 | TO | 50 | 70 | 100 | 150 |
| 800 | 30 | TO | 50 | 70 | 100 | 150 |
| 900 | 30 | TO | 50 | 70 | 100 | 150 |
| 1000 | 30 | TO | 50 | 70 | 100 | 150 |
| 1250 | 30 | TO | 50 | 70 | 100 | 150 |
| 1500 | 30 | TO | 50 | 70 | 100 | 150 |
| 1750 | 30 | TO | 50 | 70 | 100 | 150 |
| 2000 | 30 | TO | 50 | 70 | 100 | 150 |
| 2500 | 30 | TO | 50 | 70 | 100 | 150 |
| 3000 | 30 | TO | 50 | 70 | 100 | 150 |
| 3500 | 30 | TO | 50 | 70 | 100 | 150 |
| 4000 | 30 | TO | 50 | 70 | 100 | 150 |
| 4500 | 30 | TO | 50 | 70 | 100 | 150 |
| 5000 | 30 | TO | 50 | 70 | 100 | 150 |
| 6000 | 30 | TO | 50 | 70 | 100 | 150 |
| 7000 | 30 | TO | 50 | 70 | 100 | 150 |
| 8000 | 30 | TO | 50 | 70 | 100 | 150 |
| 9000 | 30 | TO | 50 | 70 | 100 | 150 |
| 10000 | 30 | TO | 50 | 70 | 100 | 150 |
| 12500 | 30 | TO | 50 | 70 | 100 | 150 |
| 15000 | 30 | TO | 50 | 70 | 100 | 150 |
| 17500 | 30 | TO | 50 | 70 | 100 | 150 |
| 20000 | 30 | TO | 50 | 70 | 100 | 150 |
| 25000 | 30 | TO | 50 | 70 | 100 | 150 |
| 30000 | 30 | TO | 50 | 70 | 100 | 150 |
| 35000 | 30 | TO | 50 | 70 | 100 | 150 |
| 40000 | 30 | TO | 50 | 70 | 100 | 150 |
| 45000 | 30 | TO | 50 | 70 | 100 | 150 |
| 50000 | 30 | TO | 50 | 70 | 100 | 150 |
| 60000 | 30 | TO | 50 | 70 | 100 | 150 |
| 70000 | 30 | TO | 50 | 70 | 100 | 150 |
| 80000 | 30 | TO | 50 | 70 | 100 | 150 |
| 90000 | 30 | TO | 50 | 70 | 100 | 150 |
| 100000 | 30 | TO | 50 | 70 | 100 | 150 |

6.RoHS Compliance



(Series No.) (Poles) (Single Pitch) (Color) :1.(Grey)

2.(Blue)

3.(Black)

4.(Green)

5.(Orange)

6.(Red)

7.(Transparent)

8.(Yellow)

9.(White)

| DETACHED LISTS | | | |
|------------------------|---|--------------|--|
| PART NO.: | / | NAME: | DEGSON ® NINGBO DEGSON ELECTRICAL CO.,LTD 宁波高松电子有限公司 |
| APPD: | / | TITLE: | CUSTOMER DRAWING |
| CHKD: | / | DRAWING NO.: | / |
| DRFT: | / | REV | DO |
| THIRD ANGLE PROJECTION | | SHEET | 1/1 |
| | | SCALE | 1:1 |