

NB-IoT Module

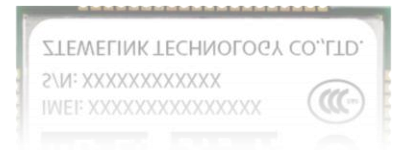
ME3612

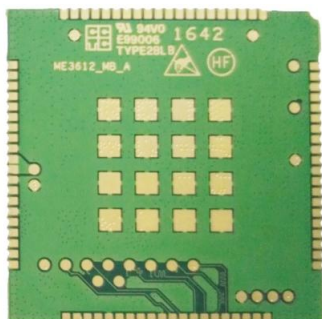
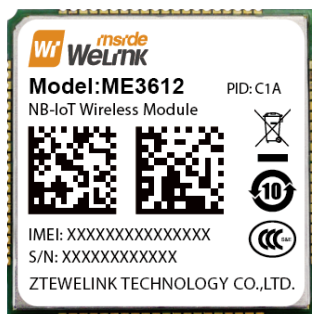
LCC Form Factor	eMTC/NB-IoT/ EGPRS	Pin-to-Pin with LCC 30*30 serial modules
USB 2.0	2 × UARTs	NB-IoT: DL 34 Kbps / UL 66Kbps
-40°C ~ 85 °C	PSM & eDRX	GNSS
Embedded TCP/UDP	Enhanced AT Commands	eSIM

M2M Application

ME3612 wireless communication module is based on the standard of NB-IoT/eMTC/EGPRS narrowband communication, and it support the global main-stream operator's NB-IoT network. In NB-IoTmode, the module can provide maximum 66 Kbps uplink rate and 34Kbps downlink rate. The module is pin -to pin with LCC 30*30 serial modules such as ME3630/ME3620/ME3610/MC8635/MW3650.

This module is designed for low rate, low power consumption, long distance, large amounts of connecting the Internet of things. It supports multiple network protocols (PPP、CoAP、TCP/UDP、OMA LWM2M、MQTT) and low power consumption (PSM, eDRX). These protocols and features can be applied to many applications in the Internet of things.





General Features

- LCC Form Factor (80 pins)
- Pin-to-Pin with LCC 30*30
- GNSS (optional)
- Dimensions: 30mm × 30mm × 2.3mm
- Weight: About 4.0g

Electrical & Sensitivity

- Transmit Power:
 - NB-IoT/eMTC: 23 ± 2.7 dBm (Power Class 3)
 - EGPRS B5,B8: 30 ± 2 dBm (Power Class 1)
 - EGPRS B2,B3: 33 ± 2 dBm (Power Class 4)
- Power Supply :
 - 3.3V -- 4.2V(3.8V is recommended)

ME3612 Band

PID	Band
C1A	NB-IoT/eMTC: B1,B3,B5,B8
	EGPRS: B2,B5,B3,B8
E1A	Cat.M/NB-IoT: B3,B8,B20,B28
	EGPRS: B2,B5,B3,B8
U1A	Cat.M/NB-IoT: B2,B4,B12,B13,B66*
	GSM/GPRS: B2,B5

*Note: the figures in this content is just for ME3612-C1A.

Please in kind prevail

*In developing

*Support in the future

Data Features

- NB-IoT
 - Max Uplink 66 Kbps / Downlink 34 Kbps
- eMTC
 - Max Uplink 375kbps / Downlink 375kbps
- EGPRS
 - Uplink 85.6 kbps / Downlink 85.6 kbps

Interfaces

- USB 2.0 High speed
- UART1
- UART2(For debug,2-wires)
- SIM interface (1.8/3.0V)
- eSIM (optional)
- RF PAD for Primary Antenna
- Reset & Power-on

Applications

- Embedded TCP /UDP /CoAP* /MQTT*
- PAP and CHAP used for PPP connection
- OMA LWM2M *
- AT Commands according to 3GPP TS27.005, 27.007 and ZTEWLink extended AT commands

Environmental

- Operation temperature: -30° C to +75° C
 - Extreme Operating temperature: -40° C to +85° C
- Storage temperature: -40° C to +85° C
- Humidity: 5%~ 95%

Driver & Tools

- Drivers
 - Windows XP, 7
 - Linux
- Diag-log Tool
- Firmware Update Tool