

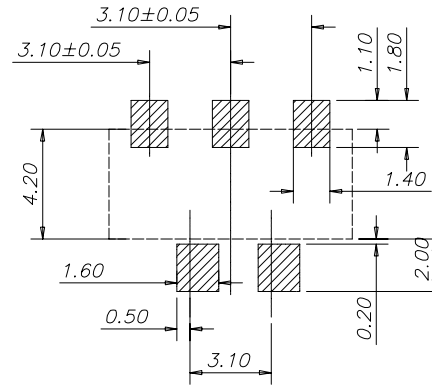
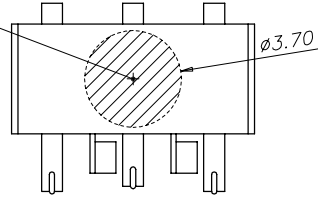
This document is the property of Amphenol Corporation and is delivered on the express condition that it is not to be disclosed, reproduced or used, in whole or in part, for manufacture or sale by anyone other than Amphenol Corporation without its prior consent, & that no right is granted to disclose or to use any information in this document.

Customer Drawing

REVISIONS

SYM	ECN	DESCRIPTION	DATE	APPROVED
A	HK3614	RELEASE TO CUSTOMER	04/20/06	IP

VACUUM PICK-UP



RECOMMENDED PCB LAYOUT

ORDER PART NUMBER

PART NUMBER	A	B	C	D
BC-7148R-03-001	7.10	4.77	5.74	1.30
BC-7350R-03-001	7.30	4.97	5.94	1.50
BC-7754R-03-001	7.70	5.37	6.34	1.90
BC-8259R-03-001	8.20	5.87	6.84	2.40

NOTES:

- MATERIAL:**
A. PIN: ALLOY COPPER
B. INSULATOR: HIGH TEMPERATURE THERMOPLASTIC UL94V-0, BLACK.
- FINISH:**
50-100 MICROINCH (1.27-2.54 MICRON) NICKEL UNDERPLATED ALL OVER,
15 MICROINCH (0.38 MICRON) GOLD PLATED AT MATING AREA, 50-100 MICROINCH (1.27-2.54 MICRON) MATTE TIN PLATED AT SOLDER TAIL
- ELECTRICAL SPECIFICATIONS:**
VOLTAGE RATING: 250 VAC MIN
CURRENT RATING: 2.0 A MIN
DIELECTRIC STRENGTH: 1000 VAC FOR 1 MINUTE MIN
INSULATION RESISTANCE: 1000 MEG OHM MIN
CONTACT RESISTANCE: 30 MILLIOHM MAX
OPERATION TEMPERATURE: -55° TO +125°
PRODUCT WITHSTANDING REFLOW SOLDERING 260° FOR 10S
- MECHANICAL SPECIFICATIONS:**
4.1 DURABILITY: 5,000 CYCLES
4.2 NORMAL FORCE AT WORKING POSITION: 80g MIN.
- PARTS TO BE PACKAGED IN ANTI-STATIC TAPE AND REEL FOR AUTOMATIC PLACEMENT. ALL PACKAGING MATERIALS TO BE APPROVED BY AMPHENOL ENGINEERING.**
- THE CAVITY# IS 0.8±0.10mm HIGH WITH 0.10±0.10mm RECESSED FROM SURFACE.**
- COPLANARITY IS 0.10MAX FOR 5 SOLDER TAIL.**
- MATERIAL SHOULD BE FULFILLED AMPHENOL SPEC# SSN002.**



UNLESS OTHERWISE SPECIFIED TOLERANCES U.S. METRIC .X +/- 0.30 .XX +/- 0.20 .XXX +/- FRACTIONS +/- ANGLES +/- 1°		APPROVAL DRAWN ly.yl CHECKED CHECKED		DATE 04/20/06	
FOR MATERIALS AND FINISHES SEE NOTES REMOVE SHARP EDGES		DRAWING FILE : DRAWING\BC\CBC-XXXXR-03-001		TITLE 3 Pin Battery Connector (VERTICAL)	
DIMENSIONS U.S. INCHES (METRIC) (MM)		ANGLE OF PROJECTION 		SIZE A3	
				DRAWING NO. C BC-XXXXR-03-001	
				REV. A	
				SCALE NONE	
				SHEET 1 OF 1	