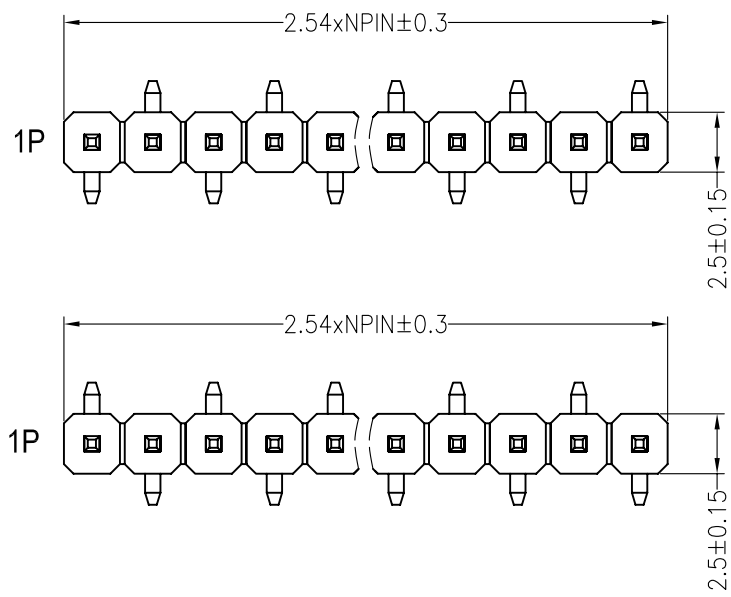
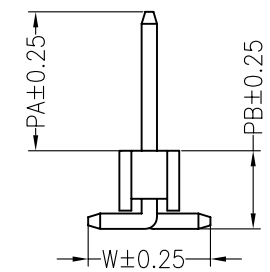
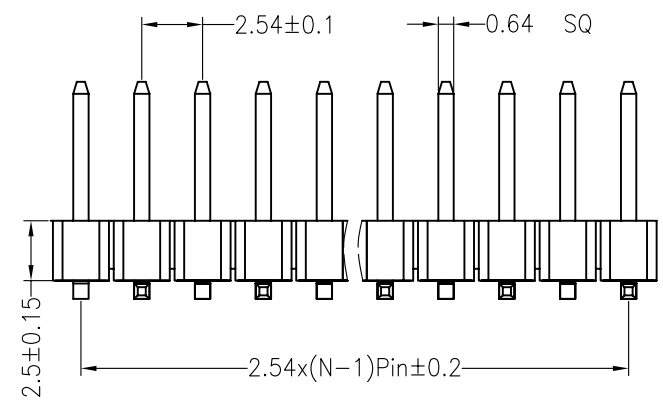
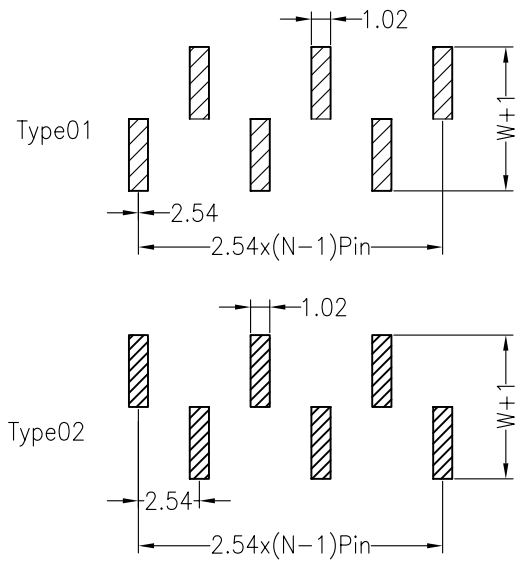


SPECIFICATIONS
 Rated Current:3.0AMP
 Contact Resistance:20mΩ Max
 Withstand Voltage:1000V AC/DC
 Insulation Resistance:1000MΩ Min
 Operation Temperature:-40°C to +105°C

Contact Material:Brass
 Contact Plating:Au Over Ni
 Insulator Material:Polyester(UL94V-0)
 Standard: PA6T
 Max.Processing Temp: 230°C for 30-60 seconds
 (260°C for 10 seconds)



Recommended P.C.B Layout(Top Side)
 (PCB BOARD TOLERANCE±0.05)



Dimension antitheses list				
ITEM	PA	PB	W	L
Standard	14.00	4.10	4.80	19.80
Alternate				

				OPERATION		DRAW	YiYuSheng	12.03.28	SCALE	FIT	KLS ELECTRONIC CO., LTD		
				X.X	±0.30				UNIT	mm			
				X.XX	±0.20	CHECK		SIZE	A4	PART NO.			L-KLS1-207-1-40-T1/T2-4.8141.6
A0	2012.03.28	NEW DRAWING		X.XXX	±0.10				SHEET	1/1			TITLE:
REV	DATE	MODIFICATION DESCRIPTION		CHANGE	ANGLE	APPROVE		PROJ.	◆				
					DIM	TOL							