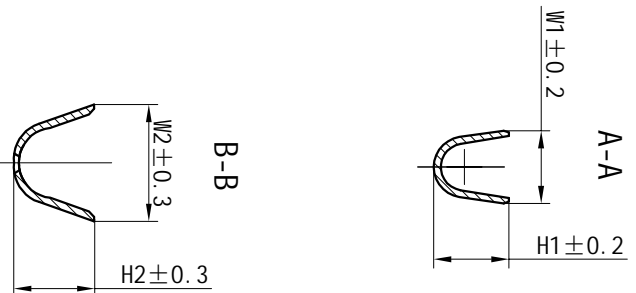
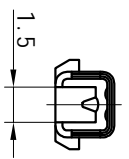
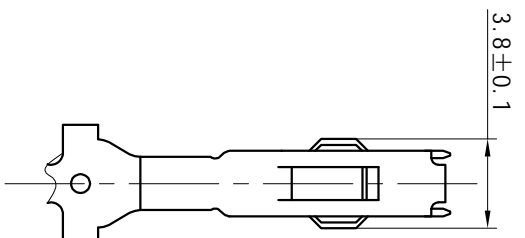
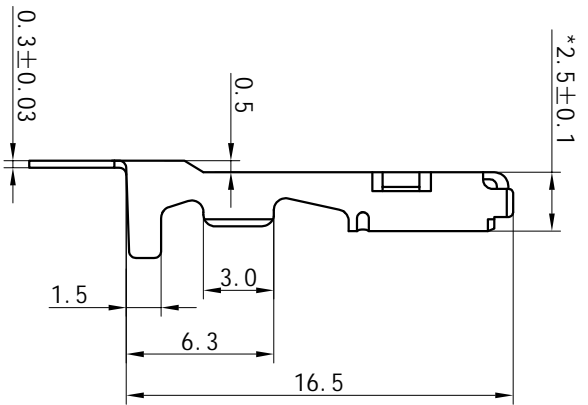
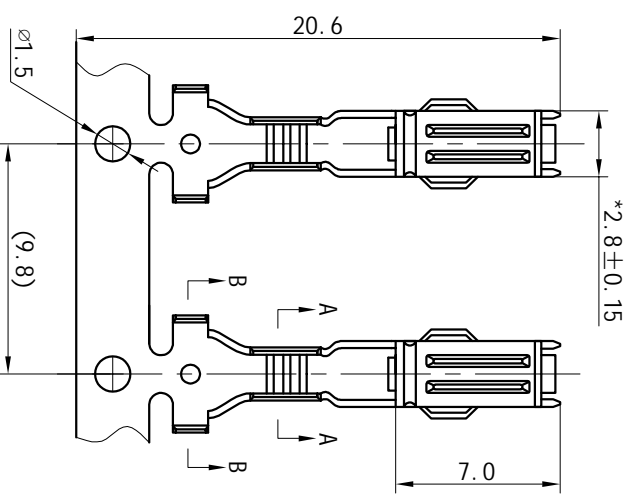


MARK	ECN	DESCRIPTION	DWN.	DATE



- Technical requirements:
1. Stamping surface are not allowed to have obvious scratch, crack, deformation, etc
 2. Clear stamping defects, chamfering, stamping feng is less than 0.02 mm
 3. No note fillet R for R0.2 to R0.5 mm
 4. Product embossing and stiffener depth of 0.08 to 0.1 mm
 5. "i" as the important features, "I" As the key features.
 5. Not note size tolerance of GB/T15055-2007 - m.

NO. TOLERANCES GB/T15055-2007-m	DIM. TOLERANCES
0.5~3	±0.20
>3~6	±0.30
>6~30	±0.40
>30~120	±0.50

NO.	PART NO.	W1	W2	H1	H2	WTRB RANGE (mm ²)
②	DJ623-1.8*0.6B	3.0	5.4	3.5	3.6	1.0-1.5
①	DJ623-1.8*0.6A	2.3	5.0	2.1	3.4	0.5-0.8

SURFACE TREATMENT	TIN-PLATED		
MATERIAL	BRASS		
NAME	TERMINAL		
PART NO.	SEE TABLE		
TYPE			
ARTICLE NO.			
MOULD NO.:			
REV. 1.0	1st-PERSON VIEW	FREE UNIT	PAGE 1/1
乐清市奥海电气有限公司 Yueqing Aohai Electric Co., Ltd.			
DRAWN BY CONFIRMED BY APPROVED BY			