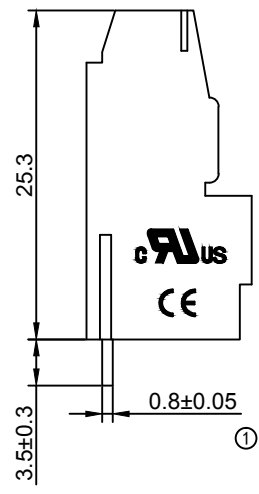
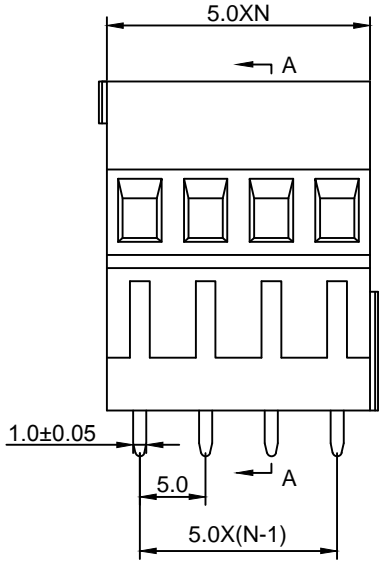
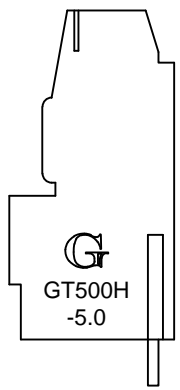


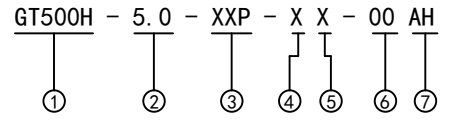
**Material :**  
 (a) Housing : PA66(UL94V-0)  
 (b) Screws : Steel , Cr<sup>3+</sup>Zn Plated  
 (c) Pin Header : Brass , Tin Plated  
 (d) Cage : Brass , Ni Plated

**Electrical :**

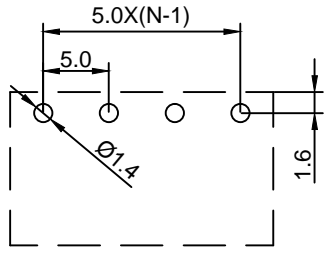
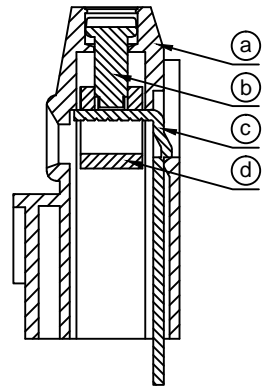
	UL	IEC
1.Rated Voltage :	300V	250V
2.Rated Current :	20A	24A
3.Torque Value :	M2.5 , 3.54Lb.in	M2.5 , 0.4N.m
4.Wire Range:	28-12AWG	2.5mm <sup>2</sup>
5.Stripping Length :	6-7mm	
6.Withstanding Voltage :	AC2000V/1Min.	
7.Operating Temperature :	-40 °C~+105 °C	
8.RoHS Compliance		
9.Safety Approval :	cULus	
10.Undimensioned Tolerances:		



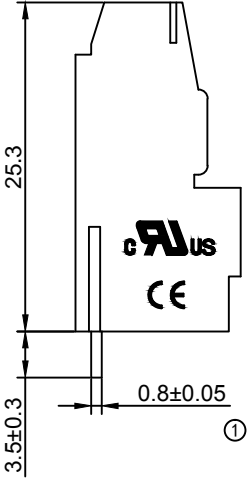
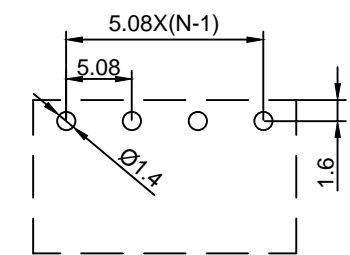
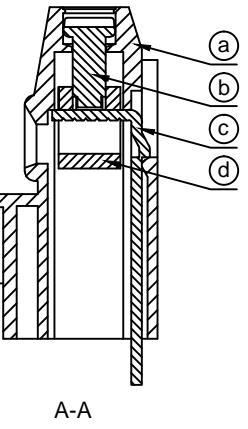
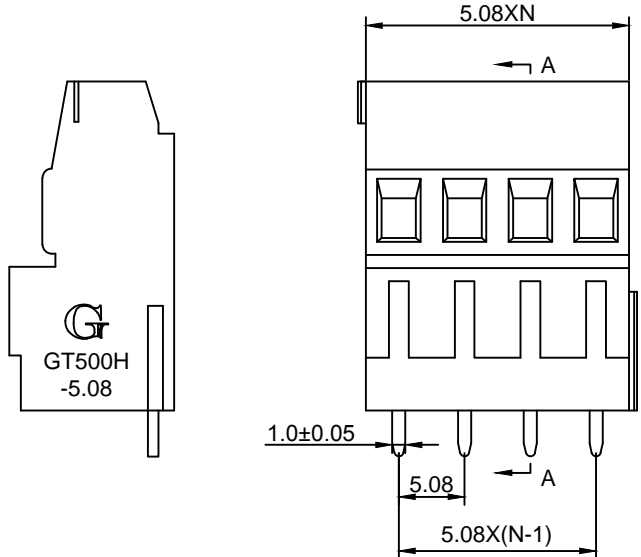
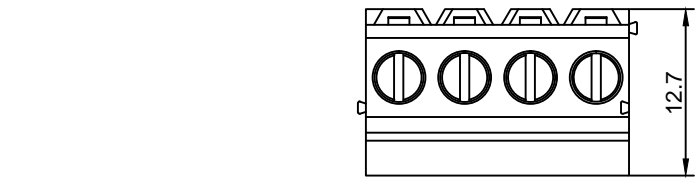
Pitch Range In mm		Nominal Dimension Range In mm					
≤6	6 ~ 10	10 ~ 24	≤30	30 ~ 60	60 ~ 100	100 ~ 150	>150
±0.10	±0.15	±0.25	±0.20	±0.30	±0.50	±0.70	±1.00
							0.05/10
							↙
							±0.1°



- ① Series No.
- ② Pitch
- ③ Poles  
02 02Contacts  
03 03Contacts  
...  
24 24Contacts
- ④ 1 Single Pitch  
2 Double Pitch
- ⑤ Color: 1 Grey  
2 Blue  
3 Black  
4 Green(Standard For AH)  
5 Orange  
6 Red  
7 Transparent  
8 Yellow  
9 White
- ⑥ Customer Request : 00--Standard
- ⑦ AH--Standard(PA66)



DETACHED LISTS	<b>Grolten</b> 宁波冠泰电子有限公司 NINGBO GOLTEN ELECTRONICS CO., LTD.							
	APPD: MA_9/15/17'	PART NO. GT500H-5.0-XXP-XX-00AH						
	CHKD: Yu_9/14/17'							
	DRFT: Chen_9/13/17'							
 THIRD ANGLE PROJECTION		<table border="1"> <tr> <td>REV</td> <td>1</td> </tr> <tr> <td>SHEET</td> <td>1/1</td> </tr> <tr> <td>SCALE</td> <td>1/1</td> </tr> </table>	REV	1	SHEET	1/1	SCALE	1/1
REV	1							
SHEET	1/1							
SCALE	1/1							
<table border="1"> <tr> <td>MM (INCH)</td> <td>DO NOT SCALE DRAWING</td> </tr> </table>		MM (INCH)	DO NOT SCALE DRAWING					
MM (INCH)	DO NOT SCALE DRAWING							



**Material :**  
 (a) Housing : PA66(UL94V-0)  
 (b) Screws : Steel , Cr<sup>3+</sup>Zn Plated  
 (c) Pin Header : Brass , Tin Plated  
 (d) Cage : Brass , Ni Plated

**Electrical :**

	UL	IEC
1.Rated Voltage :	300V	250V
2.Rated Current :	20A	24A
3.Torque Value :	M2.5 , 3.54Lb.in	M2.5 , 0.4N.m
4.Wire Range:	28-12AWG	2.5mm <sup>2</sup>
5.Stripping Length :	6-7mm	
6.Withstanding Voltage :	AC2000V/1Min.	
7.Operating Temperature :	-40 °C~+105 °C	
8.RoHS Compliance		
9.Safety Approval :	RoHS	
10.Undimensioned Tolerances:		

Pitch Range In mm		Nominal Dimension Range In mm					
≤6	6 ~ 10	10 ~ 24	30 ~ 60	60 ~ 100	100 ~ 150	>150	0.05/10
±0.10	±0.15	±0.25	±0.20	±0.30	±0.50	±0.70	±1.00
							±0.1°

GT500H - 5.08 - XXP - X X - 00 AH

①                      ②                      ③                      ④                      ⑤                      ⑥                      ⑦

- ① Series No.
- ② Pitch
- ③ Poles  
02 02Contacts  
03 03Contacts  
...  
24 24Contacts
- ④ 1 Single Pitch  
2 Double Pitch
- ⑤ Color: 1 Grey  
2 Blue  
3 Black  
4 Green(Standard For AH)  
5 Orange  
6 Red  
7 Transparent  
8 Yellow  
9 White
- ⑥ Customer Request : 00--Standard
- ⑦ AH--Standard(PA66)

DETACHED LISTS	<b>Grolten</b> 宁波冠泰电子有限公司 NINGBO GOLTEN ELECTRONICS CO., LTD.							
	APPD: MA_9/15/17'	PART NO. GT500H-5.08-XXP-XX-00AH						
	CHKD: Yu_9/14/17'							
	DRFT: Chen_9/13/17'							
 THIRD ANGLE PROJECTION		<table border="1"> <tr> <td>REV</td> <td>1</td> </tr> <tr> <td>SHEET</td> <td>1/1</td> </tr> <tr> <td>SCALE</td> <td>1/1</td> </tr> </table>	REV	1	SHEET	1/1	SCALE	1/1
REV	1							
SHEET	1/1							
SCALE	1/1							
 MM (INCH) DO NOT SCALE DRAWING								