

PCB Connector Series

KLS1-540B Pitch=2.0mm TYPE

Electrical Specification:

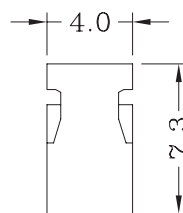
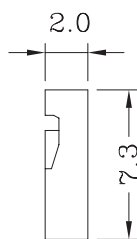
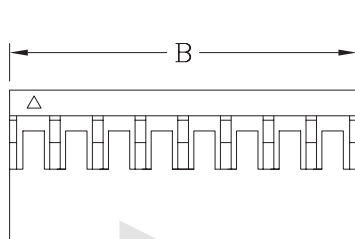
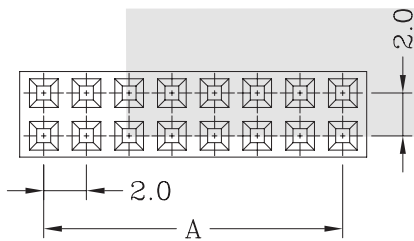
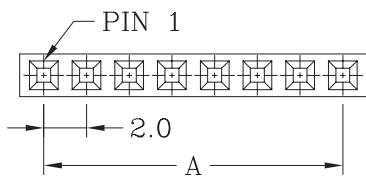
Current Rating: 2 AMP
 Insulator Resistance: 1000M Ohm min. at DC 500V
 Contact Resistance: 20m Ohm max. at DC 100mA
 Withstand voltage: 1000V AC/min
 Operating Temperature: -55°C~+105°C

Material:

Housing: Nylon 66 UL94V-0
 Contacts: Phosphor Bronze
 Plating: Tin 50u" over 100u" nickel



Housing 540B



| Part No | Dimensions | | Part No | Dimensions | |
|---------|------------|-------|---------|------------|-------|
| | A | B | | A | B |
| 1x2P | 2.00 | 4.25 | 2x2P | 2.00 | 4.25 |
| 1x3P | 4.00 | 6.25 | 2x3P | 4.00 | 6.25 |
| 1x4P | 6.00 | 8.25 | 2x4P | 6.00 | 8.25 |
| 1x5P | 8.00 | 10.25 | 2x5P | 8.00 | 10.25 |
| 1x6P | 10.00 | 12.25 | 2x6P | 10.00 | 12.25 |
| 1x7P | 12.00 | 14.25 | 2x7P | 12.00 | 14.25 |
| 1x8P | 14.00 | 16.25 | 2x8P | 14.00 | 16.25 |
| 1x9P | 16.00 | 18.25 | 2x9P | 16.00 | 18.25 |
| 1x10P | 18.00 | 20.25 | 2x10P | 18.00 | 20.25 |
| 1x11P | 20.00 | 22.25 | 2x11P | 20.00 | 22.25 |
| 1x12P | 22.00 | 24.25 | 2x12P | 22.00 | 24.25 |
| 1x13P | 24.00 | 26.25 | 2x13P | 24.00 | 26.25 |
| 1x14P | 26.00 | 28.25 | 2x14P | 26.00 | 28.25 |
| 1x15P | 28.00 | 30.25 | 2x15P | 28.00 | 30.25 |
| 1x16P | 30.00 | 32.25 | 2x16P | 30.00 | 32.25 |
| 1x17P | 32.00 | 34.25 | 2x17P | 32.00 | 34.25 |
| 1x18P | 34.00 | 36.25 | 2x18P | 34.00 | 36.25 |
| 1x19P | 36.00 | 38.25 | 2x19P | 36.00 | 38.25 |
| 1x20P | 38.00 | 40.25 | 2x20P | 38.00 | 40.25 |
| 1x21P | 40.00 | 42.25 | 2x21P | 40.00 | 42.25 |
| 1x22P | 42.00 | 44.25 | 2x22P | 42.00 | 44.25 |
| 1x23P | 44.00 | 46.25 | 2x23P | 44.00 | 46.25 |
| 1x24P | 46.00 | 48.25 | 2x24P | 46.00 | 48.25 |
| 1x25P | 48.00 | 50.25 | 2x25P | 48.00 | 50.25 |
| 1x26P | 50.00 | 52.25 | | | |
| 1x27P | 52.00 | 54.25 | | | |
| 1x28P | 54.00 | 56.25 | | | |
| 1x29P | 56.00 | 58.25 | | | |
| 1x30P | 58.00 | 60.25 | | | |
| 1x31P | 60.00 | 62.25 | | | |
| 1x32P | 62.00 | 64.25 | | | |
| 1x33P | 64.00 | 66.25 | | | |
| 1x34P | 66.00 | 68.25 | | | |
| 1x35P | 68.00 | 70.25 | | | |
| 1x36P | 70.00 | 72.25 | | | |
| 1x37P | 72.00 | 74.25 | | | |
| 1x38P | 74.00 | 76.25 | | | |
| 1x39P | 76.00 | 78.25 | | | |
| 1x40P | 78.00 | 80.25 | | | |

ORDER INFORMATION

Product NO.: KLS1-540 B-1X02-H

Series No. _____ Type: H-Housing T-Terminal
 Pitch: A=2.54mm B=2.00mm PIN Number:02 ~ 25Pin
 Pins: 1-Single layer 2-Double layer

Wire To Board Connectors

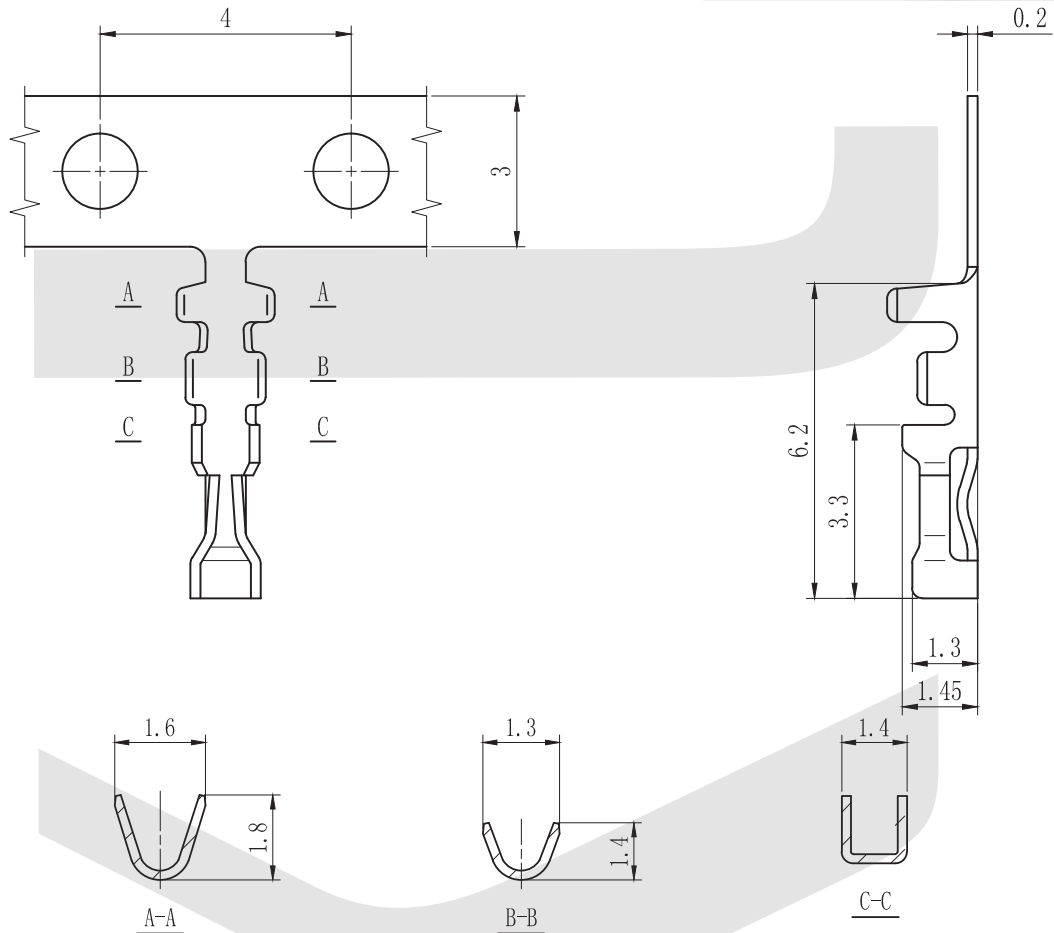
KLS1-540B Pitch=2.0mm TYPE, Terminal

Electrical Specification:

Current Rating:2.0AAC DC
Current Voltage:250V AC DC
Insulator Resistance:≥1000m Ohm
Contact Resistance:≤20m Ohm
Withstand voltage:1000V AC/MIN
Applicable wire:AWG #30~#26
Operating Temperature: -25°C~+85°C

Material:

Terminal: Phosphor Bronze,tin-plating



ORDER INFORMATION

Product NO.: KLS1-540-B-T

Series No. _____

Pitch:
A=2.54mm
B=2.00mm

Type:
H-Housing
T-Terminal



PCB Connector Series

KLS1-540A Pitch=2.54mm TYPE

Electrical Specification:

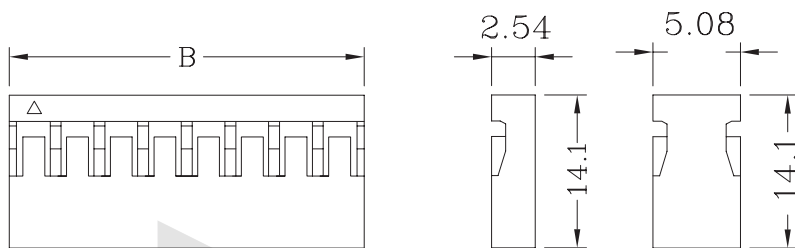
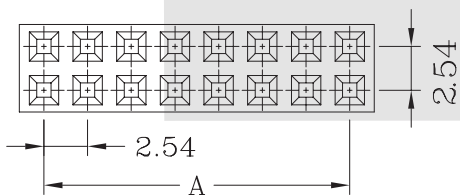
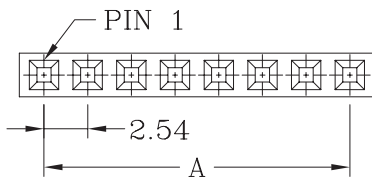
Current Rating: 3 AMP
 Insulator Resistance: 5000M Ohm min. at DC 500V
 Contact Resistance: 20m Ohm max. at DC 100mA
 Withstand voltage: 800V AC/MIN
 Operating Temperature: -55°C~+105°C

Material:

Housing: Nylon 66 UL94V-0
 Contacts: Phosphor Bronze
 Plating: Tin 50u" over 100u" nickel



Housing 540A



| Part No | Dimensions | | Part No | Dimensions | |
|---------|------------|-------|---------|------------|-------|
| | A | B | | A | B |
| 1x 2P | 2.54 | 5.08 | 2x 2P | 2.54 | 5.08 |
| 1x 3P | 5.08 | 7.62 | 2x 3P | 5.08 | 7.62 |
| 1x 4P | 7.62 | 10.16 | 2x 4P | 7.62 | 10.16 |
| 1x 5P | 10.16 | 12.70 | 2x 5P | 10.16 | 12.70 |
| 1x 6P | 12.70 | 15.24 | 2x 6P | 12.70 | 15.24 |
| 1x 7P | 15.24 | 17.78 | 2x 7P | 15.24 | 17.78 |
| 1x 8P | 17.78 | 20.32 | 2x 8P | 17.78 | 20.32 |
| 1x 9P | 20.32 | 22.86 | 2x 9P | 20.32 | 22.86 |
| 1x 10P | 22.86 | 25.40 | 2x 10P | 22.86 | 25.40 |
| 1x 11P | 25.40 | 27.94 | 2x 11P | 25.40 | 27.94 |
| 1x 12P | 27.94 | 30.48 | 2x 12P | 27.94 | 30.48 |
| 1x 13P | 30.48 | 33.02 | 2x 13P | 30.48 | 33.02 |
| 1x 14P | 33.02 | 35.56 | 2x 14P | 33.02 | 35.56 |
| 1x 15P | 35.56 | 38.10 | 2x 15P | 35.56 | 38.10 |
| 1x 16P | 38.10 | 40.64 | 2x 16P | 38.10 | 40.64 |
| 1x 17P | 40.64 | 43.18 | 2x 17P | 40.64 | 43.18 |
| 1x 18P | 43.18 | 45.72 | 2x 18P | 43.18 | 45.72 |
| 1x 19P | 45.72 | 48.26 | 2x 19P | 45.72 | 48.26 |
| 1x 20P | 48.26 | 50.80 | 2x 20P | 48.26 | 50.80 |
| 1x 21P | 50.80 | 53.34 | 2x 21P | 50.80 | 53.34 |
| 1x 22P | 53.34 | 55.88 | 2x 22P | 53.34 | 55.88 |
| 1x 23P | 55.88 | 58.42 | 2x 23P | 55.88 | 58.42 |
| 1x 24P | 58.42 | 60.96 | 2x 24P | 58.42 | 60.96 |
| 1x 25P | 60.96 | 63.50 | 2x 25P | 60.96 | 63.50 |

ORDER INFORMATION

Product NO.: KLS1-540 A-1X02-H

Series No. _____ Type: H-Housing T-Terminal
 Pitch: A=2.54mm PIN Number: 02 ~ 25Pin
 B=2.00mm Pins: 1-Single layer
 2-Double layer

PCB Connector Series

KLS1-540A Pitch=2.54mm TYPE

Electrical Specification:

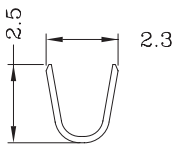
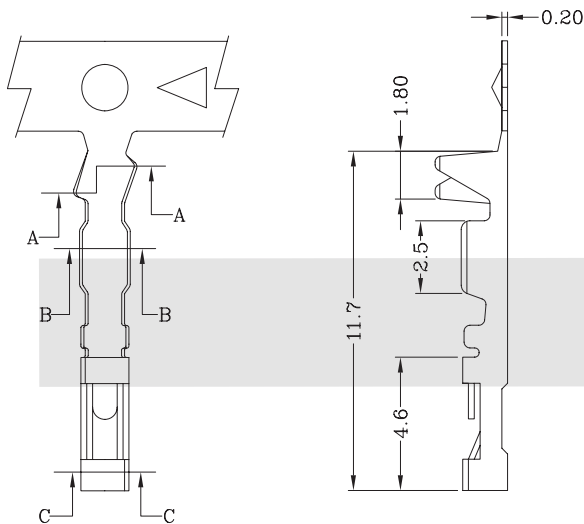
Current Rating: 3 AMP
Insulator Resistance: 5000M Ohm min. at DC 500V
Contact Resistance: 20m Ohm max. at DC 100mA
Withstand voltage: 800V AC/MIN
Operating Temperature: -55°C~+105°C

Material:

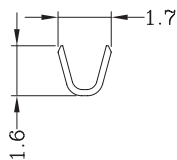
Housing: Nylon 66 UL94V-0
Contacts: Phosphor Bronze
Plating: Tin 50u" over 100u" nickel



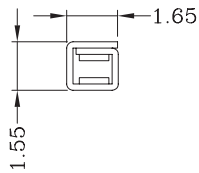
Terminal 540A



Section A-A



Section B-B



Section C-C

ORDER INFORMATION

Product NO.: KLS1-540 A-T

Series No. _____ Type: H-Housing T-Terminal
Pitch: A=2.54mm
B=2.00mm