



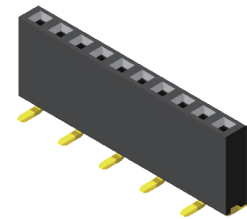
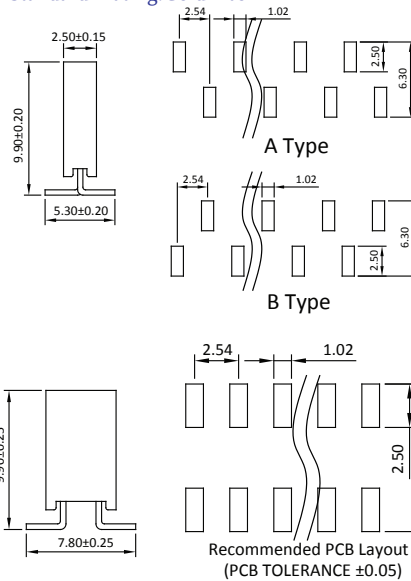
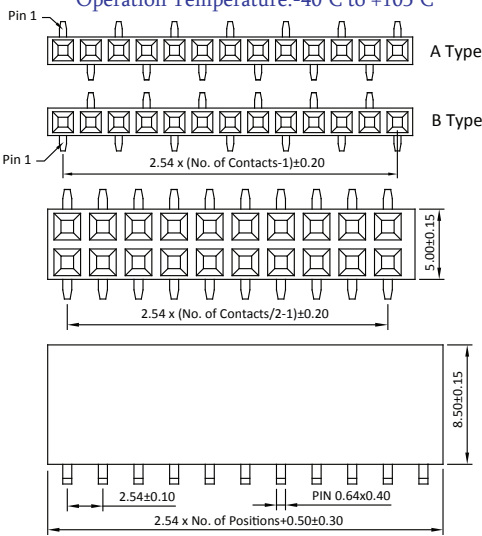
Female Header 2.54mm 1 & 2 Row H=8.5mm SMT Type

Specifications

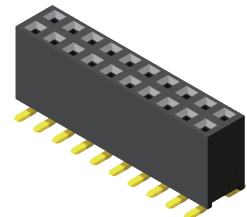
Current Rate: 3 AMP
 Insulation Resistance: 1000MΩ Min.
 Contact Resistance: 20mΩ Max.
 Dielectric Voltage: 1000V AC for one minute
 Operation Temperature: -40°C to +105°C

Material

Insulator: Hi-Temp. Thermoplastic, UL 94V-0
 Terminal: Copper Alloy
 Standard Plating: Gold Flash



P/N.: 5PS1MSA85-1XXU



P/N.: 5PS1MSA85-2XXU

Female Header 2.54mm

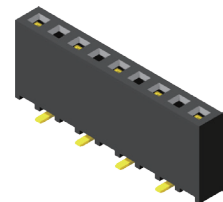
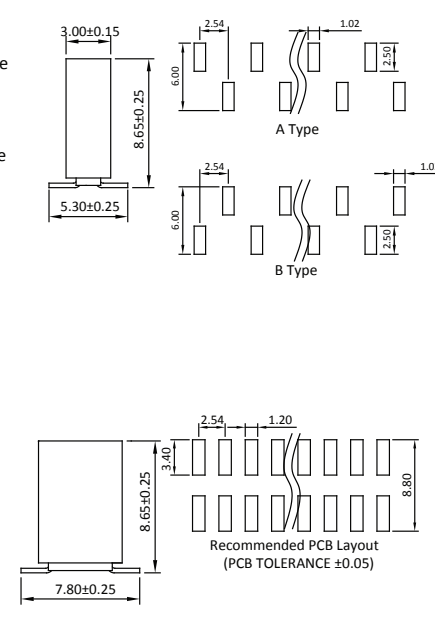
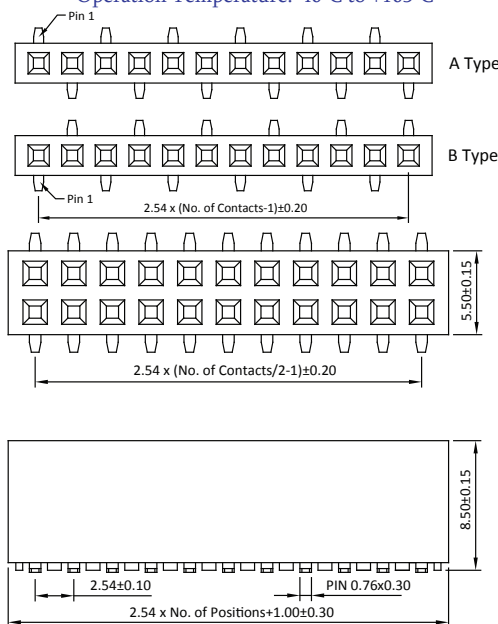
Female Header 2.54mm 1 & 2 Row H=8.5mm Triple Contact SMT Type

Specifications

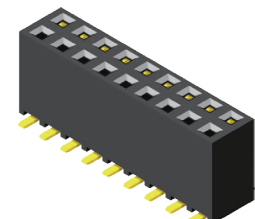
Current Rate: 3 AMP
 Insulation Resistance: 1000MΩ Min.
 Contact Resistance: 20mΩ Max.
 Dielectric Voltage: 1000V AC for one minute
 Operation Temperature: -40°C to +105°C

Material

Insulator: Hi-Temp. Thermoplastic, UL 94V-0
 Terminal: Copper Alloy
 Standard Plating: Gold Flash



P/N.: 5PS1TMA85-1XXU



P/N.: 5PS1TMA85-2XXU

ORDER INFORMATION

5	P	S	1	X	X	A	8	5	-	X	X	X	X	N	X	X	X	U					
MS: SMT TM: Triple Contact SMT		Plastic Height 85: H=8.5mm		No. of Contact Per Row (02~40) 1: Single Row 2: Dual Row		N: W/O Bump P: Inner Peg N: W/O Peg		U: RoHS Hi-Temp.		T: Tube, W/O Cap C: Tube, With Cap H: Tape & Reel, W/O Cap R: Tape & Reel, With Cap		A: A Type B: B Type (For Single Row Only)		N: Non Type (For Dual Row Only)		Old P/N: PS1M85-1/2 PS1TM85-1/2							
©G0: Gold Flash		SA: Selective		GA: Gold 5u"		SA: Selective 5u"		GB: Gold 10u"		SB: Selective 10u"		GC: Gold 20u"		SC: Selective 20u"		GD: Gold 30u"		SD: Selective 30u"		TO: Tin Plated		TE: Tin 200u"	

©: Standard Recommend
 Tube package is not available for under 1*5 & 2*5 pin counts

CONNECTORS MANUFACTURER



RoHS