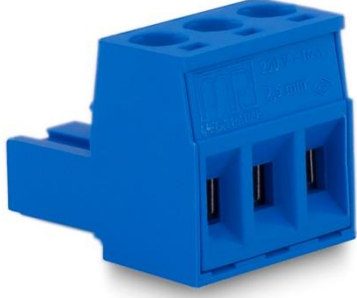


## 5,08 mm SOCKET PRINTED CIRCUIT TERMINAL– FEMALE



Production Code: 203 SBDK-D



### TECHNICAL DATA

#### DIMENSIONS

Width	15,12 mm
Height	15,33 mm
Depth	18,15 mm
Pin range	5,08 mm
Pin thickness	-
Pin hole diameter	-

### TECHNICAL DATA

Current	16 A
Voltage	250 V
Cable cross section	0,25 – 2,5 mm <sup>2</sup>
Cable stripping	7 mm
Screw size	M3
Nominal torque	0,25 Nm
Flammability rating	V0
Coating of metals	µ3+AG

### GENERAL ORDERING DATA

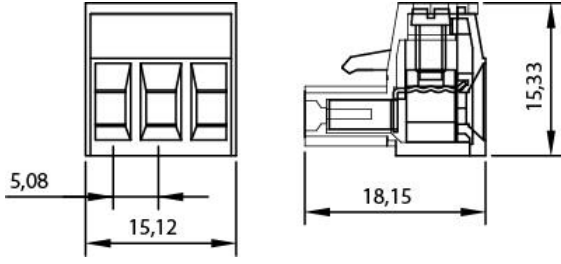
Type	5,08 mm Socket Terminal Series Female Pin 3
Qty	100 pcs
Order no	10.203 - 11.203 - 12.203 13.203 - 14.203 - 15.203
Package weight	0,52 kg
Packaging	Box
Min. Order Qty	100 pcs
Country of origin	TURKEY

\*Stock colors are blue and green.

### CERTIFICATES

CERTIFICATE	ISSUED BY
TS 10487 EN 60998-2-1	TSE
CE	SZUTEST CO.
RoHS	İNTERTEK A.Ş.
EAC	SERCONS

## DRAWINGS



5,08 mm SBDK-E 180° Closed (10.453)



5,08 mm SBDK-KE 90° (10.525)



## COMBINE PRODUCTS

5,08 mm SBDK-E 90° Open (10.303)



5,08 mm SBDK-KE 180° (10.575)



5,08 mm SBDK-E 180° Open (10.353)



5,08 mm SKBK (10.603)



5,08 mm SBDK-E 90° Closed (10.403)

