

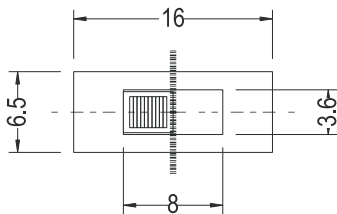
Switch

Slide Switch Series

KLS7-SS40-23D01 (2P3T) Slide Switch Series

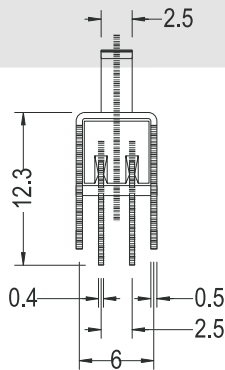
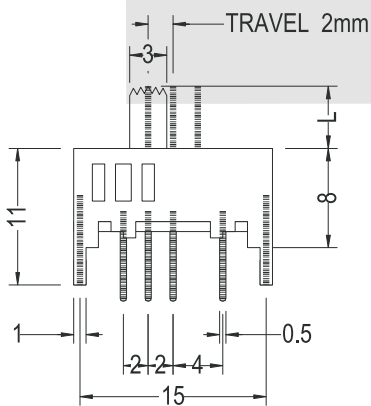
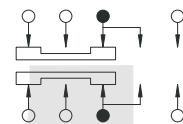
SPECIFICATIONS

- Rating: 0.3A 50VDC
- Contact Resistance: 30mΩ Max
- Insulation Resistance: 500VDC 100MΩ Min
- Dielectric Strength: 500V AC 1 Minute
- Operating Force: 100gf~800gf
- Electrical Life : 10,000 cycles

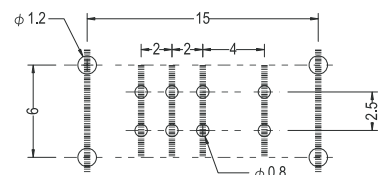


L=2 - 12

SCHEMATIC



P.C.B. HOLE DETAIL



ORDER INFORMATION

KLS7-SS40 - 2 3 D 01 - X X - X

Part Number

Slide Switch Type

Pole

Throw

Operating Force

Knobe Height

Sequential No.

Travelling					
C	D	E	F	G	H
1.5	2.0	2.5	3.0	3.5	4.0
I	J	K	L	N	P
4.5	5.0	5.5	6.0	7.0	8.0

