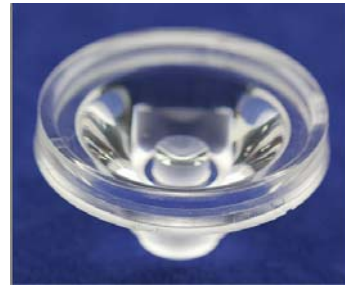




Product Datasheet  
Lens Series  
Last update: 21/1/2014

## DETAILS

Product Number: BK-LED-68014  
Type: Lens  
Color: Clear  
Diameter: 32.00mm  
Height: 17.00mm  
Shape: Round  
Optic Material: PMMA  
Holder Material: No Holder  
ROHS Compliant: Yes  
Date Updated: 8/1/2014

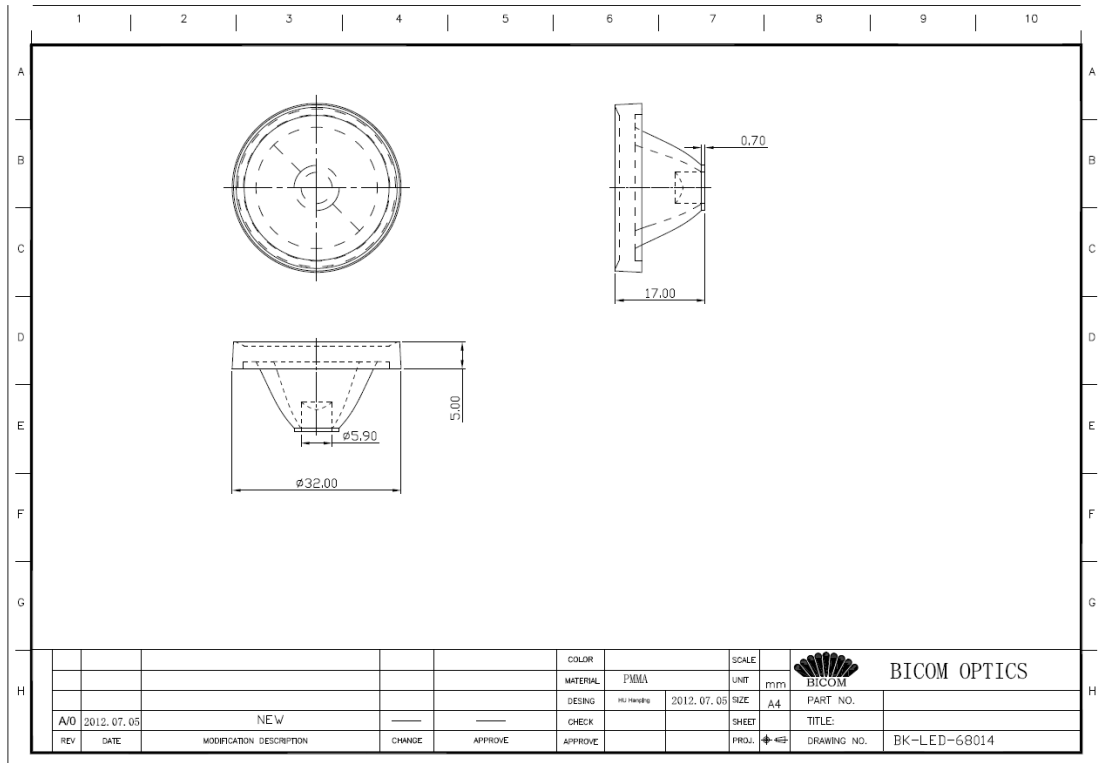



## Optical properties

LED	FWHM (50%)	FWHM (10%)	Efficiency	cd/lm	Beam Type
Z-Power LED P3-II	14.3°	32.6°	90.5%	8.03	Narrow

Shenzhen Baikang Optical Co.,Ltd.  
Add: B4 Building, Xinjianxing Industrial Park,  
Fengxin Road, Guangming District, Shenzhen  
Mail: 518107  
www.bicomoptics.com

Skype: szbaikang  
Fax: +86 755 82033711  
Phone: +86 755 29199996  
MSN: szbaikang@hotmail.com  
E-mail: sales@bicomoptics.com



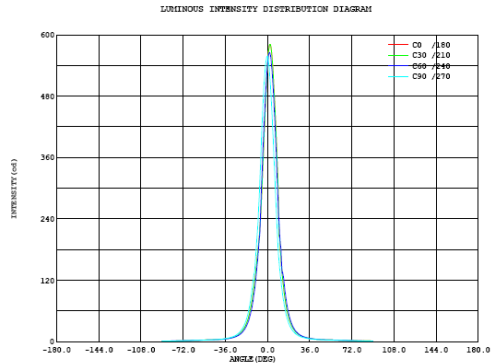
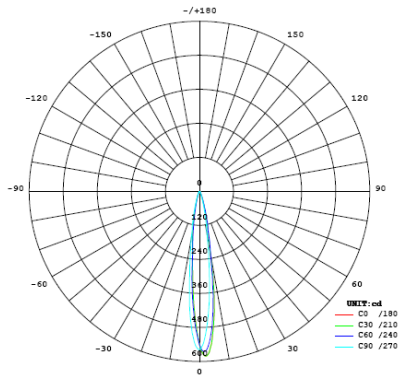
						COLOR		SCALE		 <b>BICOM OPTICS</b>	
						MATERIAL	PMMA	UNIT	mm		
						DESIGN	HLI 11111111	DATE	2012.07.05	SIZE	A4
						CHECK				SHEET	
						PROJ.				DRAWING NO.	BK-LED-68014
REV	DATE	MODIFICATION DESCRIPTION	CHANGE	APPROVE	APPROVE						
A/0	2012.07.05	NEW								PART NO.	
										TITLE	

Shenzhen Baikang Optical Co.,Ltd.  
 Add: B4 Building, Xinjianxing Industrial Park,  
 Fengxin Road, Guangming District, Shenzhen  
 Mail: 518107  
 www.bicomoptics.com

Skype: szbaikang  
 Fax: +86 755 82033711  
 Phone: +86 755 29199996  
 MSN: szbaikang@hotmail.com  
 E-mail: sales@bicomoptics.com

Z-Power LED P3-II

I: 0.35A



Intensity data:(deg , cd) C0 /180

A	I	A	I	A	I	A	I	A	I	A	I
-90.0	0.8599	-58.5	2.719	-27.0	10.36	4.5	538.9	36.0	6.138	67.5	2.344
-88.5	0.8832	-57.0	2.787	-25.5	12.14	6.0	475.9	37.5	5.549	69.0	2.259
-87.0	0.9098	-55.5	2.851	-24.0	14.69	7.5	398.4	39.0	5.072	70.5	2.181
-85.5	0.9653	-54.0	2.948	-22.5	17.77	9.0	306.7	40.5	4.672	72.0	2.051
-84.0	1.016	-52.5	3.056	-21.0	21.97	10.5	203.1	42.0	4.432	73.5	1.968
-82.5	1.100	-51.0	3.184	-19.5	27.46	12.0	147.5	43.5	4.199	75.0	1.832
-81.0	1.151	-49.5	3.270	-18.0	34.99	13.5	112.4	45.0	3.955	76.5	1.754
-79.5	1.207	-48.0	3.417	-16.5	44.24	15.0	84.53	46.5	3.758	78.0	1.657
-78.0	1.296	-46.5	3.577	-15.0	57.52	16.5	63.66	48.0	3.548	79.5	1.598
-76.5	1.391	-45.0	3.728	-13.5	75.51	18.0	48.65	49.5	3.439	81.0	1.526
-75.0	1.518	-43.5	3.870	-12.0	98.30	19.5	38.02	51.0	3.281	82.5	1.445
-73.5	1.582	-42.0	4.071	-10.5	124.6	21.0	29.87	52.5	3.188	84.0	1.424
-72.0	1.675	-40.5	4.330	-9.0	157.0	22.5	23.73	54.0	3.103	85.5	1.338
-70.5	1.875	-39.0	4.582	-7.5	192.1	24.0	19.17	55.5	3.005	87.0	1.295
-69.0	1.951	-37.5	4.911	-6.0	237.1	25.5	15.96	57.0	2.917	88.5	1.224
-67.5	2.116	-36.0	5.301	-4.5	310.8	27.0	13.30	58.5	2.837	90.0	1.239
-66.0	2.186	-34.5	5.818	-3.0	395.3	28.5	11.29	60.0	2.758		
-64.5	2.287	-33.0	6.419	-1.5	471.9	30.0	9.718	61.5	2.713		
-63.0	2.425	-31.5	7.192	0.0	538.7	31.5	8.608	63.0	2.637		
-61.5	2.511	-30.0	8.017	1.5	577.6	33.0	7.625	64.5	2.549		
-60.0	2.610	-28.5	9.037	3.0	575.5	34.5	6.819	66.0	2.411		

Electricity Parameter:

Voltage : 3.280 V Current : 0.3500 A  
 Power P: 1.148 W Power Factor: 1.000

Optical Parameter (Distance:3.160m) :

Luminous flux = 72.40 lm Efficiency: Eff=63.07 lm/W  
 Avg. Beam angle: @ (25%):21.7deg @ (50%):14.3deg @ (75%):9.3deg @ (10%):32.6deg  
 C0 /180: @ (25%):21.8deg @ (50%):14.1deg @ (75%):9.2deg @ (10%):32.5deg  
 C0 /180 I<sub>max</sub> = 581.2 cd (G=2.0deg) I<sub>o</sub> = 538.7 cd

H(β) Range:-90 - 90DEG V(B) Range:-90 - 90DEG  
 H(β) Interval: 0.5DEG V(B) Interval: 0.5DEG  
 Test Speed: HIGH Test System:EVERFINE GO-SPEC316 SYSTEM V1.0.254  
 Temperature:25.3DEG Humidity:65.0%  
 Operators:BICOM Test Distance:3.160m [K=1.0000]  
 Test Date:2009-10-15 Remarks: 整体式灯具, 灯具效率(相对)计为100%。

Shenzhen Baikang Optical Co.,Ltd.  
 Add: B4 Building, Xinjianxing Industrial Park,  
 Fengxin Road, Guangming District, Shenzhen  
 Mail: 518107  
 www.bicomoptics.com

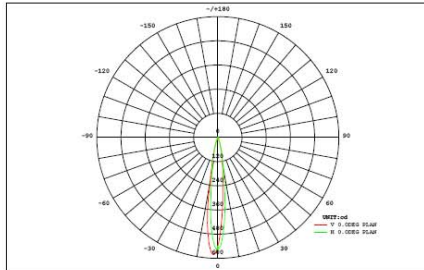
Skype: szbaikang  
 Fax: +86 755 82033711  
 Phone: +86 755 29199996  
 MSN: szbaikang@hotmail.com  
 E-mail: sales@bicomoptics.com

Z-Power LED P3-II

I: 0.35A

LUMINAIRE PHOTOMETRIC TEST REPORT

NAME: 68014	TYPE:灯具	WEIGHT:1
DIMENSION: 1	SPECIFICATION:10	SERIAL No.:001
MANUFACTURER: BICOM	SURFACE:1	PROTECTION ANGLE:60



DATA OF LAMP		PHOTOMETRIC DATA	
MODEL	SEOUL P3-2	Imax (cd)	581.2
NOMINAL POWER (W)	1	AVAILABILITY (%)	56.4
RATED VOLTAGE (V)	3.28	Avai. FLUX (lm)	45.11
NOMINAL FLUX (lm)	80.000	EFFICIENCY (%)	90.5
LAMPS INSIDE	1	TOTAL FLUX (lm)	72.37
TEST VOLTAGE (V)	3.28	$\theta$ @50% (H,V)	14,15DEG

VERTICAL (DEG)	AREA FLUX DIAGRAM																UNIT:lm			$\Phi t$	$\Phi a$
	0.00	0.01	0.01	0.02	0.02	0.03	0.03	0.03	0.03	0.03	0.03	0.02	0.02	0.02	0.01	0.01	0.01	0.00	0.34		
90	0.00	0.01	0.01	0.02	0.02	0.03	0.03	0.03	0.03	0.03	0.03	0.02	0.02	0.02	0.01	0.01	0.01	0.00	0.34	0.00	
80	0.00	0.01	0.02	0.02	0.03	0.03	0.04	0.04	0.04	0.04	0.04	0.03	0.03	0.02	0.01	0.01	0.00	0.46	0.00		
70	0.00	0.01	0.02	0.03	0.04	0.05	0.06	0.06	0.07	0.06	0.06	0.06	0.05	0.04	0.02	0.01	0.00	0.65	0.00		
60	0.00	0.01	0.02	0.04	0.05	0.06	0.08	0.08	0.09	0.08	0.08	0.07	0.06	0.05	0.03	0.02	0.01	0.00	0.84	0.00	
50	0.00	0.01	0.03	0.04	0.06	0.08	0.09	0.11	0.11	0.11	0.10	0.09	0.07	0.05	0.04	0.02	0.01	0.00	1.02	0.00	
40	0.00	0.01	0.03	0.05	0.07	0.09	0.12	0.16	0.18	0.17	0.15	0.11	0.08	0.06	0.04	0.02	0.01	0.00	1.37	0.00	
30	0.00	0.01	0.03	0.05	0.07	0.11	0.20	0.34	0.45	0.42	0.28	0.16	0.10	0.07	0.05	0.03	0.01	0.00	2.39	0.00	
20	0.00	0.01	0.03	0.05	0.08	0.14	0.33	1.05	2.20	1.82	0.75	0.26	0.12	0.08	0.05	0.03	0.01	0.00	7.04	3.14	
10	0.00	0.01	0.03	0.05	0.09	0.17	0.49	2.50	10.2	7.13	1.68	0.37	0.14	0.08	0.05	0.03	0.01	0.00	23.0	20.4	
0	0.00	0.01	0.03	0.05	0.09	0.16	0.46	2.24	9.68	6.77	1.52	0.36	0.14	0.08	0.05	0.03	0.01	0.00	21.7	18.9	
-10	0.00	0.01	0.03	0.05	0.08	0.14	0.30	0.84	2.06	1.80	0.63	0.24	0.12	0.08	0.05	0.03	0.01	0.00	6.49	2.67	
-20	0.00	0.01	0.03	0.05	0.07	0.11	0.18	0.31	0.47	0.45	0.27	0.15	0.10	0.07	0.05	0.03	0.01	0.00	2.36	0.00	
-30	0.00	0.01	0.03	0.05	0.06	0.09	0.12	0.16	0.19	0.18	0.15	0.11	0.08	0.06	0.04	0.02	0.01	0.00	1.37	0.00	
-40	0.00	0.01	0.02	0.04	0.06	0.07	0.09	0.10	0.11	0.11	0.10	0.09	0.07	0.06	0.04	0.02	0.01	0.00	1.02	0.00	
-50	0.00	0.01	0.02	0.03	0.05	0.06	0.07	0.08	0.08	0.08	0.08	0.07	0.06	0.05	0.03	0.02	0.01	0.00	0.82	0.00	
-60	0.00	0.01	0.02	0.03	0.04	0.05	0.06	0.06	0.06	0.06	0.06	0.06	0.05	0.04	0.03	0.02	0.01	0.00	0.65	0.00	
-70	0.00	0.01	0.02	0.02	0.03	0.03	0.04	0.04	0.04	0.04	0.04	0.04	0.04	0.03	0.03	0.02	0.01	0.00	0.47	0.00	
-80	0.00	0.01	0.01	0.02	0.02	0.03	0.03	0.03	0.03	0.03	0.03	0.03	0.03	0.03	0.02	0.02	0.01	0.00	0.35	0.00	
-90	0.00	0.01	0.01	0.02	0.02	0.03	0.03	0.03	0.03	0.03	0.03	0.03	0.03	0.02	0.02	0.01	0.01	0.00	0.35	0.00	
	-90	-80	-70	-60	-50	-40	-30	-20	HORIZONTAL (DEG)	20	30	40	50	60	70	80	90				
$\Phi t$	0.06	0.22	0.43	0.69	1.01	1.51	2.78	8.24	26.1	19.4	6.05	2.32	1.37	0.95	0.64	0.38	0.18	0.05	72	---	
$\Phi a$	0.00	0.00	0.00	0.00	0.00	0.00	0.00	4.08	23.0	16.2	1.85	0.00	0.00	0.00	0.00	0.00	0.00	0.00	---	45	

H( $\beta$ ) Range:-90 - 90DEG  
H( $\beta$ ) Interval: 0.5DEG  
Test Speed: HIGH  
Temperature:25.3DEG  
Operators:BICOM  
Test Date:2009-10-15

V(B) Range:-90 - 90DEG  
V(B) Interval: 0.5DEG  
Test System:EVERFINE GO-SPEC316 SYSTEM V1.0.254  
Humidity:65.0%  
Test Distance:3.160m [K=1.0000]  
Remarks: 整体式灯具, 灯具效率(相对)计为100%。

Shenzhen Baikang Optical Co.,Ltd.  
Add: B4 Building, Xinjianxing Industrial Park,  
Fengxin Road, Guangming District, Shenzhen  
Mail: 518107  
www.bicomoptics.com

Skype: szbaikang  
Fax: +86 755 82033711  
Phone: +86 755 29199996  
MSN: szbaikang@hotmail.com  
E-mail: sales@bicomoptics.com