



AL0204 SERIES ~ Axial Leaded Inductors

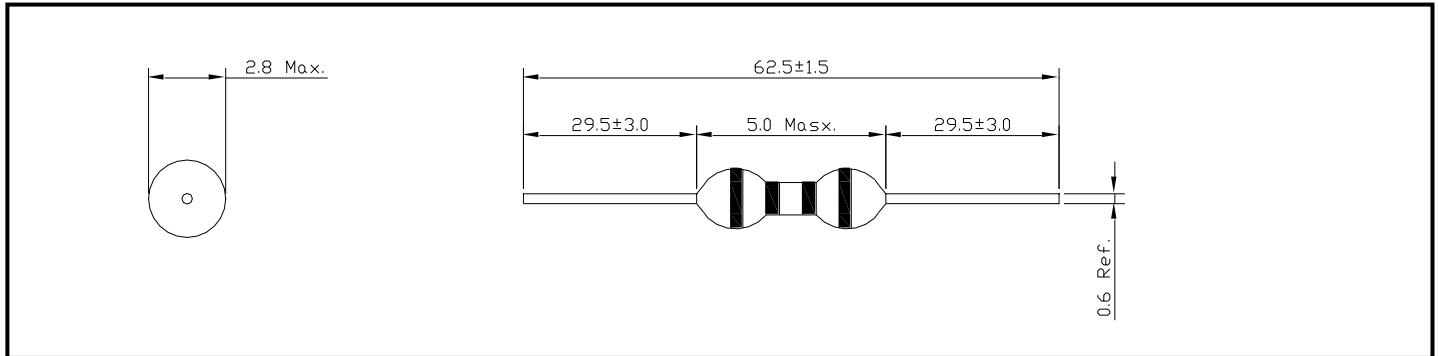


PART NUMBERING SYSTEM

AL	0204	—	R10M	—	LF
TYPE	DIMENSIONS		INDUCTANCE		LEAD FREE

SHAPES AND DIMENSIONS

UNIT : mm





AL0204 SERIES ~ Axial Leaded Inductors



SPECIFICATION TABLE

PART NUMBER	INDUCTANCE (μ H)	Q (min)	DCR (Ω) (max)	IDC (mA) (max)	SRF(MHz) (min)	TEST FREQ. (f)
AL0204-R10M-LF	0.10 \pm 20%	35	0.180	700	300	25.2MHz
AL0204-R12M-LF	0.12 \pm 20%	35	0.200	660	300	25.2MHz
AL0204-R15M-LF	0.15 \pm 20%	35	0.220	620	300	25.2MHz
AL0204-R18M-LF	0.18 \pm 20%	35	0.240	600	300	25.2MHz
AL0204-R22M-LF	0.22 \pm 20%	35	0.400	400	150	25.2MHz
AL0204-R27M-LF	0.27 \pm 20%	35	0.430	380	150	25.2MHz
AL0204-R33M-LF	0.33 \pm 20%	35	0.480	370	150	25.2MHz
AL0204-R39M-LF	0.39 \pm 20%	35	0.510	350	150	25.2MHz
AL0204-R47M-LF	0.47 \pm 20%	35	0.560	330	150	25.2MHz
AL0204-R56M-LF	0.56 \pm 20%	35	0.610	320	150	25.2MHz
AL0204-R68M-LF	0.68 \pm 20%	35	0.670	310	150	25.2MHz
AL0204-R82M-LF	0.82 \pm 20%	35	0.740	290	150	25.2MHz
AL0204-1R0K-LF	1.00 \pm 10%	35	0.800	270	150	25.2MHz
AL0204-1R2K-LF	1.20 \pm 10%	40	0.900	260	110	7.96MHz
AL0204-1R5K-LF	1.50 \pm 10%	40	1.000	250	70	7.96MHz
AL0204-1R8K-LF	1.80 \pm 10%	40	1.100	240	60	7.96MHz
AL0204-2R2K-LF	2.20 \pm 10%	40	1.200	230	45	7.96MHz
AL0204-2R7K-LF	2.70 \pm 10%	40	1.300	220	40	7.96MHz
AL0204-3R3K-LF	3.30 \pm 10%	40	1.400	210	38	7.96MHz
AL0204-3R9K-LF	3.90 \pm 10%	40	1.500	200	36	7.96MHz
AL0204-4R7K-LF	4.70 \pm 10%	40	1.700	190	32	7.96MHz
AL0204-5R6K-LF	5.60 \pm 10%	40	1.900	180	30	7.96MHz
AL0204-6R8K-LF	6.80 \pm 10%	40	2.000	175	28	7.96MHz
AL0204-8R2K-LF	8.20 \pm 10%	40	2.200	165	26	7.96MHz
AL0204-100K-LF	10.0 \pm 10%	40	2.500	160	24	7.96MHz



AL0204 SERIES ~ Axial Leaded Inductors



SPECIFICATION TABLE

PART NUMBER	INDUCTANCE (μ H)	Q (min)	DCR (Ω) (max)	IDC (mA) (max)	SRF(MHz) (min)	TEST FREQ. (f)
AL0204-120K-LF	12.0 \pm 10%	40	2.500	150	22	2.52MHz
AL0204-150K-LF	15.0 \pm 10%	40	2.800	145	20	2.52MHz
AL0204-180K-LF	18.0 \pm 10%	40	3.100	140	18	2.52MHz
AL0204-220K-LF	22.0 \pm 10%	40	3.400	100	17	2.52MHz
AL0204-270K-LF	27.0 \pm 10%	40	4.300	80	16	2.52MHz
AL0204-330K-LF	33.0 \pm 10%	40	4.700	75	14	2.52MHz
AL0204-390K-LF	39.0 \pm 10%	40	5.200	74	13	2.52MHz
AL0204-470K-LF	47.0 \pm 10%	40	5.800	70	12	2.52MHz
AL0204-560K-LF	56.0 \pm 10%	40	6.400	68	11	2.52MHz
AL0204-680K-LF	68.0 \pm 10%	40	7.200	64	10	2.52MHz
AL0204-820K-LF	82.0 \pm 10%	40	11.000	46	9.5	2.52MHz
AL0204-101K-LF	100 \pm 10%	40	12.000	44	9.0	2.52MHz
AL0204-121K-LF	120 \pm 10%	40	13.000	42	8.0	0.796MHz
AL0204-151K-LF	150 \pm 10%	40	16.000	39	6.0	0.796MHz
AL0204-181K-LF	180 \pm 10%	40	18.000	37	5.0	0.796MHz
AL0204-221K-LF	220 \pm 10%	40	20.000	35	5.0	0.796MHz
AL0204-271K-LF	270 \pm 10%	40	25.000	25	4.6	0.796MHz
AL0204-331K-LF	330 \pm 10%	40	30.000	25	4.2	0.796MHz
AL0204-391K-LF	390 \pm 10%	40	34.000	25	3.8	0.796MHz
AL0204-471K-LF	470 \pm 10%	40	38.000	24	3.5	0.796MHz
AL0204-561K-LF	560 \pm 10%	40	42.000	24	3.2	0.796MHz
AL0204-681K-LF	680 \pm 10%	40	46.000	24	2.0	0.796MHz
AL0204-821K-LF	820 \pm 10%	40	48.000	22	2.0	0.796MHz
AL0204-102K-LF	1000 \pm 10%	40	50.000	22	1.5	0.796MHz