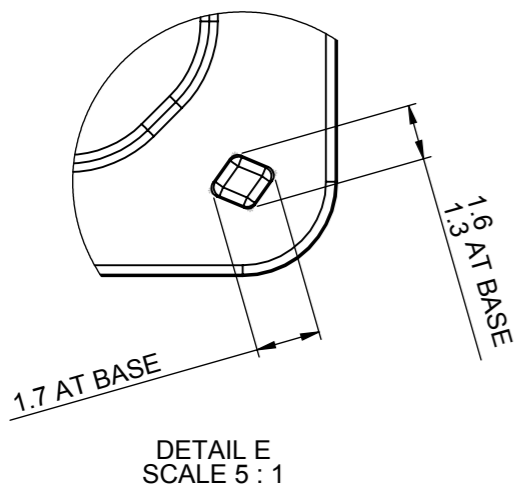
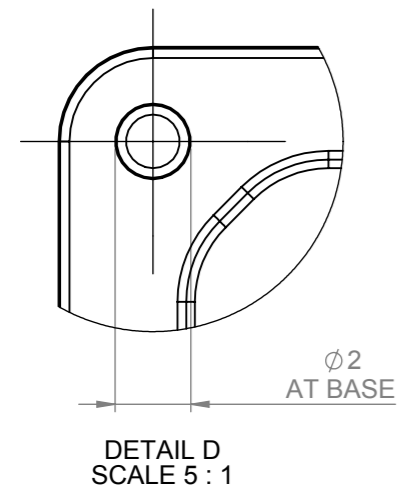
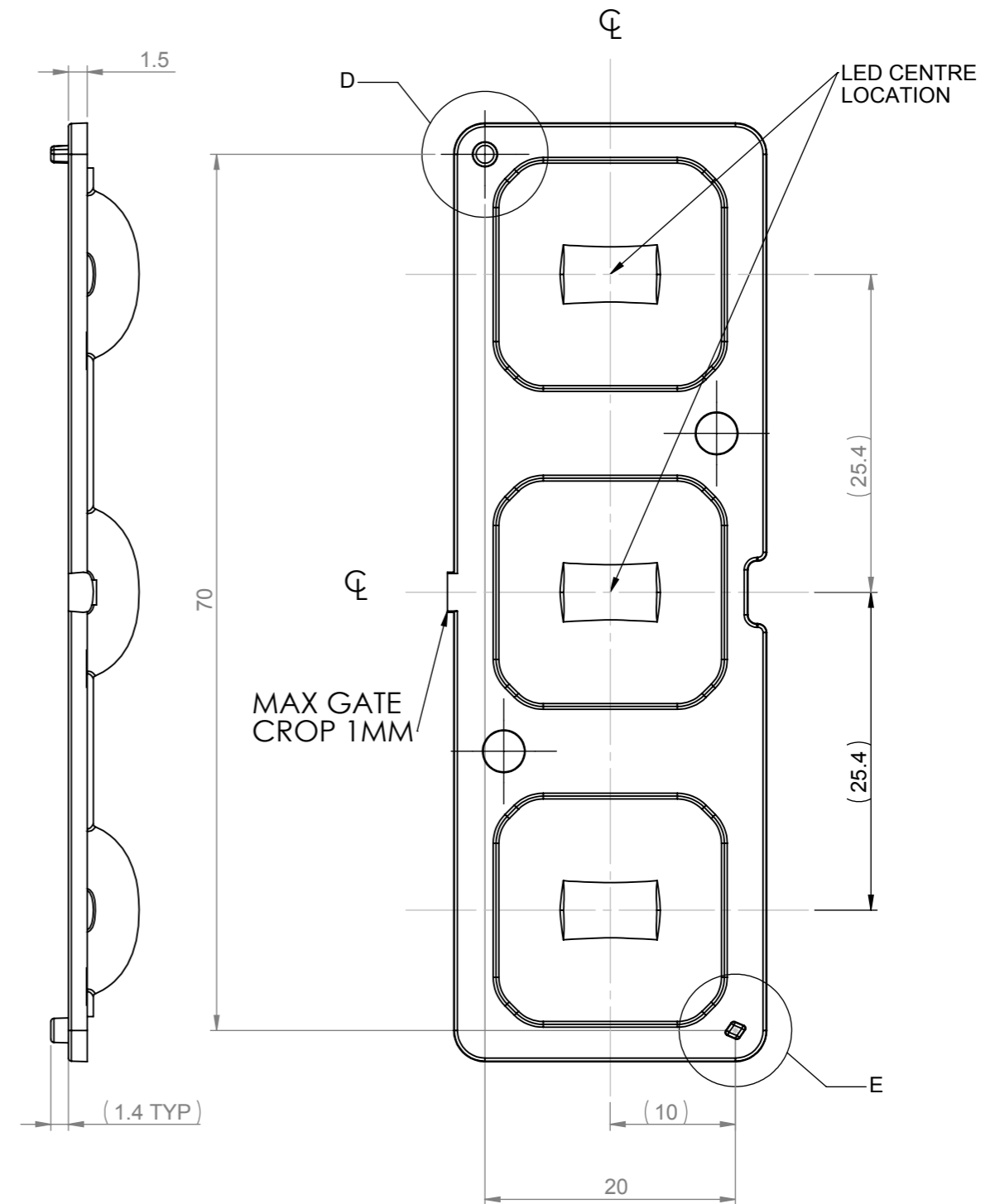
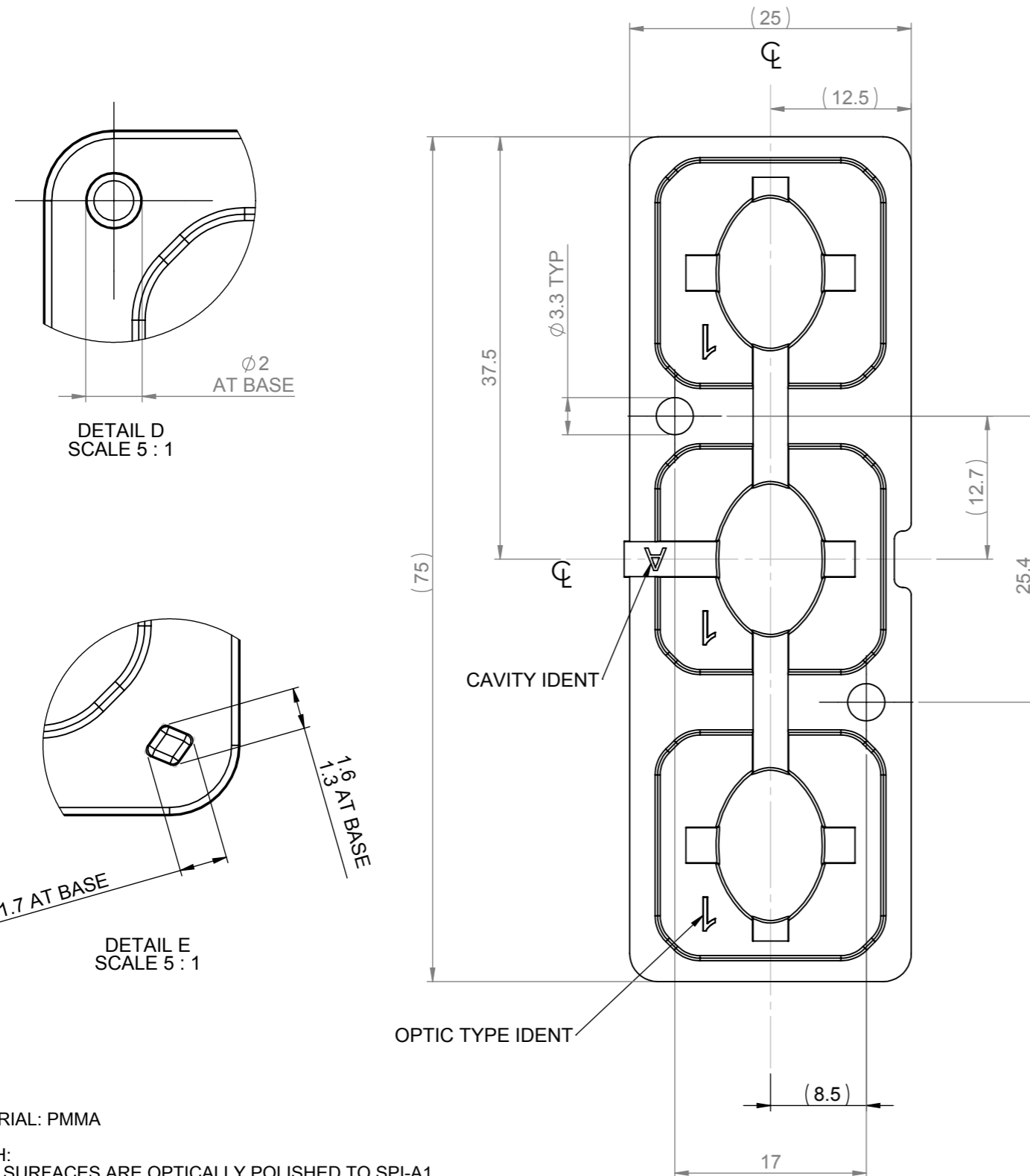


CUSTOMER DRAWING

REVISIONS					
REV	D.C.N NUMBER	DESCRIPTION	DATE	CHECKED BY DATE	APPROVED BY DATE
1	1367	FIRST PRODUCTION PART - B.B	04/02/2014	P.S 04/02/2014	M.B 18/02/2014
2	1442	OPTIC TYPE IDENT ADDED. P.SUTTON	09/09/2015		



- NOTES:
- 1 - MATERIAL: PMMA
 - 2 - FINISH: OPTICAL SURFACES ARE OPTICALLY POLISHED TO SPI-A1 COMMERCIAL POLISH SPI-A3 FOR ALL NON OPTICAL SURFACES.
 - 3 - OVERALL PART THICKNESS = SEE 3D FILE
 - 4 - GENERAL DRAFT 2°
 - 5 - GENERAL FILLET 0.25mm
 - 6 - DIMENSIONS IN BRACKETS ARE FRO INFORMATION ONLY AND NOT FOR INSPECTION

SHEET 2 OF 2

		Title		MINI HUBBLE I 1 BY 3 ARRAY	
103 Buckingham Avenue SL1 4PF, UK. Tel: +44(0) 01753 575 011 Fax: +44(0) 01753 811 359 sales@carclo-optics.com www.carclo-optics.com		Drawn by	BB	Customer	CARCLO
THIRD ANGLE PROJECTION 		GENERAL TOLERANCES UNLESS OTHERWISE STATED LINEAR: 0 ±0.25, 0.0 ±0.1, 0.00 ±0.05 ANGULAR: 0 ±1°, 0.0 ±0.5°, 0.00 ±0.1°		DIMENSION IN mm CAD File: 12764_70289_Rev-2 Part N°: 12764	
CARCLO Optics CONFIDENTIAL: UNAUTHORISED COPYING, DISCUSSION & DISTRIBUTION PROHIBITED		Format Size: A3 Scale: 2:1		Drw N°: 70289	