

**SPECIFICATIONS**

Rated Current:5.0AMP

Contact Resistance:20mΩ Max

Withstand Voltage:500V AC/DC

Insulation Resistance:1000MΩ Min

Operation Temperature:-40°C to +105°C

Contact Material:Brass

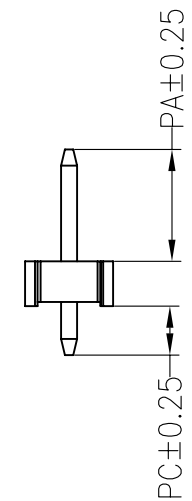
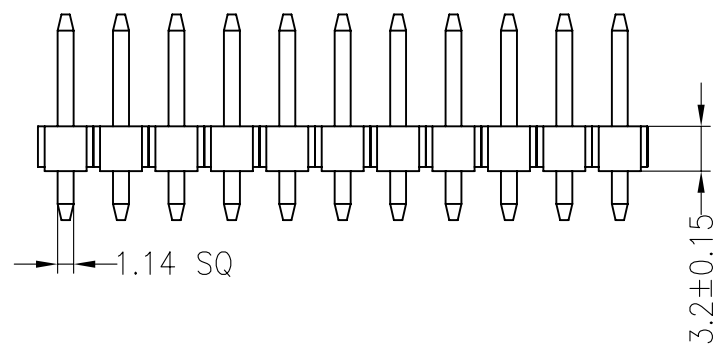
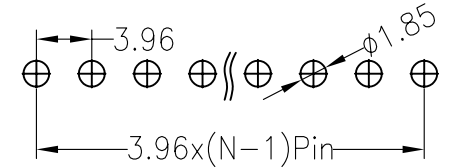
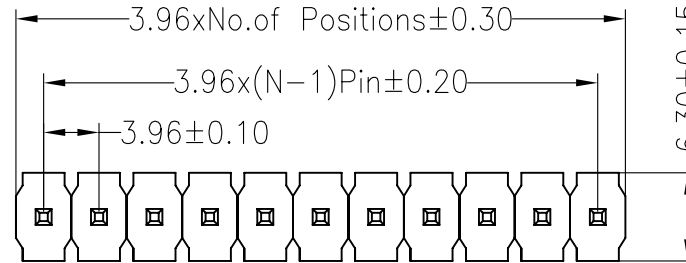
Contact Plating:Au or Sn Over Ni

Insulator Material:Polyester(UL94V-0)

Standard: LCP

Max.Processing Temp: 230°C for 30-60 seconds  
(260°C for 5 seconds)

Recommended P.C.B Layout(Top Side)  
(PCB BOARD TOLERANCE±0.05)



Dimension antitheses list			
ITEM	PA	PC	L
Standard	8.00	3.50	14.7
Alternate			

				OPERATION		DRAW	Ben	12.04.11	SCALE	FIT	<b>KLS ELECTRONIC CO., LTD</b>		
				X.X	±0.30				UNIT	mm			
				X.XX	±0.20	CHECK		SIZE	A4	PART NO.			L-KLS1-3.96D-1-05-S-3.5*8.0*14.7
A0	2012.04.11	NEW DRAWING		X.XXX	±0.10	APPROVE		SHEET	1/1	TITLE:			3.96PH 1xNpin H3.2mm 180°
REV	DATE	MODIFICATION DESCRIPTION		CHANGE	DIM	TOL		PROJ.	◆ ↗				
1	2	3	4	5	6	7	8	9					