

Appearance & Shape: To be free from any defect such as flow, burrs, unevenness etc, As per IEC standards.

Effective Parameters irrespective of material grade (per piece)

- Effective Length (L_e): 38.7 mm
 - Effective Area (A_e): 20.0mm²
 - Effective Area (A_{Min}): 20.0mm²
 - Effective Volume (V_e): 770mm³
- Approximate weight : 3.85g/pc**



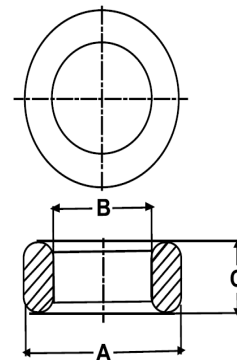
T1606 OL (Un- Coated)

Test Conditions: 10kHz/150mV/CFR COIL,N=01/Lo=Zero/25°C

Material Grade	Initial Permeability (μ_{iac})	AL Value (nH)	Ordering code
CF196	2000 \pm 20%	1300+30%/-20%	CF196T1606
CF139	2100 \pm 20%	1350+30%/-20%	CF139T1606
CF130	3000 \pm 20%	1950+30%/-20%	CF130T1606
CF195A	5000 \pm 20%	3200+30%/-20%	CF195AT1606
CF265	5000 \pm 20%	3200+30%/-20%	CF265T1606
CF190	6000 \pm 20%	3900+30%/-20%	CF190T1606
CF197	7000 \pm 20%	4500+30%/-20%	CF197T1606
CF199	9000 \pm 20%	5800 \pm 30%	CF199T1606

Dimensions(Un-coated Core)

Dimension	Nominal (in mm)	Maximum (in mm)	Minimum (in mm)
A	16.0	16.4	15.6
B	9.6	9.9	9.3
C	6.3	6.5	6.1



For general terms and conditions please visit: http://www.cosmoferrites.com/Downloads/Downloads/bcb70e7c-ae33-40ec-a881-0d5120db57b6_GTC.pdf