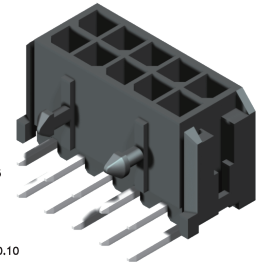
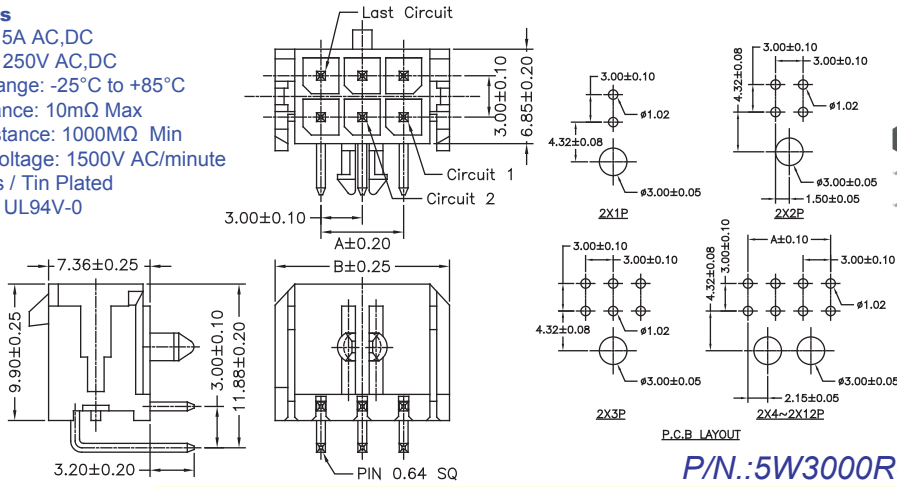


## 3.0mm Wafer Right Angle / Straight Type

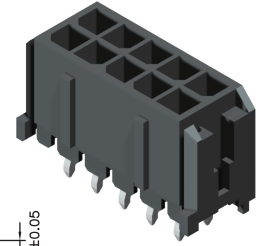
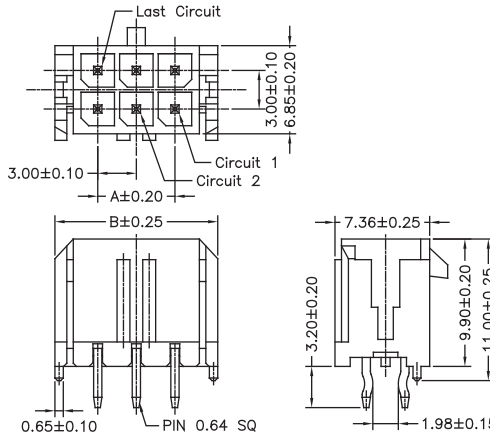
### Specifications

Current Rating: 5A AC,DC  
 Voltage Rating: 250V AC,DC  
 Temperature Range: -25°C to +85°C  
 Contact Resistance: 10mΩ Max  
 Insulation Resistance: 1000MΩ Min  
 Withstanding Voltage: 1500V AC/minute  
 Terminal: Brass / Tin Plated  
 Material: P.B.T, UL94V-0

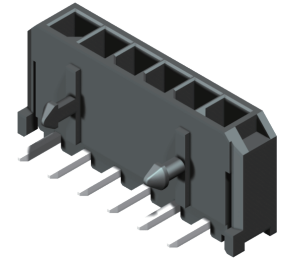
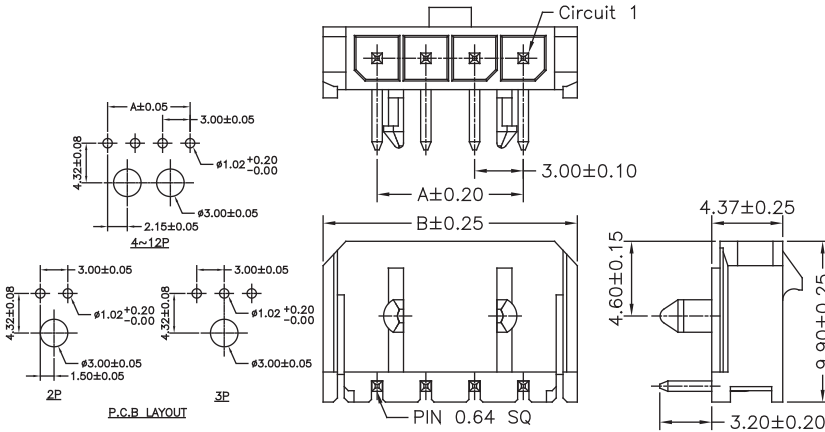


P/N.:5W3000R0-2XXT0BAL-01

No. of Contactss	Dimensions	
	A	B
2x1	---	6.65
2x2	3.00	9.65
2x3	6.00	12.65
2x4	9.00	15.65
2x5	12.00	18.65
2x6	15.00	21.65
2x7	18.00	24.65
2x8	21.00	27.65
2x9	24.00	30.65
2x10	27.00	33.65
2x11	30.00	36.65
2x12	33.00	39.65

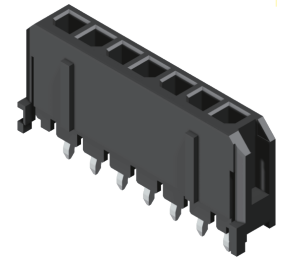
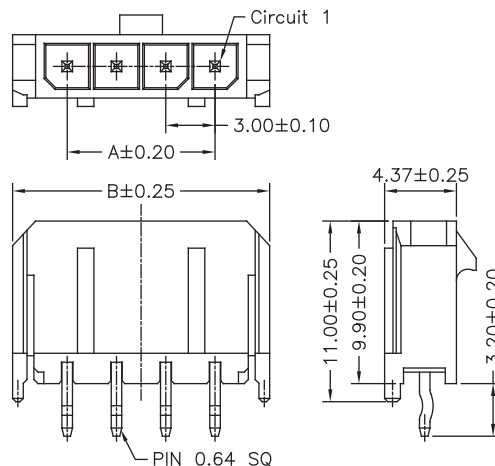


P/N.:5W3000S0-2XXT0BAL-01



P/N.:5W3000R0-1XXT0BAL-01

No. of Contacts	Dimensions	
	A	B
2	3.00	9.65
3	6.00	12.65
4	9.00	15.65
5	12.00	18.65
6	15.00	21.65
7	18.00	24.65
8	21.00	27.65
9	24.00	30.65
10	27.00	33.65
11	30.00	36.65
12	33.00	39.65



P/N.:5W3000S0-1XXT0BAL-01