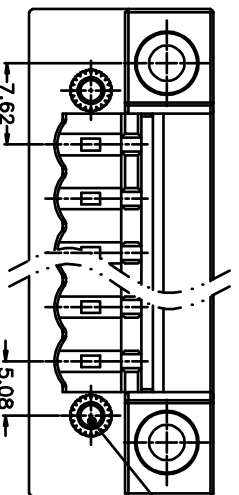
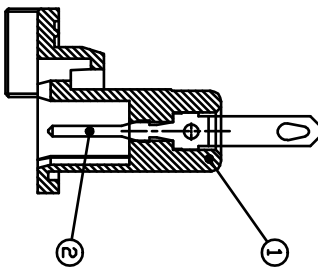
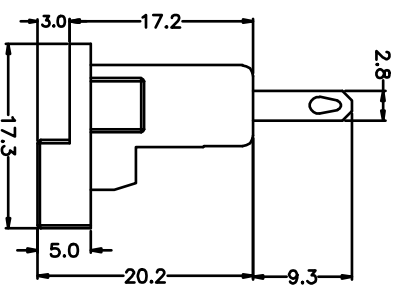
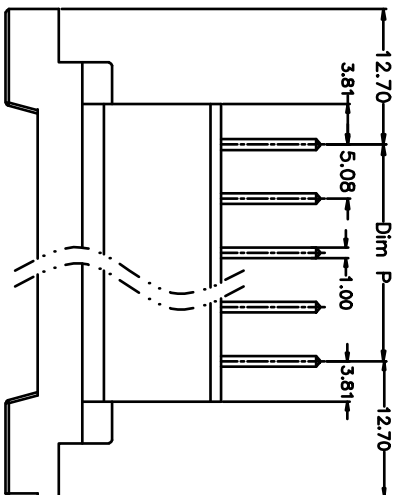
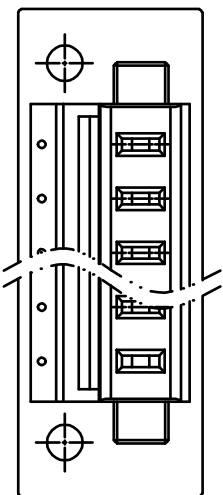


REV.	DESCRIPTION	DATE	DRAWN	APPROVED
A1	DWG.REL	2016/10/7	FANG	YANG



N=Number of Poles
Dim P=(N-1)*5.08
Dim L=(N-1)*5.08+25.4

N	Dim P	Dim L
2~6P	±0.10	±0.15
7~12P	±0.20	±0.20
13~18P	±0.25	±0.30
19~24P	±0.30	±0.40

- Material
 - Housing : PA66, UL94V-0
 - Pin header : Brass, Tin plated
 - Nut : M2.5, Brass

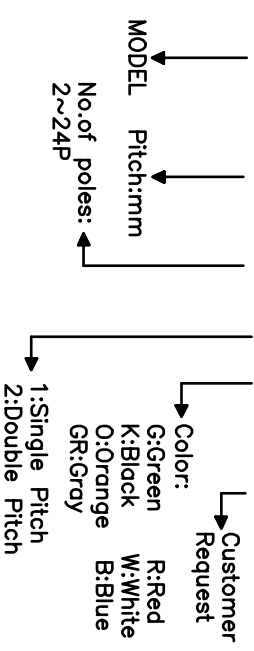
- Electrical

UL	IEC
Rated voltage : 300V	320V
Rated current : 15A	20A
Insulation resistance: 500MΩ/DC500V	
Withstanding Voltage : AC2000V/1min	

- Mechanical
 - Operating temperature: -40°C ~ +105°C
 - Soldering temperature: 250°C ±5/5sec

HOW TO ORDER

KF1024-5.08-XXP-1 X-XXXXXX



GENERAL TOLERANCE ANGLE TOLERANCE

X.	±0.5	X.	±5'
.X	±0.3	.X.	±3'
.XX	±0.1	.XX.	±1'

DRAWING TYPE	CUSTOMER	SHEET	1 OF 1
SCALE	1:1	SHEET	1 OF 1
DRAWING NO.	XP0012016-xxxx		

PROJECTION UNITS TITLE

PROJECTION	mm	TITLE	KF1024-5.08-XXP
SHEET SIZE	A4	SERIES	KF1024

凯峰 慈溪市凯峰电子有限公司
KAIFENG ELECTRONIC CO.,LTD
CIXI KAIFENG ELECTRONIC CO.,LTD