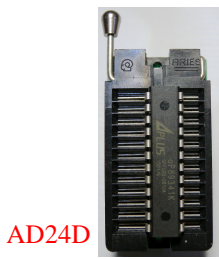
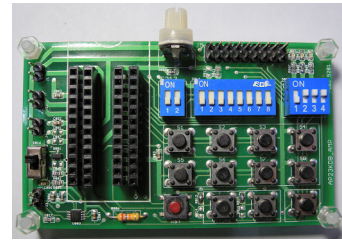


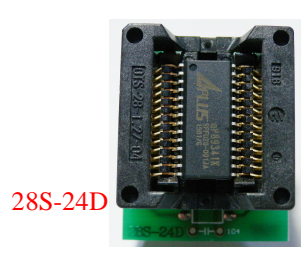
**For aP89xxxK & aP23xxx**

- **PART NO. : aP23KDBAMP**
- **PCB NO. : 5201**
- **PCB SIZE : 87 x 52 mm**
- **Select your required socket connecting to aP23KDBAMP**



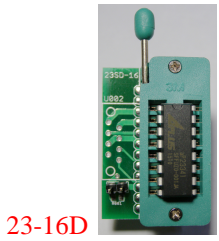
AD24D

Socket for :  
aP89682K DIP24  
aP89341K DIP24  
ap89170K DIP24  
aP89085K DIP24



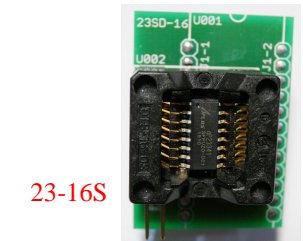
28S-24D

Socket for :  
aP89682K SOP28  
aP89341K SOP28  
aP89170K SOP28  
aP89085K SOP28



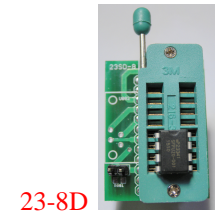
23-16D

Socket for :  
aP23682 DIP16  
aP23341 DIP16  
ap23170 DIP16  
aP23085 DIP16



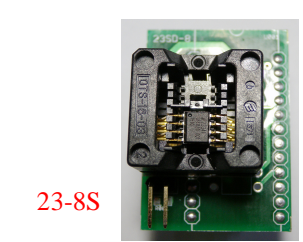
23-16S

Socket for :  
aP23682 SOP16  
aP23341 SOP16  
aP23170 SOP16  
aP23085 SOP16



23-8D

Socket for :  
aP23682 DIP8  
aP23341 DIP8  
ap23170 DIP8  
aP23085 DIP8



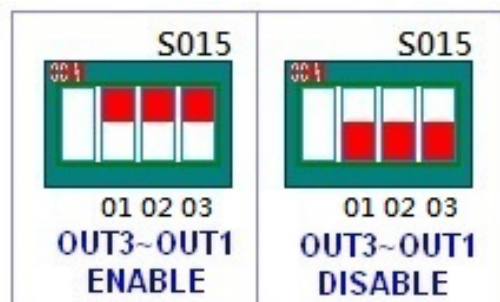
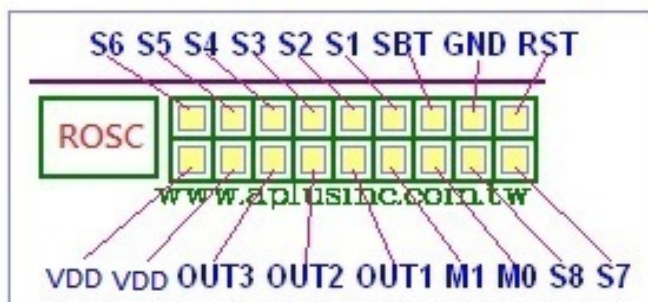
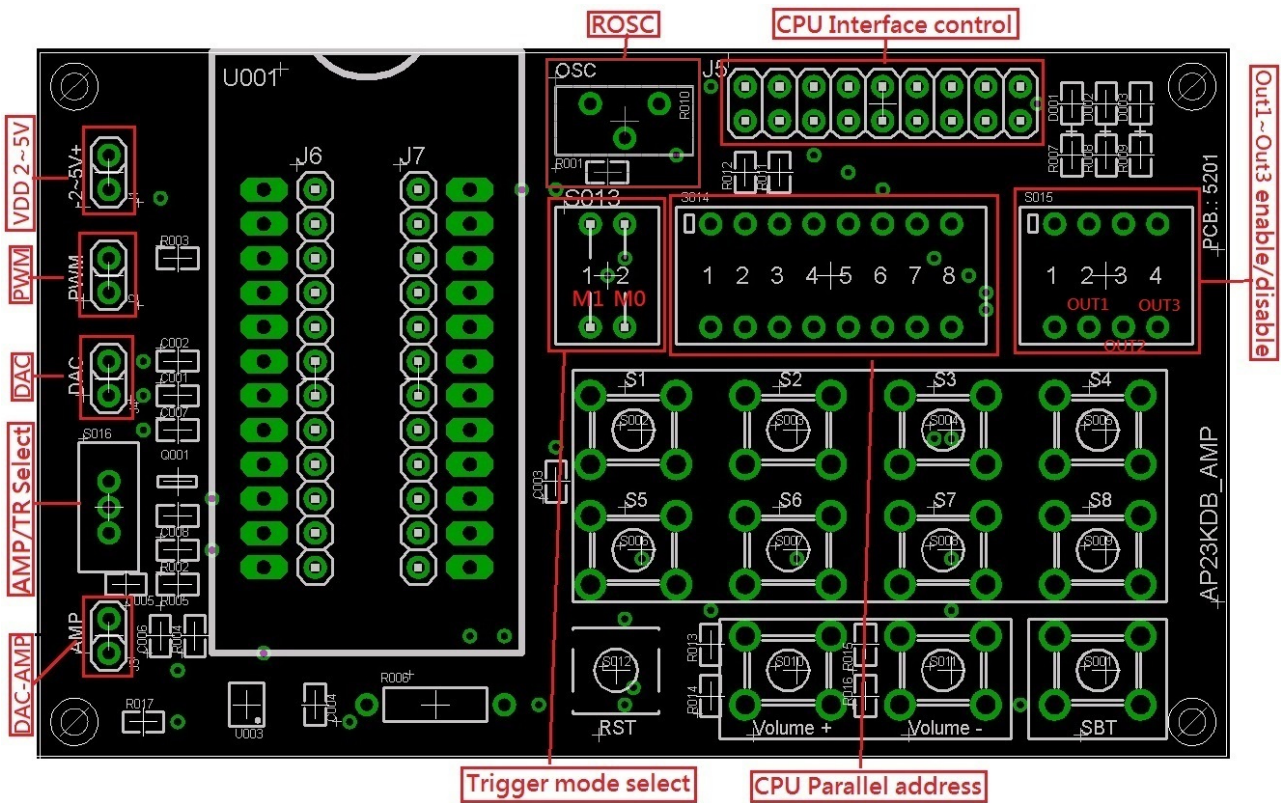
23-8S

Socket for :  
aP23682 SOP8  
aP23341 SOP8  
aP23170 SOP8  
aP23085 SOP8

**Trigger Mode :**

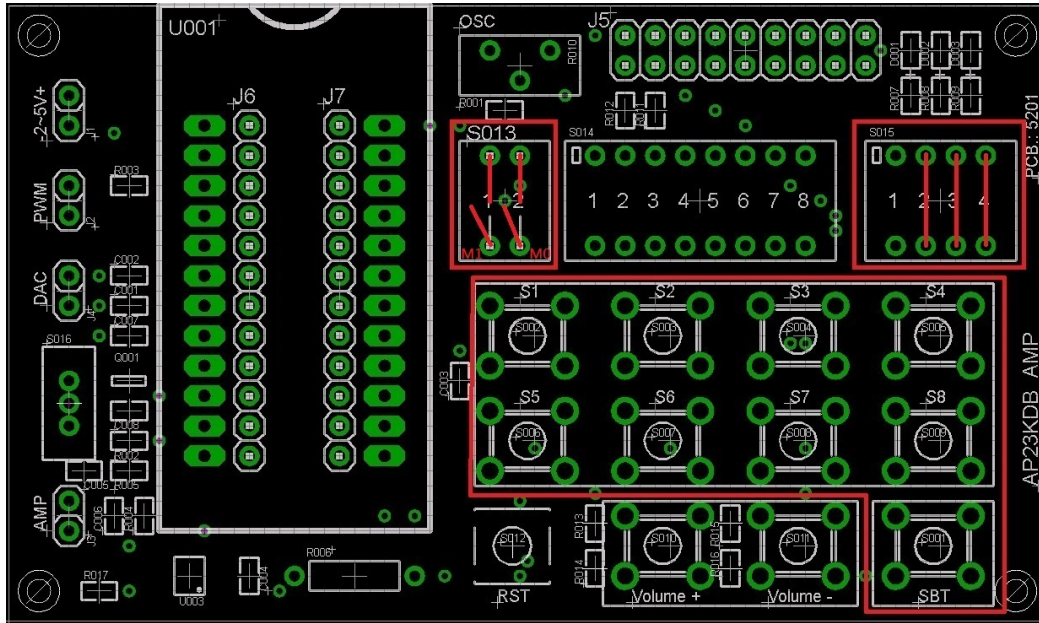
1. **aP89xxxK DIP24/SOP28 :**
  - a. **KEY mode :** S8 ~ S1 & SBT , max. 57 groups
  - b. **CPU Parallel mode :** address --- S8(MSB),S7,S6,S5,S4,S3,S2,S1(LSB), total max. 1024 groups & SBT key voice trigger
  - c. **MP3 mode :** SBT - Play/Pause, S1- Backward, S2- Forward, S3- Stop, S4- Reset
  - d. **SPI mode :** S1(CS), S2(SCK), S3(DI)
  - e. **I2C mode :** S2(SCK), S3(DI)
  - f. **aP89 mode 1:** Same as aP89341 CPU serial mode
  - g. **aP89 mode 2 :** aP89mode1 with extra volume control or Crystal Rosc setting
2. **aP23xxx DIP16/SOP16 :**
  - a. **KEY mode :** S4 ~ S1 , max. 13 groups , SBT sequential max. 1024 groups
  - b. **CPU Parallel mode :** address --- S4(MSB), S3,S2,S1(LSB), total max. 16 groups & SBT key voice trigger
  - c. **MP3 mode :** SBT - Play/Pause, S1- Backward, S2- Forward, S3- Stop, S4- Reset
  - d. **SPI mode :** S1(CS), S2(SCK), S3(DI)
  - e. **I2C mode :** S2(SCK), S3(DI)

3. aP23xxx DIP8/SOP8 :
  - a. **KEY mode** : S2 ~ S3 , max. 3 groups , SBT sequential max. 1024 groups
  - b. **CPU Parallel mode** : address --- S3(MSB)~S2(LSB), total max. 4 groups & SBT key voice trigger
  - c. **MP3 mode** : SBT – Play/Pause, S2 – Forward, S3 – Stop
  - d. **I2C mode** : S2(SCK), S3(DI)



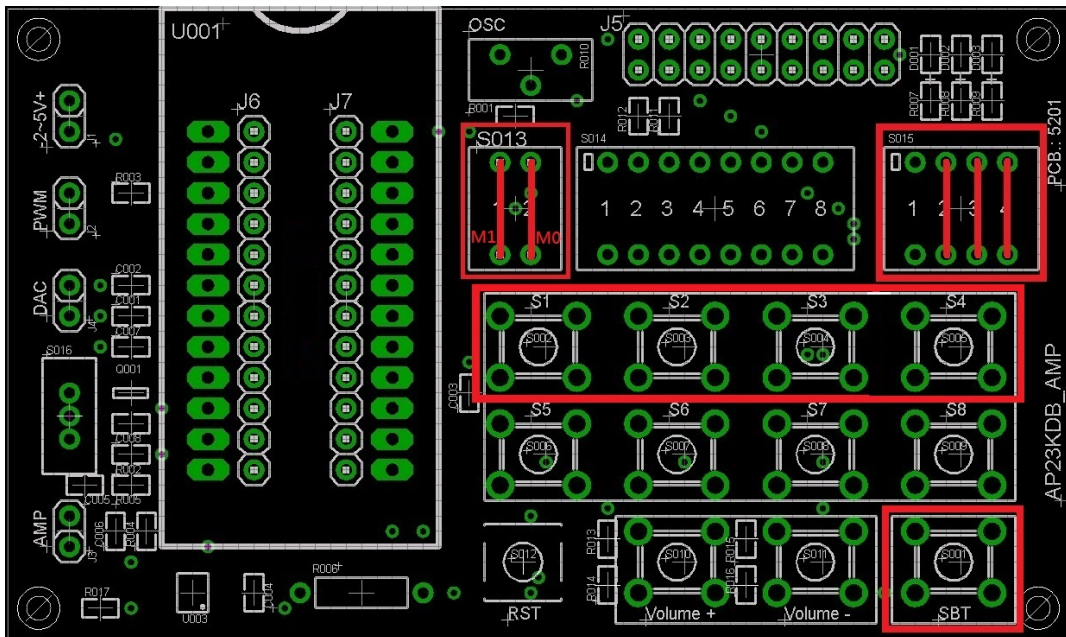
**1. KEY TRIGGER : S013 = [ M0 = 0 , M1 = 0 ]**

- USE KEY : S1,S2,S3,S4,S5,S6,S7,S8;total max. 57 sections
- SBT KEY : ONE KEY SEQUENTIAL TRIGGER up to 1024 groups
- S015(O3-O2-O1) : ENABLE OUT3,OUT2,OUT1



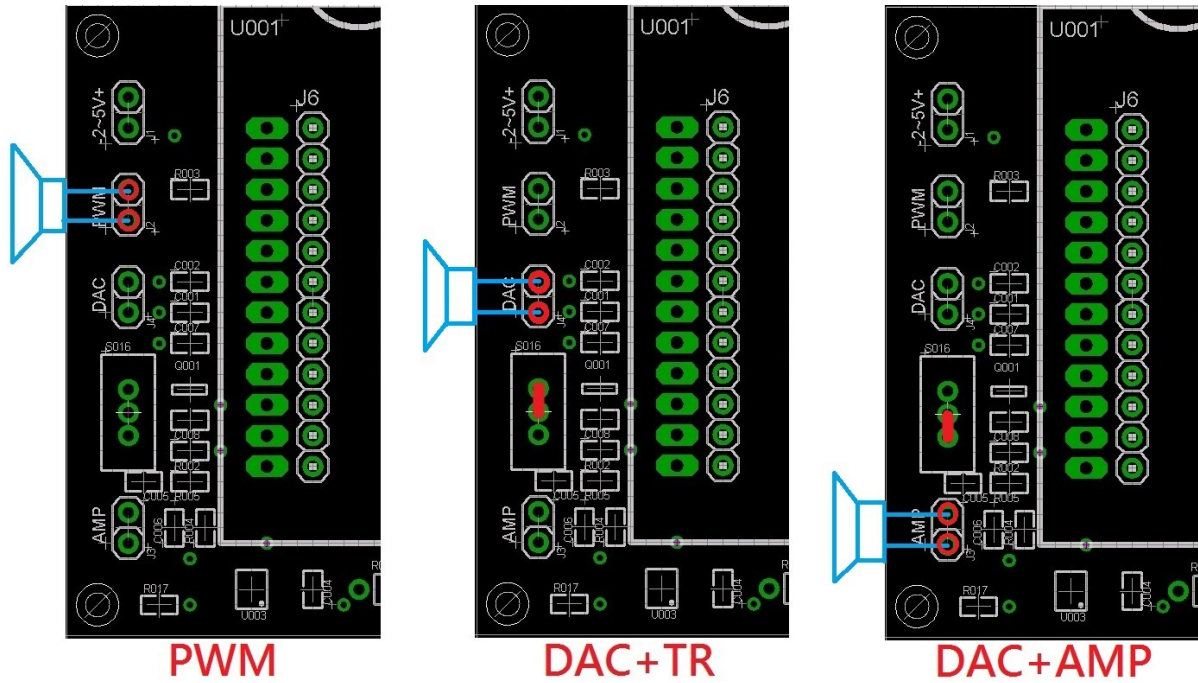
**2. MP3 Mode : S013 = [ M0 = 1 , M1 = 1 ]**

- USE KEY : SBT - Play/Pause, S1- Backward, S2- Forward, S3- Stop, S4- Reset
- S015(O3-O2-O1) : ENABLE OUT3,OUT2,OUT1



### 3. Speaker mode select

- PWM & DAC-TR & DAC-AMP



- For more details , please refer to our aP89xxxK & aP23xxx spec :