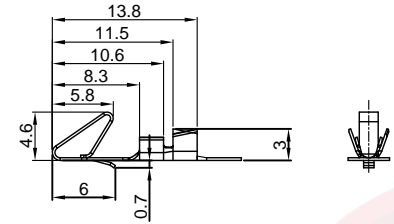


The information provided herein is from CONNELY Electronic Co., Ltd. and is confidential. Any disclosure to a party other than the recipient is prohibited. The intellectual properties and its rights contained herein, including but not limited to, trademarks, patents, copyrights, trade secrets, and technical know-how, are owned exclusively by CONNELY or its affiliates. Unauthorized use, reproduction, or distribution of this information is strictly prohibited. CONNELY reserves the right to make changes to this information without notice and to enforce its intellectual property rights at its own discretion, failures or delays to exercise such rights does not constitute a waiver of such rights.

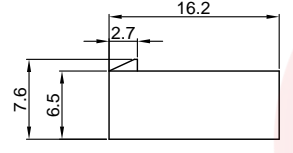
REV.	DESCRIPTION	DRAWN	CHECKED	APPROVED
A	NEW RELEASE	LL 10/09/06		LJC 10/09/06
D	DRAWING UPDATE	JLZ 05/04/18'		

Female Terminal

T-DS1072- S C 6 0 0
 Contact Plating
 6: Tin

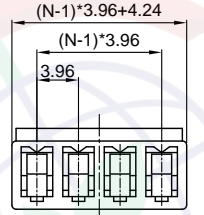


Female Housing



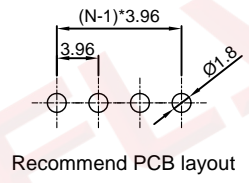
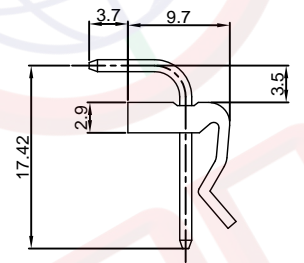
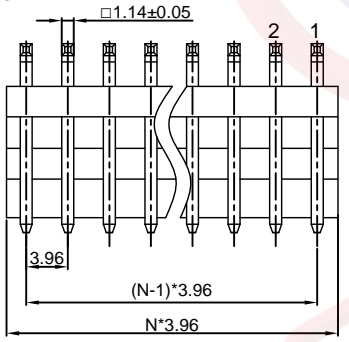
Female Terminal

Wire Range	O.D of Wire	
Section Area (mm) ²	AWG#	mm
0.2-0.75	24-18	1.3-2.8

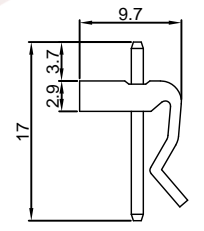
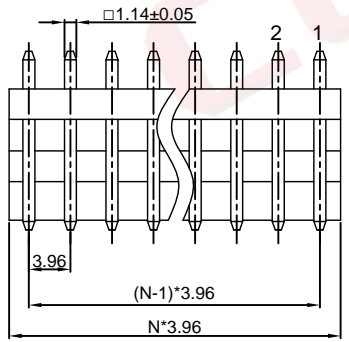


I-DS1072- S C T 0 X
 No. of contact
 02-13

Male Right Angle



Male V/T TYPE



N=No. of contacts

NOTES:

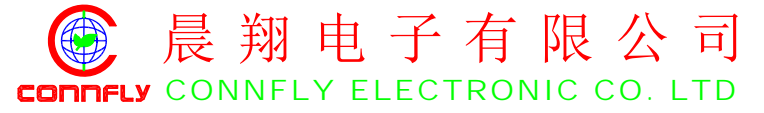
- MAIN SPECIFICATIONS
 - Housing material: NYLON 66
 - Wire range: AWG#24-#18
 - Rated voltage: 250V
 - Rated current: 7A(18AWG)
 - Contact resistance: 30mΩ Max
 - Insulation resistance: 1000MΩ Min
 - Withstanding voltage: 1000V, AC 1 minute
 - Temperature range: -25 ~ +85°C
 - Recommend PC board thickness: 1.6mm
- PRODUCT NUMBER CODE:

DS1072 - X X X X X

 - Contact Plating
6: Tin
8: Full gold flash
 - Housing Color
T: Transparent
 - Mounting type
R: Right Angle
V: V/T type
 - Connector type
M: Male
 - No. of contact
2 to 13

GENERAL TOLERANCE		ANGLE TOLERANCE		PROJECTION		TITLE
X.	±0.60	X.	±5°	UNITS	mm	P.C.B CONNECTOR Pitch 3.96mm
.X	±0.38	.X	±3°	SHEET SIZE	A4	
.XX	±0.25	.XX	±2°	SERIES	DS1072 SERIES	

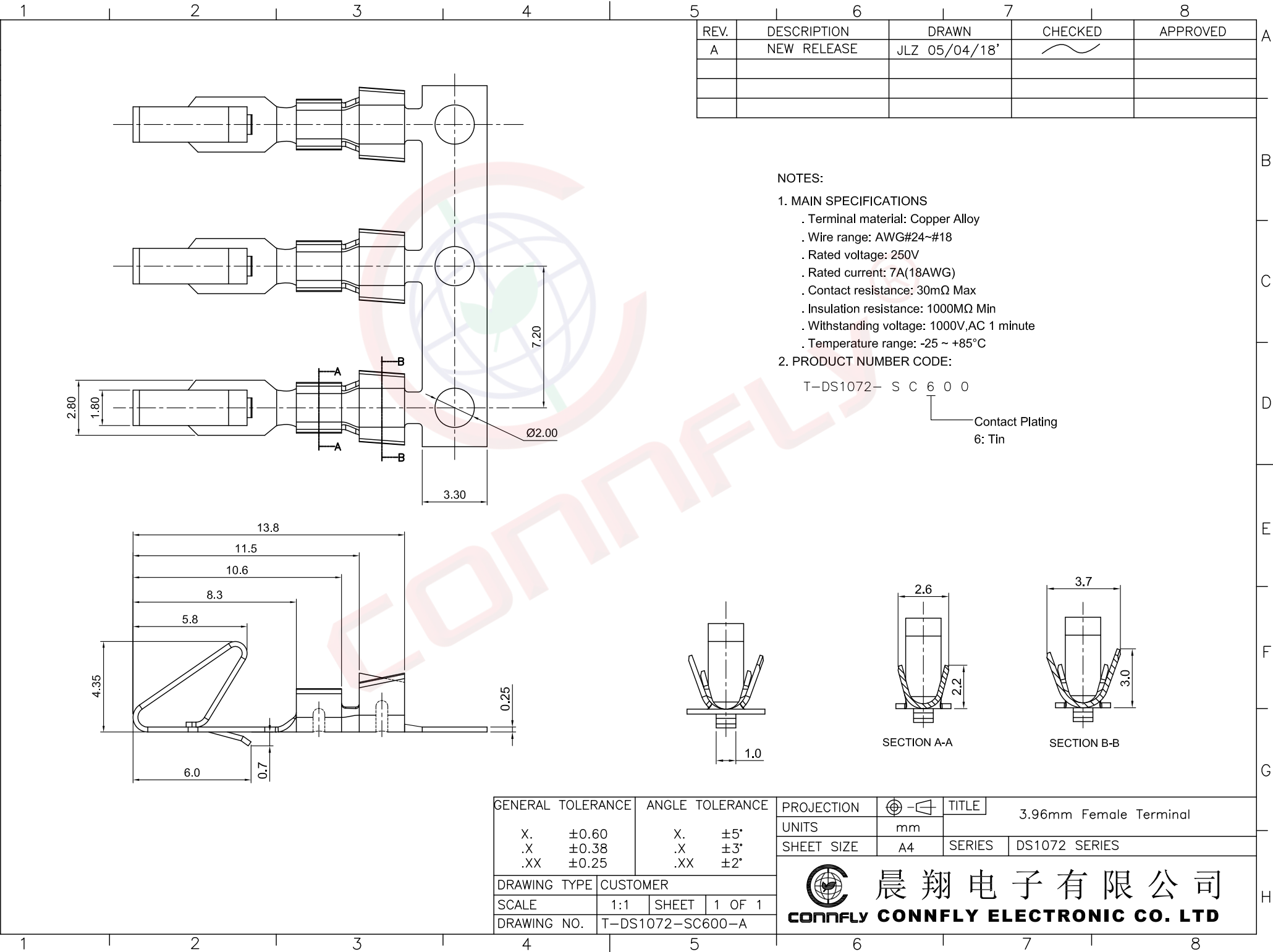
DRAWING TYPE	CUSTOMER		
SCALE	1:1	SHEET	1 OF 1
DRAWING NO.	C-DS1072-XXXXX-D		



Dept Qty
 DC 1
 ED 1
 IE 1
 ISO 1
 PD 1
 R&D 1
 SD 1
 QA 1
 QC 1
 QF 1

1 2 3 4 5 6 7 8

Dept
 Qty
 DC 1
 ED 1
 IE 1
 ISO 1
 PD 1
 R&D 1
 SD 1
 QA 1
 QC 1
 QF 1
 The information provided herein is from CONNELY Electronic Co., Ltd. and is confidential. Any disclosure to a party other than the recipient is prohibited. The intellectual properties and its rights contained herein, including but not limited to, trademarks, patents, copyrights, trade secrets, and technical know-how, are owned exclusively by CONNELY or its affiliates. Unauthorized use of this information in any format or manner. CONNELY may enforce its intellectual property rights at its own discretion; failures or delays to exercise such rights does not constitute a waiver of such rights.



REV.	DESCRIPTION	DRAWN	CHECKED	APPROVED
A	NEW RELEASE	JLZ 05/04/18'		

- NOTES:
- MAIN SPECIFICATIONS
 - Terminal material: Copper Alloy
 - Wire range: AWG#24~#18
 - Rated voltage: 250V
 - Rated current: 7A(18AWG)
 - Contact resistance: 30mΩ Max
 - Insulation resistance: 1000MΩ Min
 - Withstanding voltage: 1000V,AC 1 minute
 - Temperature range: -25 ~ +85°C

2. PRODUCT NUMBER CODE:

T-DS1072- S C 6 0 0

└── Contact Plating
6: Tin

GENERAL TOLERANCE		ANGLE TOLERANCE		PROJECTION	TITLE
X.	±0.60	X.	±5°		3.96mm Female Terminal
.X	±0.38	.X	±3°	mm	
.XX	±0.25	.XX	±2°	A4	SERIES DS1072 SERIES
DRAWING TYPE		CUSTOMER		晨翔电子有限公司 CONNELY CONNELY ELECTRONIC CO. LTD	
SCALE		1:1	SHEET 1 OF 1		
DRAWING NO.		T-DS1072-SC600-A			