

## FFC/FPC Series

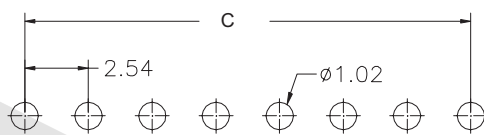
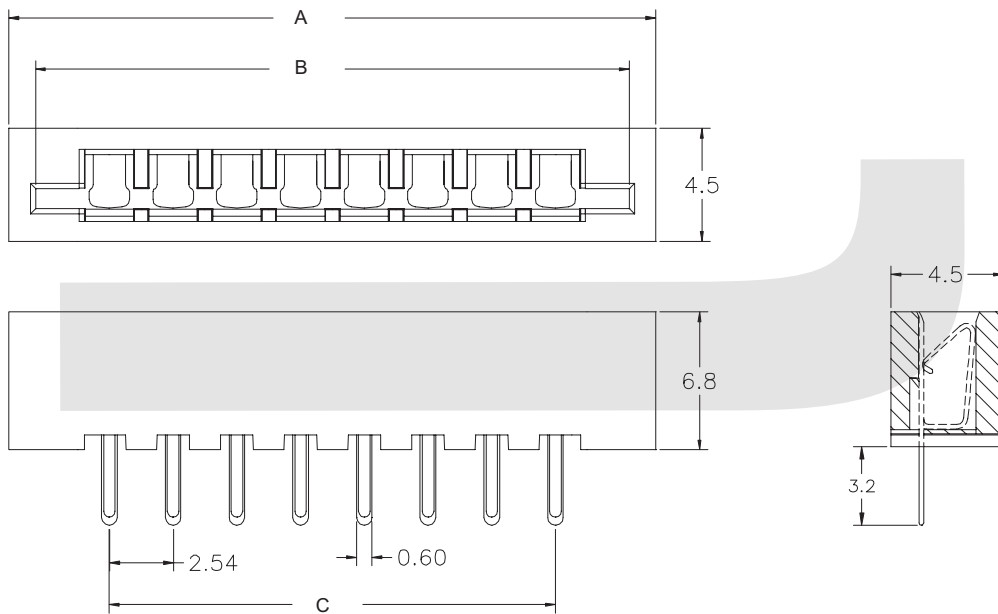
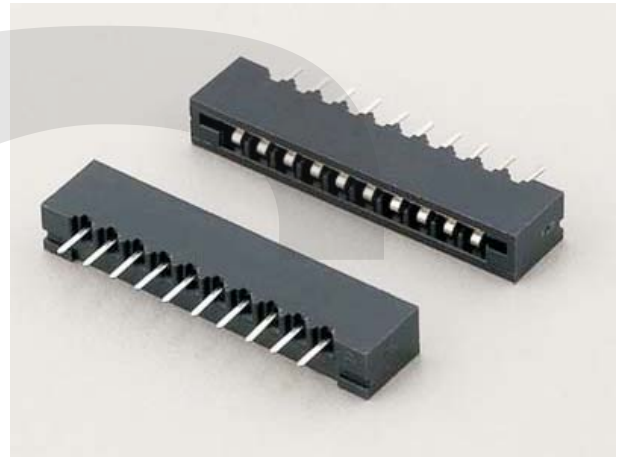
### KLS1-219 FFC/FPC CONNECTOR 2.54mm Straight Pin Type

#### Electrical Characteristics:

Current Rating: 1 AMP  
 Insulator Resistance: 5000MΩmin. at DC 500V  
 Contact Resistance: 20mΩmax. at DC 100mA  
 Operating Temperature: -45°C~+105°C

#### Material:

Housing: 30% Glass filled PBT UL94V-0  
 Contacts: Phosphor Bronze  
 Plating: Tin plated: 100u" over 50u" nickel



P.C.B Layout

Position	3 Thru 21
Dimension	
A±0.20	2.54 × (N+2)
B±0.15	2.54 × N+2.68
C±0.15	2.54 × (N-1)

## ORDER INFORMATION

Product No.: KLS1-219-XX-S

Pos. No. \_\_\_\_\_ Tail Style: S=Straight Pin R=Right Pin  
 FFC/FPC CONNECTOR 2.54mm Series \_\_\_\_\_ Number of Contacts \_\_\_\_\_

## FFC/FPC Series

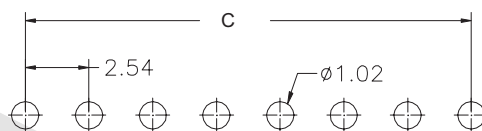
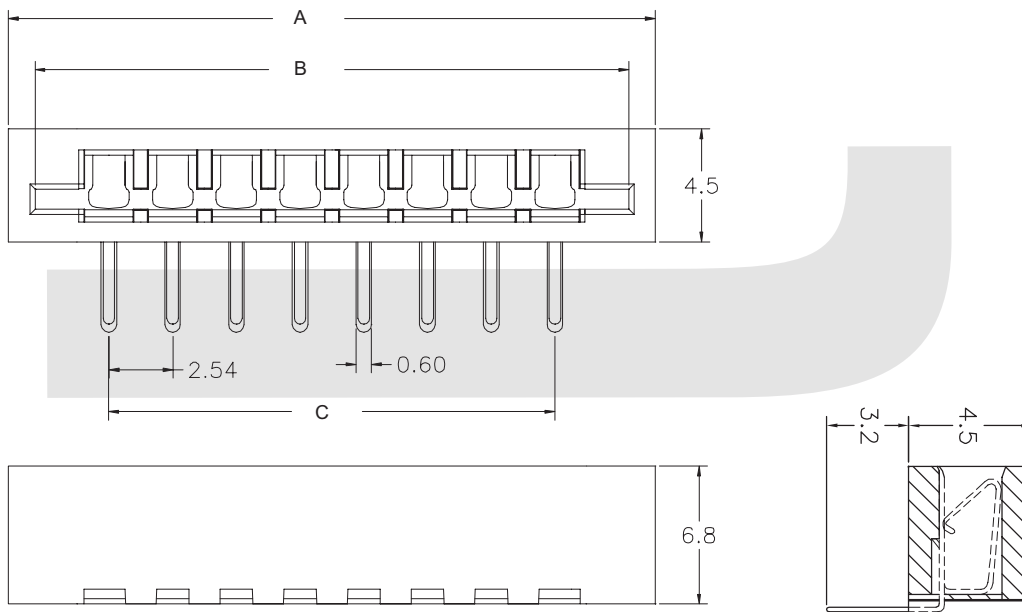
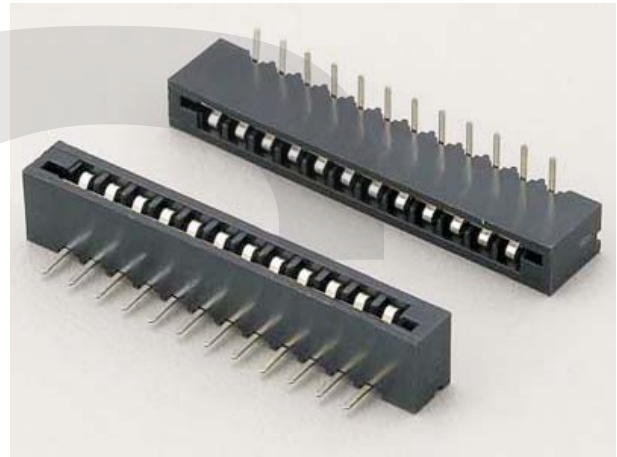
### KLS1-219 FFC/FPC CONNECTOR 2.54mm Right Pin Type

#### Electrical Characteristics:

Current Rating: 1 AMP  
 Insulator Resistance: 5000MΩmin. at DC 500V  
 Contact Resistance: 20mΩmax. at DC 100mA  
 Operating Temperature: -45°C~+105°C

#### Material:

Housing: 30% Glass filled PBT UL94V-0  
 Contacts: Phosphor Bronze  
 Plating: Tin plated: 100u" over 50u" nickel



P.C.B Layout

Position	3 Thru 21
Dimension	
A±0,20	2.54 × (N+2)
B±0,15	2.54 × N+2.68
C±0,15	2.54 × (N-1)

## ORDER INFORMATION

Product No.: KLS1-219-XX-R

Pos. No. \_\_\_\_\_ Tail Style: S=Straight Pin R=Right Pin  
 FFC/FPC CONNECTOR 2.54mm Series \_\_\_\_\_ Number of Contacts \_\_\_\_\_