

Constant Current LED Driver

220-240 VAC



Approval Marks



Certified

EN 61347-1:2008+A1:2011
 EN 61347-2-13:2006
 EN 62384:2006+A1:2009

Electronic

Parameter	Conditions	Min	Nom	Max	Unit
I/P Voltage Range		198	220-240	264	Vac
Input Frequency		-	50-60	-	Hz
Input current	LCC30W500 @230V	-	120	-	mA
	LCC30W700 @230V	-	140	-	mA
	LCC30W900 @230V	-	165	-	mA
	LCC30W1000-LCC30W1200 @230V	-	170	-	mA
	LCC30W1400 @230V	-	180	-	mA
Output Voltage Range	LCC30W500	35	-	45	Vdc
	LCC30W700	28	-	38	Vdc
	LCC30W900	24	-	34	Vdc
	LCC30W1000	24	-	32	Vdc
	LCC30W1200	20	-	26	Vdc
	LCC30W1400	18	-	24	Vdc
Output Current Range	LCC30W500	475	500	525	mA
	LCC30W700	665	700	735	mA
	LCC30W900	855	900	945	mA
	LCC30W1000	950	1000	1050	mA
	LCC30W1200	1140	1200	1260	mA
	LCC30W1400	1330	1400	1470	mA
Rated Output power	LCC30W500	17.5	-	22.5	W
	LCC30W700	19.6	-	26.6	W
	LCC30W900	21.6	-	30.6	W
	LCC30W1000	24	-	32	W
	LCC30W1200	24	-	31.2	W
	LCC30W1400	25.2	-	33.6	W
THD		-	-	20	%
Efficiency	Full Load	82	-	-	%
Standby Power		-	-	1	W
Rise Time		-	-	500	ms
Start-up Delay		-	-	500	ms
Ripple Current	peak to peak @ full load	-	40	-	%
Output Current Overshoot		-	-	20	%
Power Factor	Full Load	0.90	0.95	-	-
Protection	Over-voltage Protection	Auto recovery			
	Open-circuit Protection	Max output voltage at no load			
	Short-circuit Protection	Auto recovery			
RoHS Standard		Compliant			

Constant Current LED Driver

220-240 VAC



Approval Marks



Certified

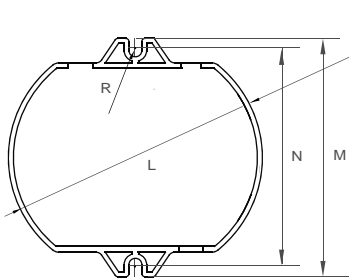
EN 61347-1:2008+A1:2011
 EN 61347-2-13:2006
 EN 62384:2006+A1:2009

Electronic

Parameter	Conditions	Min	Nom	Max	Unit
External Operating Temperature		-20	-	+50	°C
Operating humidity range		10	-	95	%
Storage Temp. range		-40	-	+85	°C
Case hot spot Temperature(TC)	LCC30W500,LCC30W700,LCC30W900	-	-	+75	°C
at External Operating Temperature 40°C	LCC30W1000,LCC30W1200,LCC30W1400	-	-	+80	°C
Lifetime	at Max Case hot spot Temperature	-	50,000	-	hrs
Case Dimensions	LxMxH	79.8	78.1	25.4	mm

Physical

Parameter



L : 79.8 mm H : 25.4 mm
 M : 78.1 mm R : 2 mm
 N : 70.1 mm

Tolerance : $\geq 0 \sim 100 \geq \pm 0.5\text{mm}$
 $100 \geq \pm 1 \text{ mm}$

Terminal Block : Hard Wires : PRI : Brown / Blue 1015#18,158mm
 SEC : Red / Black 1332#18,160mm

Housing Material : Polycarbonate

: Lead-Free, Comply With RoHS

Label : Surface Print

Wiring Diagram

