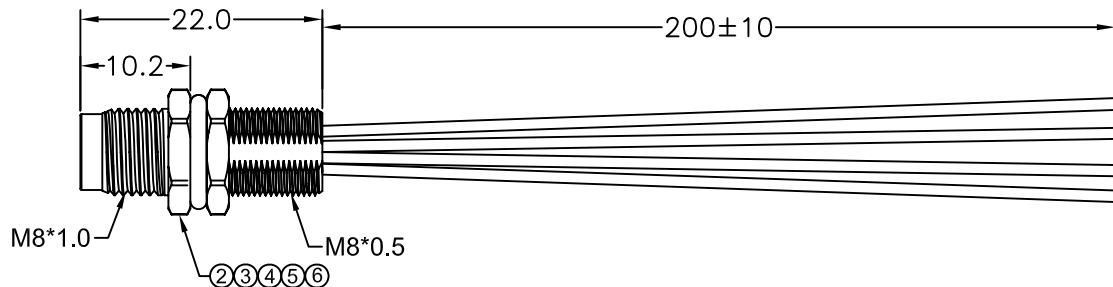
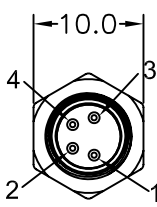


T/NO.			

REVISIONS			
REV.	DESCRIPTION	DATE	REVISED BY
S0	CREATED DRAWING	2015/04/08	SUN

P1

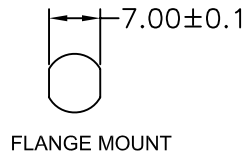


P2

Detailed Product Description:
 Waterproof connector rating is IP67/IP68
 Protected from dust and water during immersion,
 resistant to many oils and chemical etc

Electrical character
 Rating voltage: 30V AC/DC ,
 Insulation resistance: >100MΩ
 Rating current : 3A
 Contact resistance ≤10mΩ

Other Specification
 Contact PIN: Brass with Gold plating.
 Coupling nut/screw: Brass with nickel plating
 Insulation plastic: PA66+GF
 Degree of protection: IP67/IP68
 Operating temperature: -25° C ~ +85° C



*ALL MATERIALS ARE RoHS COMPLIANT.

WIRE LIST

P1	COLOR	P2
1	BROWN	OPEN
2	WHITE	
3	BLUE	
4	BLACK	

ITEM	PART NO.	SPECIFICATION	Q'TY	UNIT
⑥	NU00004	M8*0.5 BRASS PLATED NI NUT L*W=2.0*10mm	1	PCS
⑤	GL00002	BLACK EPOXY RESIN	1	g
④	OR00013	M8 Green Viton circle φ 7.00*1.0mm	1	PCS
③	WK00025	M8 Nickel plated brass nut rear panel mount male shell	1	PCS
②	PD000024	M8 A Coding 4pin male connector	1	SET
①	N/A	NO-UL 24AWG HOOK UP WIRE ,BROWN,WHITE,BLUE,BLACK	1	SET

		TITLE		PROJECTION:		 TOLERANCES UNLESS NOTED:
		M8 4P/M REAR MOUNT CABLE				
DRAWN BY:		DATE:		UNITS: mm		
CHECKED BY:		DATE:		SCALE: NONE		
SAELS BY:		DATE:		SIZE:		
APPROVED BY:		DATE:		SHEET:		