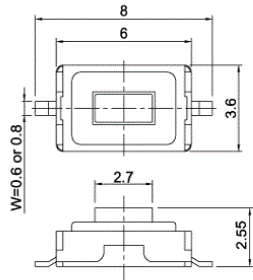


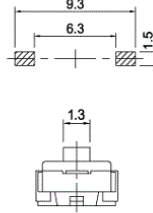


IT-1181

IT-1181 W=0.6mm
IT-1181A W=0.8mm



P.C.B. LAYOUT



CIRCUIT DIAGRAM

IT-1181X

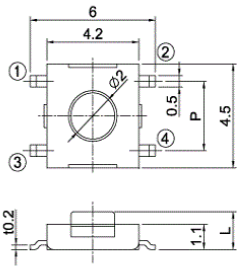
TERMINAL (W)	
□	0.6
A	0.8

Rating : 50mA 12V DC Max.
Travel : 0.25±0.1mm.
Contact resistance : 100mΩ Max.
Operating force : 160±30g,
250, 500±50g.
Life : 160g : 50,000 Cycles Min.
250g, 500g : 30,000 Cycles Min.

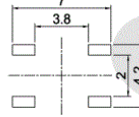


IT-1127

IT-1127 P=3.0mm
IT-1127-5 P=3.5mm



P.C.B. LAYOUT



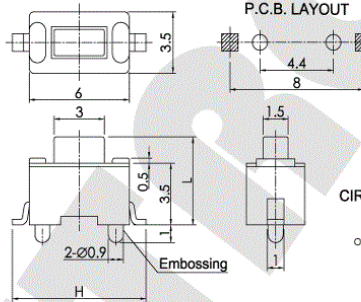
IT-1127XXX

TERMINAL (P)	EMBOSSING CASE	STEM(L)
□	W/O	□ 1.5
-5	W/	A 4.3

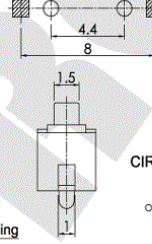
Rating : 50mA 12V DC Max.
Circuit : SPST.
Travel : 0.2±0.1mm.
Contact resistance : 100mΩ Max.
Operating force : 160, 250±50g.
Life : 100,000 Cycles Min.



IT-1101NE



P.C.B. LAYOUT



IT-1101XXX

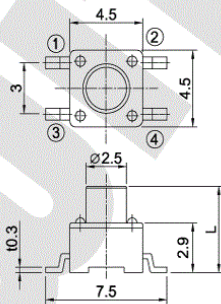
EMBOSSING CASE	TERMINAL (H)	STEM(L)
□	W/	E 8.0
N	W/O	S 10
		S9 9.0

Rating : 50mA 12V DC.
Travel : 0.25±0.1mm.
Contact resistance : 100mΩ Max.
Operating force : 130, 160, 250±50g.
Life : 130, 160g : 50,000 Cycles Min.
250g : 30,000 Cycles Min.

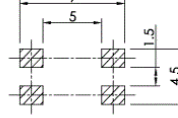


IT-1109S

□4.5



P.C.B. LAYOUT



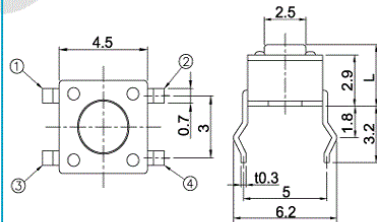
MODEL NO.	STEM(L)
IT-1109S	3.8
IT-1109SA	7.0

Rating : 50mA 12V DC.
Travel : 0.25±0.1mm.
Contact resistance : 100mΩ Max.
Operating force : 160, 250±50g.
Life : 50,000 Cycles Min.

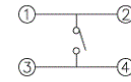


IT-1109

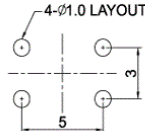
□4.5



CIRCUIT DIAGRAM



P.C.B. LAYOUT



MODEL NO.	STEM(L)
IT-1109	3.8
IT-1109A	7.0

Rating : 50mA 12V DC.
Travel : 0.25±0.1mm.
Contact resistance : 100mΩ Max.
Operating force : 160±30g,
250±50g.
Life : 160g : 50,000 Cycles Min.
250g, 500g : 30,000 Cycles Min.