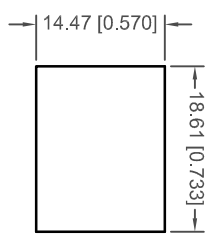
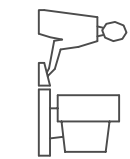


TOLERANCE UNLESS OTHERWISE SPECIFIED IN MM:	ANGLE
0	3°
± 0.50	
± 0.38	
0.00	
± 0.25	
0.000	
± 0.10	

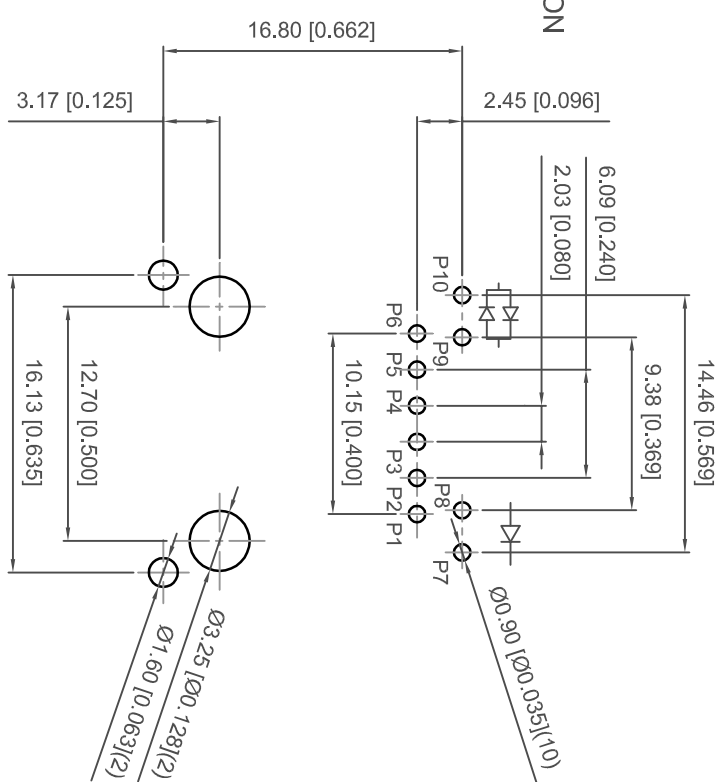
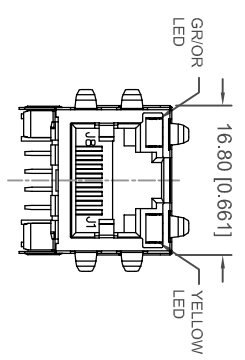
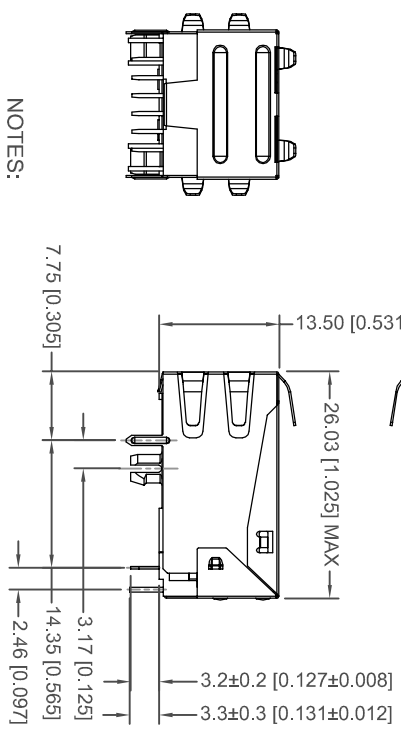
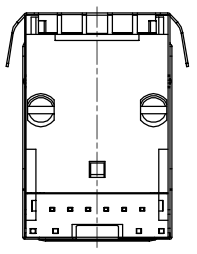
THIS IS A C.A.D. GENERATED DRAWING
DO NOT MAKE MANUAL REVISIONS TO MASTER.

ISSUE NUMBER
ORIGINAL

1



RECOMMENDED
PANEL CUTOUT DIMENSION



RECOMMENDED P.C.B. LAYOUT

NOTES:
1. MATERIALS:
HOUSING: THERMOPLASTIC PBT, UL 94V-0, COLOR: BLACK
SHIELD: BRASS WITH NICKEL PLATING
CONTACTS: COPPER ALLOY PLATED WITH GOLD PLATING AND TIN IN SOLDER AREA

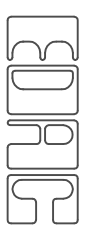
PART NO
A63-112-271P424 GOLD PLATING THICKNESS
A63-112-271P424 GOLD FLASH PLATING
A63-112-271P424 15 MICRO INCHES OF GOLD
A63-112-271P424 30 MICRO INCHES OF GOLD

2. OPERATING TEMPERATURE: -40°C TO +85°C
3. STORAGE TEMPERATURE: -40°C TO +85°C
4. MATE WITH MODULAR PLUG CONFORMING TO FCC PART 68, SUBPART F.
5. RECOMMENDED TEMPERATURE FOR WAVE SOLDERING IS 260°C MAX, 10 SEC MAX
6. DIMENSION: MM [INCHES]

RJ45 MAGNETIC JACK WITH LED, 6P, 8C
SHIELDED, 10/100 Mbps - 4 Core, FILTER



THIS SERIES FULLY CONFORMS TO THE
EUROPEAN UNION DIRECTIVES 2002/95/EC
AND 2002/96/EC FOR ROHS COMPLIANCY.



EDAC INC
TORONTO, ONTARIO
CANADA

YOUR CONNECTION TO QUALITY & SERVICE

THESE DRAWINGS AND SPECIFICATIONS
ARE THE PROPERTY OF EDAC INC. AND
SHALL NOT BE REPRODUCED OR COPIED
OR USED AS THE BASIS FOR THE
MANUFACTURE OR SALE OF APPARATUS
WITHOUT WRITTEN PERMISSION.

ACAD REFERENCE NO.: A63-112-271P424

DRAWN: R.STA.MONICA DATE: JUNE.05/2014

CHECKED: DATE:

PART NUMBER

SEE NOTE

SHEET 1 OF 2

DRAWING NUMBER

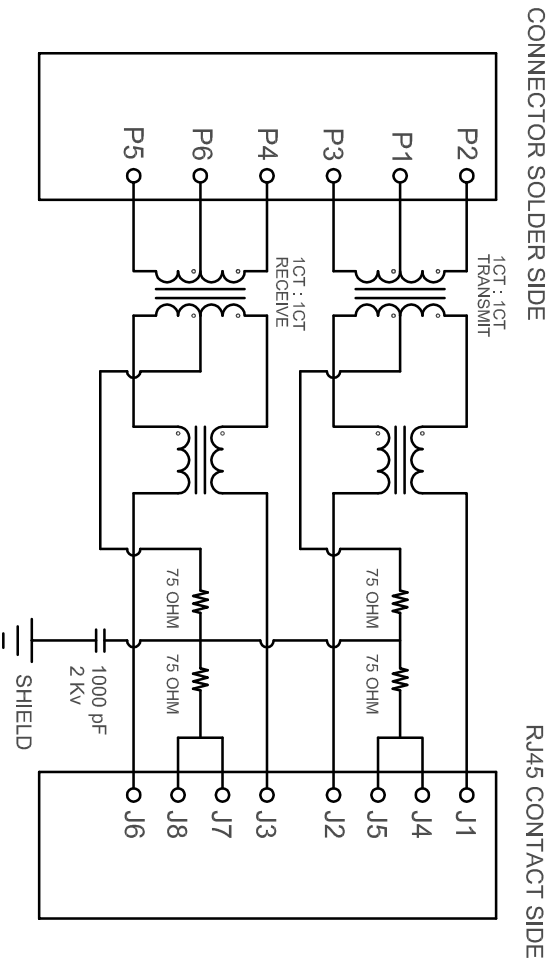
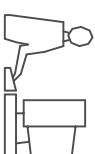
A63-112-271P424

ISSUE

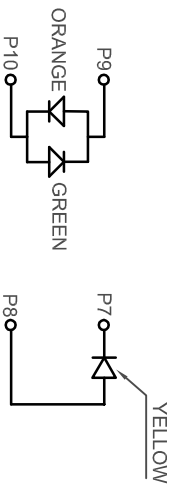
1

ELECTRICAL CIRCUIT:

THIS IS A C.A.D. GENERATED DRAWING
DO NOT MAKE MANUAL REVISIONS TO MASTER.



LED CIRCUIT:



LED SPECIFICATIONS (WITH FORWARD CURRENT OF 20 mA)			
STANDARD LED	WAVELENGTH	FORWARD V (MAX)	TYP
YELLOW	590 nm	2.5 V	2.1 V
ORANGE	605 nm	2.5 V	2.0 V
GREEN	565 nm	2.4 V	2.2 V

- TEST NOTES:(25±5°C)
- 1.TR:(100KHz,0.1V);
 - 2.LX:(100KHz,100mV,8mA, DC Bias)
 - 3.DC RESISTANCE:
PINS: (P2,P3),(J1-J2)=1:1±5%
PINS: (P4-P5):(J3-J6)=1:1±5%
 4. ISOLATION: PHY SIDE TO LINE SIDE: 1500V AC OR 2250V DC
 - 5.INSERTION LOSS:
-1.2dB MAXIMUM AT 1MHZ TO 100MHZ;
 - 6.RETURN LOSS:
-16dB MINIMUM AT 1MHZ TO 30MHZ;
-12dB MINIMUM AT 30MHZ TO 60MHZ
-10dB MINIMUM AT 60MHZ TO 80MHZ
 - 7.CROSS TALK:
-30dB MINIMUM AT 1MHZ TO 100MHZ
 - 8.COMMON TO COMMON MODE ATTENUATION:
-30dB TYPICAL AT 30MHZ TO 100MHZ

RJ45 MAGNETIC JACK WITH LED, 6P, 8C
SHIELDED, 10/100 Mbps - 4 Core, FILTER

ACAD REFERENCE NO.: A63-112-271P424	
DRAWN: R.STA.MONICA	DATE: JUNE.05/2014
CHECKED:	DATE:
PART NUMBER	SHEET 2 OF 2
SEE NOTE	ISSUE
DRAWING NUMBER	1
A63-112-271P424	



THIS SERIES FULLY CONFORMS TO THE
EUROPEAN UNION DIRECTIVES 2002/95/EC
AND 2002/96/EC FOR ROHS COMPLIANCY.



EDAC INC
TORONTO, ONTARIO
CANADA

YOUR CONNECTION TO QUALITY & SERVICE

THESE DRAWINGS AND SPECIFICATIONS
ARE THE PROPERTY OF EDAC INC. AND
SHALL NOT BE REPRODUCED OR COPIED
OR USED AS THE BASIS FOR THE
MANUFACTURE OR SALE OF APPARATUS
WITHOUT WRITTEN PERMISSION.