

1

2

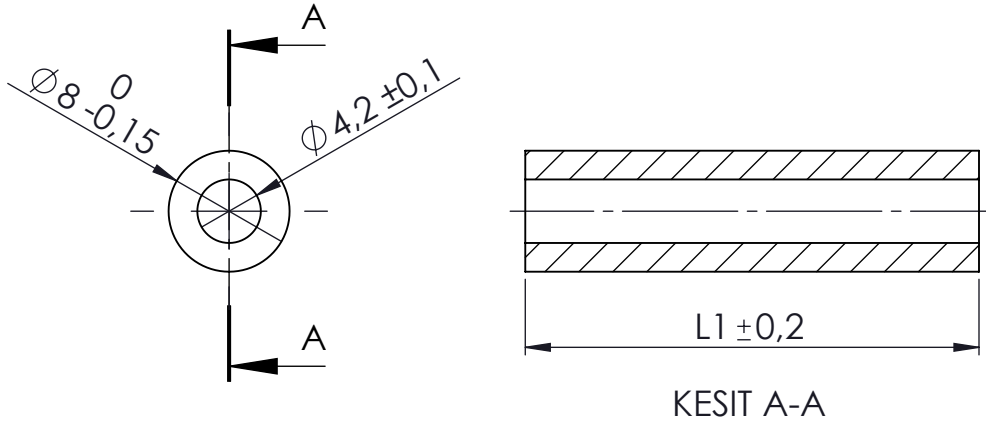
3

4

A

B

C



KESIT A-A

D

E

F

Part No

L1 (mm)

Part No

L1 (mm)

YP-905

5

YP-918

18

YP-906

6

YP-919

19

YP-907

7

YP-920

20

YP-908

8

YP-921

21

YP-909

9

YP-922

22

YP-910

10

YP-923

23

YP-911

11

YP-924

24

YP-912

12

YP-925

25

YP-913

13

YP-930

30

YP-914

14

YP-935

35

YP-915

15

YP-940

40

YP-916

16

YP-945

45

YP-917

17

YP-950

50

NAME

DATE

ARTICLE NO:

REVISION:

TITLE:

DRAWN

Dursun Daşdemir

20.06.12

CHECKED

Ali Altınışık

20.06.12

COMMENTS: This drawing is subject to technical modification without prior notice. Typographical and other errors do not justify any claims for damages. All dimensions should be verified using an actual produced part.

Yükseltme Parçaları



ALTINKAYA
ENCLOSURES FOR ELECTRONICS

www.altinkaya.com.tr

DİKKAT: BU RESİM VE ÖRÜN ÖNCEDEN HABER VERİLMEKSİZİN DEĞİŞTİRİLEBİLİR. RESİM ÇİZİLMİŞ HATASIZ OLMASINA ÇALIŞILMASINA RAĞMEN RESİMDE HATALAR BULUNABİLİR. RESİMDEKİ HATALARDAN DOLAYI OLUSABİLECEK ZARARLAR İÇİN ALTINKAYA HIÇ BİR SORUMLULUK KABUL ETMEZ. BUTÜN ÖLÇÜLER KULLANILMADAN ÖNCE ÜRETİLMİŞ GERÇEK NÜMUNEDEN KONTROL EDİLMELİDİR.

DWG NO.

YP-9xx

A4

PROPRIETARY AND CONFIDENTIAL
THE INFORMATION CONTAINED IN THIS DRAWING IS THE SOLE PROPERTY OF ALTINKAYA ENCLOSURES. ANY REPRODUCTION IN PART OR AS A WHOLE WITHOUT THE WRITTEN PERMISSION OF ALTINKAYA ENCLOSURES IS PROHIBITED.

MATERIAL: PA66

WEIGHT:

SCALE:2:1

SHEET OF

