



Product Datasheet
Lens Series
Last update: 21/1/2014

DETAILS

Product Number: BK-LED-097WB15

Type: Lens

Color: Clear

Diameter: 13.00mm

Height: 7.40mm

Shape: Round

Optic Material: PMMA

Holder Material: PC

ROHS Compliant: Yes

Date Updated: 8/1/2014

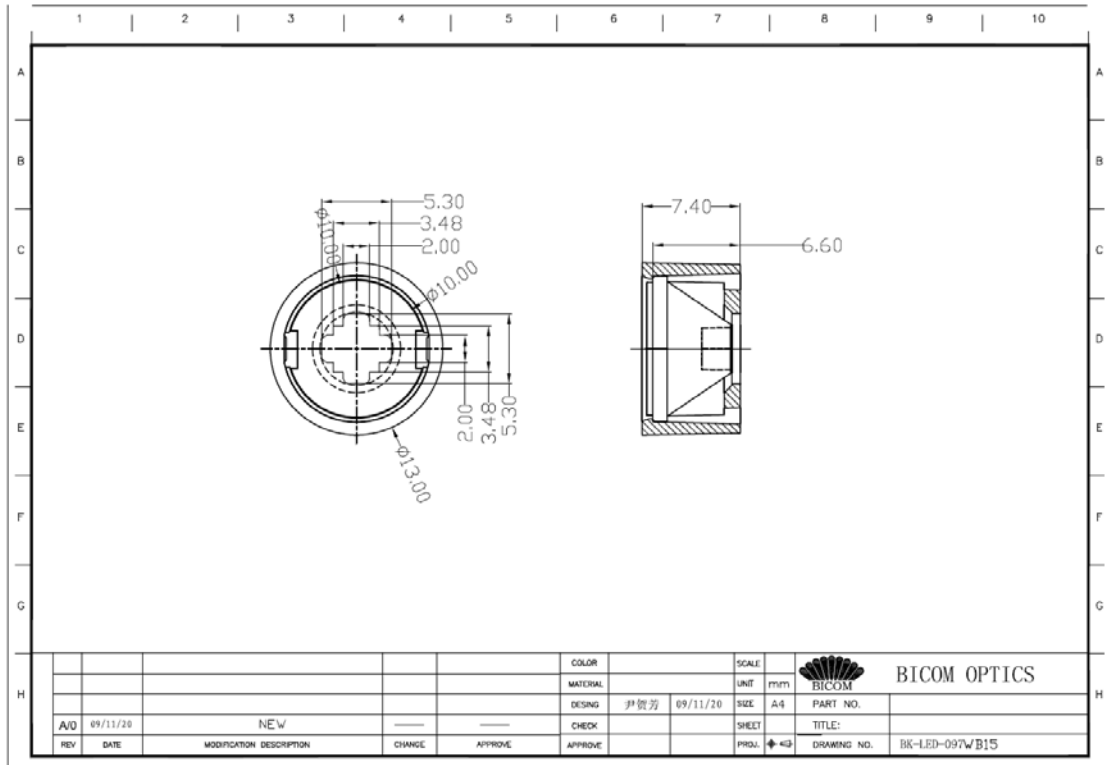


Optical properties

LED	FWHM (50%)	FWHM (10%)	Efficiency	cd/lm	Beam Type
XLamp XP-G	23.0°	45.4°	89.8%	4.14	Middle

Shenzhen Baikang Optical Co.,Ltd.
Add: B4 Building, Xinjianxing Industrial Park,
Fengxin Road, Guangming District, Shenzhen
Mail: 518107
www.bicomoptics.com

Skype: szbaikang
Fax: +86 755 82033711
Phone: +86 755 29199996
MSN: szbaikang@hotmail.com
E-mail: sales@bicomoptics.com

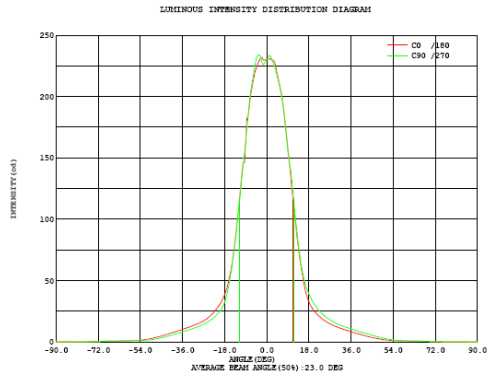
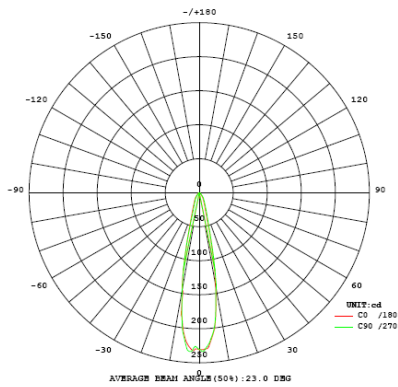


Shenzhen Baikang Optical Co.,Ltd.
 Add: B4 Building, Xinjianxing Industrial Park,
 Fengxin Road, Guangming District, Shenzhen
 Mail: 518107
 www.bicomoptics.com

Skype: szbaikang
 Fax: +86 755 82033711
 Phone: +86 755 29199996
 MSN: szbaikang@hotmail.com
 E-mail: sales@bicomoptics.com

XLamp XP-G

I: 0.35A



Intensity data:(deg , cd) C0 /180

A	I	A	I	A	I	A	I	A	I	A	I
-90.0	0.0111	-58.5	1.082	-27.0	17.13	4.5	218.2	36.0	8.356	67.5	0.3972
-88.5	0.0211	-57.0	1.161	-25.5	18.92	6.0	204.8	37.5	7.475	69.0	0.3251
-87.0	0.0388	-55.5	1.233	-24.0	21.40	7.5	184.7	39.0	6.630	70.5	0.2552
-85.5	0.0710	-54.0	1.390	-22.5	24.40	9.0	157.6	40.5	5.723	72.0	0.2729
-84.0	0.0577	-52.5	1.670	-21.0	28.09	10.5	128.5	42.0	4.981	73.5	0.2197
-82.5	0.0588	-51.0	2.156	-19.5	32.20	12.0	102.3	43.5	4.221	75.0	0.1797
-81.0	0.1021	-49.5	2.689	-18.0	38.41	13.5	76.77	45.0	3.564	76.5	0.1276
-79.5	0.1331	-48.0	3.350	-16.5	47.72	15.0	57.02	46.5	2.955	78.0	0.1365
-78.0	0.1875	-46.5	3.978	-15.0	62.07	16.5	41.50	48.0	2.389	79.5	0.1243
-76.5	0.2086	-45.0	4.790	-13.5	81.93	18.0	32.79	49.5	1.968	81.0	0.0877
-75.0	0.2197	-43.5	5.610	-12.0	108.9	19.5	27.23	51.0	1.566	82.5	0.0732
-73.5	0.2330	-42.0	6.476	-10.5	139.7	21.0	23.55	52.5	1.260	84.0	0.0311
-72.0	0.2885	-40.5	7.392	-9.0	164.1	22.5	20.64	54.0	1.105	85.5	0.0433
-70.5	0.3706	-39.0	8.316	-7.5	191.4	24.0	18.41	55.5	0.9664	87.0	0
-69.0	0.4837	-37.5	9.212	-6.0	210.9	25.5	16.35	57.0	0.9020	88.5	0
-67.5	0.5259	-36.0	10.12	-4.5	222.9	27.0	14.68	58.5	0.8366	90.0	0
-66.0	0.5736	-34.5	11.12	-3.0	230.2	28.5	13.39	60.0	0.7656		
-64.5	0.6679	-33.0	12.16	-1.5	229.7	30.0	12.17	61.5	0.6946		
-63.0	0.7900	-31.5	13.30	0.0	230.9	31.5	11.11	63.0	0.6624		
-61.5	0.8920	-30.0	14.37	1.5	230.9	33.0	10.17	64.5	0.5510		
-60.0	0.9664	-28.5	15.67	3.0	229.3	34.5	9.262	66.0	0.4971		

Electricity Parameter:

Voltage : 3.200 V Current : 0.3500 A
 Power P: 1.120 W Power Factor: 1.000

Optical Parameter (Distance:3.160m) :

Luminous flux = 99.18 lm Efficiency: Eff=88.56 lm/W
 Avg. Beam angle: @ (25%):30.4deg @ (50%):23.0deg @ (75%):16.7deg @ (10%):45.4deg
 C0 /180: @ (25%):30.5deg @ (50%):23.0deg @ (75%):16.9deg @ (10%):45.4deg
 C0 /180 I_{max} = 232.1 cd (G=-2.5deg) I_o = 230.9 cd

H(β) Range:-90 - 90DEG V(B) Range:-90 - 90DEG
 H(β) Interval: 0.5DEG V(B) Interval: 0.5DEG
 Test Speed: HIGH Test System:EVERFINE GO-SPEC316 SYSTEM V1.0.255
 Temperature:25.3DEG Humidity:65.0%
 Operators:BICOM Test Distance:3.160m [K=1.0000]
 Test Date:2012-06-30 Remarks:

Shenzhen Baikang Optical Co.,Ltd.
 Add: B4 Building, Xinjianxing Industrial Park,
 Fengxin Road, Guangming District, Shenzhen
 Mail: 518107
 www.bicomoptics.com

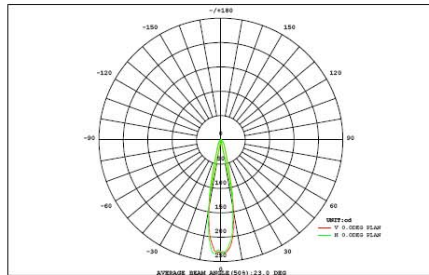
Skype: szbaikang
 Fax: +86 755 82033711
 Phone: +86 755 29199996
 MSN: szbaikang@hotmail.com
 E-mail: sales@bicomoptics.com

XLamp XP-G

I: 0.35A

LUMINAIRE PHOTOMETRIC TEST REPORT

NAME: DB097WB-15°	TYPE:	WEIGHT:
DIMENSION:	SPECIFICATION:	SERIAL No.:
MANUFACTURER:	SURFACE:	PROTECTION ANGLE:



DATA OF LAMP		PHOTOMETRIC DATA	
MODEL	XPG	Imax (cd)	233.9
NOMINAL POWER (W)	1	AVAILABILITY (%)	61.0
RATED VOLTAGE (V)	3.2	Avai. FLUX (lm)	38.42
NOMINAL FLUX (lm)	63.000	EFFICIENCY (%)	89.8
LAMPS INSIDE	1	TOTAL FLUX (lm)	56.55
TEST VOLTAGE (V)	3.2	θ @50% (H,V)	22,23DEG

AREA FLUX DIAGRAM																	UNIT: lm		Φ t	Φ a	
90	0.00	0.00	0.00	0.00	0.00	0.00	0.00	0.00	0.00	0.00	0.00	0.00	0.00	0.00	0.00	0.00	0.00	0.00	0.01	0.00	
80	0.00	0.00	0.00	0.00	0.00	0.00	0.01	0.01	0.01	0.01	0.01	0.00	0.00	0.00	0.00	0.00	0.00	0.00	0.05	0.00	
70	0.00	0.00	0.00	0.00	0.01	0.01	0.01	0.02	0.02	0.02	0.02	0.01	0.01	0.01	0.00	0.00	0.00	0.00	0.14	0.00	
60	0.00	0.00	0.00	0.01	0.01	0.02	0.03	0.04	0.05	0.05	0.04	0.03	0.02	0.01	0.01	0.00	0.00	0.00	0.30	0.00	
50	0.00	0.00	0.00	0.01	0.02	0.03	0.07	0.12	0.16	0.16	0.13	0.08	0.04	0.02	0.01	0.00	0.00	0.00	0.85	0.00	
40	0.00	0.00	0.00	0.01	0.03	0.08	0.17	0.26	0.33	0.33	0.28	0.19	0.09	0.03	0.01	0.01	0.00	0.00	1.83	0.00	
30	0.00	0.00	0.01	0.02	0.05	0.14	0.28	0.44	0.61	0.62	0.47	0.31	0.17	0.06	0.02	0.01	0.00	0.00	3.19	0.39	
20	0.00	0.00	0.01	0.02	0.07	0.20	0.39	0.81	1.77	1.81	0.87	0.44	0.23	0.09	0.02	0.01	0.00	0.00	6.73	4.87	
10	0.00	0.00	0.01	0.02	0.08	0.22	0.48	1.64	5.27	5.36	1.78	0.55	0.27	0.10	0.02	0.01	0.00	0.00	15.8	14.3	
0	0.00	0.00	0.01	0.02	0.08	0.22	0.46	1.63	5.38	5.47	1.77	0.54	0.26	0.10	0.02	0.01	0.00	0.00	16.0	14.4	
-10	0.00	0.00	0.01	0.02	0.06	0.18	0.36	0.73	1.72	1.75	0.79	0.41	0.22	0.08	0.02	0.01	0.00	0.00	6.36	4.40	
-20	0.00	0.00	0.01	0.01	0.04	0.12	0.25	0.38	0.50	0.51	0.41	0.28	0.15	0.05	0.02	0.01	0.00	0.00	2.73	0.06	
-30	0.00	0.00	0.00	0.01	0.02	0.06	0.13	0.21	0.26	0.26	0.23	0.15	0.07	0.03	0.01	0.01	0.00	0.00	1.48	0.00	
-40	0.00	0.00	0.00	0.01	0.02	0.03	0.05	0.08	0.10	0.10	0.09	0.06	0.03	0.02	0.01	0.00	0.00	0.00	0.61	0.00	
-50	0.00	0.00	0.00	0.01	0.01	0.02	0.02	0.03	0.03	0.03	0.03	0.03	0.02	0.01	0.01	0.00	0.00	0.00	0.26	0.00	
-60	0.00	0.00	0.00	0.00	0.01	0.01	0.01	0.02	0.02	0.02	0.02	0.01	0.01	0.01	0.00	0.00	0.00	0.00	0.15	0.00	
-70	0.00	0.00	0.00	0.00	0.00	0.00	0.00	0.01	0.01	0.01	0.01	0.01	0.01	0.00	0.00	0.00	0.00	0.00	0.06	0.00	
-80	0.00	0.00	0.00	0.00	0.00	0.00	0.00	0.00	0.00	0.00	0.00	0.00	0.00	0.00	0.00	0.00	0.00	0.00	0.02	0.00	
-90	0.00	0.00	0.00	0.00	0.00	0.00	0.00	0.00	0.00	0.00	0.00	0.00	0.00	0.00	0.00	0.00	0.00	0.00	0.00	0.00	
	Φ t	0.00	0.02	0.06	0.17	0.50	1.36	2.74	6.43	16.2	16.5	6.93	3.08	1.60	0.63	0.20	0.08	0.02	0.00	57	---
	Φ a	0.00	0.00	0.00	0.00	0.00	0.08	4.25	14.3	14.6	4.81	0.32	0.00	0.00	0.00	0.00	0.00	0.00	---	38	

H(β) Range:-90 - 90DEG
H(β) Interval: 0.5DEG
Test Speed: HIGH
Temperature:25.3DEG
Operators:BICOM
Test Date:2012-06-30

V(B) Range:-90 - 90DEG
V(B) Interval: 0.5DEG
Test System:EVERFINE GO-SPEC316 SYSTEM V1.0.255
Humidity:65.0%
Test Distance:3.160m [K=1.0000]
Remarks:

Shenzhen Baikang Optical Co.,Ltd.
Add: B4 Building, Xinjianxing Industrial Park,
Fengxin Road, Guangming District, Shenzhen
Mail: 518107
www.bicomoptics.com

Skype: szbaikang
Fax: +86 755 82033711
Phone: +86 755 29199996
MSN: szbaikang@hotmail.com
E-mail: sales@bicomoptics.com