



Product Datasheet
Lens Series
Last update: 21/1/2014

DETAILS

Product Number: BK-LED-097WB941
Type: Lens
Color: Clear
Diameter: 13.00mm
Height: 7.40mm
Shape: Round
Optic Material: PC
Holder Material: PC
ROHS Compliant: Yes
Date Updated: 8/1/2014

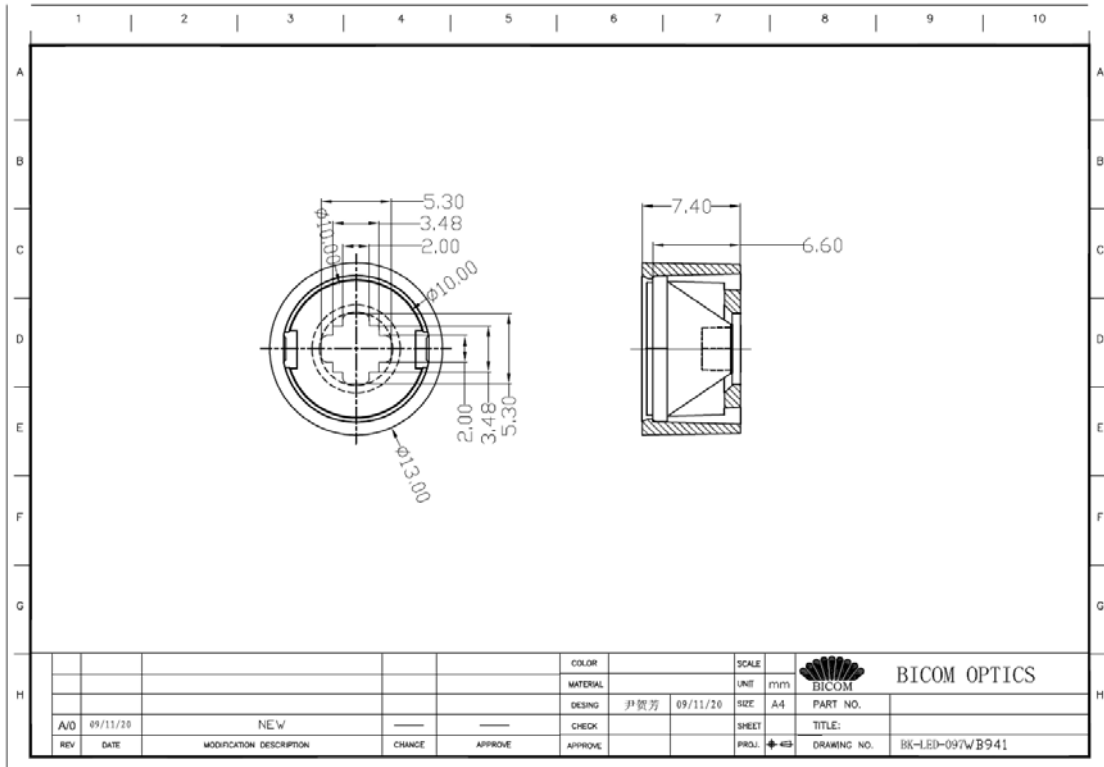


Optical properties

LED	FWHM (50%)	FWHM (10%)	Efficiency	cd/lm	Beam Type
XLamp XP-G	21.9°	46.5°	89.0%	4.22	Middle

Shenzhen Baikang Optical Co.,Ltd.
Add: B4 Building, Xinjianxing Industrial Park,
Fengxin Road, Guangming District, Shenzhen
Mail: 518107
www.bicomoptics.com

Skype: szbaikang
Fax: +86 755 82033711
Phone: +86 755 29199996
MSN: szbaikang@hotmail.com
E-mail: sales@bicomoptics.com

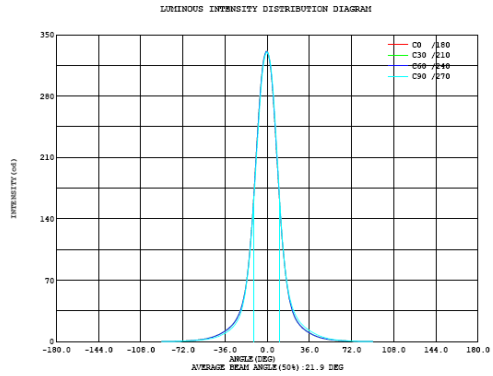
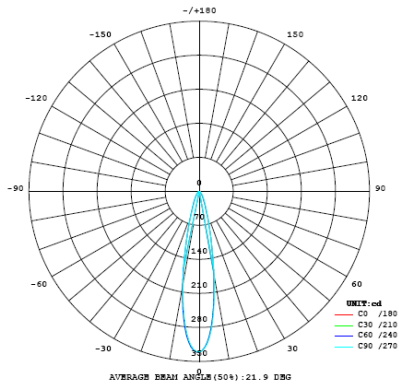


Shenzhen Baikang Optical Co.,Ltd.
 Add: B4 Building, Xinjianxing Industrial Park,
 Fengxin Road, Guangming District, Shenzhen
 Mail: 518107
 www.bicomoptics.com

Skype: szbaikang
 Fax: +86 755 82033711
 Phone: +86 755 29199996
 MSN: szbaikang@hotmail.com
 E-mail: sales@bicomoptics.com

XLamp XP-G

I: 0.35A



Intensity data:(deg , cd) C0 /180

A	I	A	I	A	I	A	I	A	I	A	I
-90.0	0.0202	-58.0	1.908	-26.0	25.93	6.0	260.9	38.0	8.357	70.0	0.5993
-88.0	0.0445	-56.0	2.260	-24.0	31.53	8.0	216.9	40.0	7.046	72.0	0.4935
-86.0	0.0782	-54.0	2.675	-22.0	38.97	10.0	172.4	42.0	5.920	74.0	0.4021
-84.0	0.1159	-52.0	3.175	-20.0	49.46	12.0	131.7	44.0	4.975	76.0	0.3232
-82.0	0.1669	-50.0	3.785	-18.0	64.56	14.0	98.86	46.0	4.170	78.0	0.2576
-80.0	0.2238	-48.0	4.508	-16.0	86.02	16.0	73.89	48.0	3.500	80.0	0.1836
-78.0	0.3009	-46.0	5.372	-14.0	116.0	18.0	56.05	50.0	2.965	82.0	0.1336
-76.0	0.3800	-44.0	6.370	-12.0	153.3	20.0	42.30	52.0	2.513	84.0	0.0903
-74.0	0.4754	-42.0	7.497	-10.0	198.3	22.0	33.05	54.0	2.138	86.0	0.0556
-72.0	0.5844	-40.0	8.789	-8.0	243.1	24.0	26.58	56.0	1.833	88.0	0.0259
-70.0	0.7066	-38.0	10.27	-6.0	282.6	26.0	21.92	58.0	1.575	90.0	0.0135
-68.0	0.8349	-36.0	11.92	-4.0	311.4	28.0	18.46	60.0	1.358		
-66.0	0.9920	-34.0	13.80	-2.0	327.4	30.0	15.70	62.0	1.165		
-64.0	1.170	-32.0	16.01	0.0	330.8	32.0	13.43	64.0	0.9999		
-62.0	1.381	-30.0	18.63	2.0	321.5	34.0	11.49	66.0	0.8507		
-60.0	1.624	-28.0	21.85	4.0	297.8	36.0	9.798	68.0	0.7226		

Electricity Parameter:

Voltage : 3.000 V Current : 0.3500 A
 Power P: 1.050 W Power Factor: 1.000

Optical Parameter (Distance:5.980m):

Luminous flux = 92.99 lm Efficiency: Eff=88.57 lm/W
 Avg. Beam angle: @ (25%):31.8deg @ (50%):21.9deg @ (75%):14.5deg @ (10%):46.5deg
 C0 /180: @ (25%):31.8deg @ (50%):21.9deg @ (75%):14.5deg @ (10%):46.5deg
 C0 /180 I_{max} = 330.8 cd (G=0.0deg) I_o = 330.8 cd

H(β) Range:-90 - 90DEG V(B) Range:-90 - 90DEG
 H(β) Interval: 0.5DEG V(B) Interval: 0.5DEG
 Test Speed: HIGH Test System:EVERFINE GO-2000B_V1 SYSTEM V2.0.263
 Temperature:25.3DEG Humidity:65.0%
 Operators:BICOM Test Distance:5.980m [K=1.0000]
 Test Date:2012-05-31 Remarks:

Shenzhen Baikang Optical Co.,Ltd.
 Add: B4 Building, Xinjianxing Industrial Park,
 Fengxin Road, Guangming District, Shenzhen
 Mail: 518107
 www.bicomoptics.com

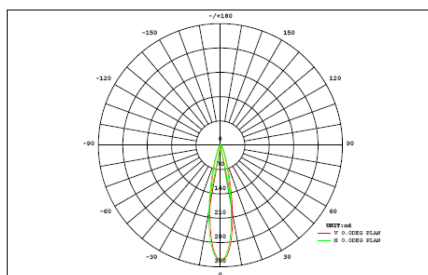
Skype: szbaikang
 Fax: +86 755 82033711
 Phone: +86 755 29199996
 MSN: szbaikang@hotmail.com
 E-mail: sales@bicomoptics.com

XLamp XP-G

I: 0.35A

LUMINAIRE PHOTOMETRIC TEST REPORT

NAME: BK-DB097WB-941S	TYPE:	WEIGHT: /
DIMENSION:	SPECIFICATION:	SERIAL No. :
MANUFACTURER:	SURFACE:	PROTECTION ANGLE: /



DATA OF LAMP		PHOTOMETRIC DATA	
MODEL	XPG	I _{max} (cd)	330.8
NOMINAL POWER (W)	6	AVAILABILITY (%)	62.3
RATED VOLTAGE (V)	3	Avai. FLUX (lm)	54.83
NOMINAL FLUX (lm)	88.000	EFFICIENCY (%)	89.0
LAMPS INSIDE	1	TOTAL FLUX (lm)	78.30
TEST VOLTAGE (V)	3	θ @50% (H,V)	22,22DEG

VERTICAL (DEG)	AREA FLUX DIAGRAM																UNIT: lm		Φ t	Φ a			
	0.00	0.00	0.00	0.00	0.00	0.00	0.00	0.00	0.00	0.00	0.00	0.00	0.00	0.00	0.00	0.00	0.00	0.00	0.00	0.00	0.00	0.02	0.00
90	0.00	0.00	0.00	0.00	0.00	0.00	0.00	0.00	0.00	0.00	0.00	0.00	0.00	0.00	0.00	0.00	0.00	0.00	0.00	0.00	0.00	0.02	0.00
80	0.00	0.00	0.00	0.00	0.00	0.01	0.01	0.01	0.01	0.01	0.01	0.01	0.01	0.01	0.00	0.00	0.00	0.00	0.00	0.00	0.10	0.00	
70	0.00	0.00	0.00	0.01	0.01	0.02	0.02	0.03	0.03	0.03	0.03	0.02	0.02	0.01	0.01	0.00	0.00	0.00	0.00	0.00	0.25	0.00	
60	0.00	0.00	0.00	0.01	0.02	0.03	0.05	0.07	0.08	0.08	0.07	0.05	0.04	0.02	0.01	0.00	0.00	0.00	0.00	0.00	0.55	0.00	
50	0.00	0.00	0.01	0.02	0.03	0.06	0.10	0.15	0.19	0.19	0.16	0.11	0.07	0.04	0.02	0.01	0.00	0.00	0.00	0.00	1.15	0.00	
40	0.00	0.00	0.01	0.02	0.05	0.11	0.20	0.31	0.40	0.40	0.33	0.22	0.12	0.06	0.03	0.01	0.00	0.00	0.00	0.00	2.26	0.00	
30	0.00	0.00	0.01	0.03	0.07	0.17	0.34	0.58	0.83	0.85	0.62	0.37	0.19	0.09	0.03	0.01	0.00	0.00	0.00	0.00	4.20	0.56	
20	0.00	0.00	0.01	0.03	0.09	0.23	0.52	1.21	2.48	2.56	1.31	0.58	0.27	0.11	0.04	0.01	0.00	0.00	0.00	9.48	7.12		
10	0.00	0.00	0.01	0.04	0.10	0.27	0.68	2.37	6.82	7.14	2.69	0.79	0.32	0.13	0.04	0.01	0.00	0.00	0.00	21.4	19.5		
0	0.00	0.00	0.01	0.04	0.10	0.26	0.67	2.42	6.97	7.29	2.74	0.78	0.31	0.13	0.04	0.01	0.00	0.00	0.00	21.8	19.9		
-10	0.00	0.00	0.01	0.03	0.09	0.22	0.49	1.21	2.68	2.76	1.31	0.55	0.25	0.11	0.04	0.01	0.00	0.00	0.00	9.76	7.42		
-20	0.00	0.00	0.01	0.03	0.06	0.15	0.30	0.52	0.75	0.77	0.55	0.33	0.17	0.08	0.03	0.01	0.00	0.00	0.00	3.77	0.38		
-30	0.00	0.00	0.01	0.02	0.04	0.09	0.16	0.25	0.31	0.32	0.27	0.18	0.10	0.05	0.02	0.01	0.00	0.00	0.00	1.85	0.00		
-40	0.00	0.00	0.01	0.02	0.03	0.05	0.08	0.11	0.13	0.14	0.12	0.09	0.06	0.03	0.02	0.01	0.00	0.00	0.00	0.89	0.00		
-50	0.00	0.00	0.00	0.01	0.02	0.03	0.04	0.05	0.06	0.06	0.06	0.04	0.03	0.02	0.01	0.00	0.00	0.00	0.00	0.45	0.00		
-60	0.00	0.00	0.00	0.01	0.01	0.02	0.02	0.03	0.03	0.03	0.03	0.02	0.02	0.01	0.01	0.00	0.00	0.00	0.00	0.23	0.00		
-70	0.00	0.00	0.00	0.00	0.00	0.01	0.01	0.01	0.01	0.01	0.01	0.01	0.01	0.01	0.00	0.00	0.00	0.00	0.00	0.10	0.00		
-80	0.00	0.00	0.00	0.00	0.00	0.00	0.00	0.00	0.00	0.00	0.00	0.00	0.00	0.00	0.00	0.00	0.00	0.00	0.00	0.02	0.00		
-90	0.00	0.00	0.00	0.00	0.00	0.00	0.00	0.00	0.00	0.00	0.00	0.00	0.00	0.00	0.00	0.00	0.00	0.00	0.00	0.00	0.00	0.00	
	-90	-80	-70	-60	-50	-40	-30	-20	HORIZONTAL (DEG)	20	30	40	50	60	70	80	90						
Φ t	0.00	0.03	0.11	0.31	0.74	1.72	3.70	9.35	21.8	22.7	10.3	4.17	2.00	0.89	0.36	0.13	0.04	0.00	0.00	78	---		
Φ a	0.00	0.00	0.00	0.00	0.00	0.00	0.30	6.63	19.4	20.3	7.64	0.62	0.00	0.00	0.00	0.00	0.00	0.00	0.00	---	55		

H(β) Range:-90 - 90DEG
H(β) Interval: 0.5DEG
Test Speed: HIGH
Temperature:25.3DEG
Operators:BICOM
Test Date:2012-05-31

V(B) Range:-90 - 90DEG
V(B) Interval: 0.5DEG
Test System:EVERFINE GO-2000B_V1 SYSTEM V2.0.263
Humidity:65.0%
Test Distance:5.980m [K=1.0000]
Remarks:

Shenzhen Baikang Optical Co.,Ltd.
Add: B4 Building, Xinjianxing Industrial Park,
Fengxin Road, Guangming District, Shenzhen
Mail: 518107
www.bicomoptics.com

Skype: szbaikang
Fax: +86 755 82033711
Phone: +86 755 29199996
MSN: szbaikang@hotmail.com
E-mail: sales@bicomoptics.com