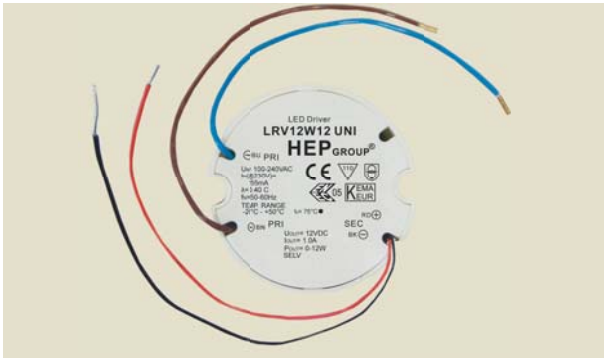


100V-240V AC



Approval Marks



Certified

EN 61347-1:2008
EN 61347-2-13:2006
EN 62384:2006

Electronic

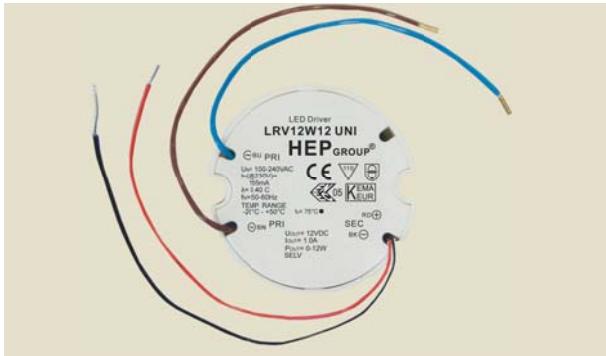
Parameter	Conditions	Min	Nom	Max	Unit
I/P Voltage Range		90	100-240	264	Vac
Input Frequency		-	50-60	-	Hz
Output Power (Pout)	Regular LED 0.04-0.1W	0	-	12	W
Input Current (Iin)	25°C, Nominal Input @ 230VAC	-	155	-	mA
Output Voltage (Vout)		11.4	12	12.6	Vdc
Output Current (Iout)	25°C, Nominal Input	0	-	1000	mA
THD		-	-	20	%
Efficiency	Full Load	-	80	-	%
Standby Power		-	-	1	W
Rise Time		-	-	500	ms
Start-up Delay		-	-	500	ms
Ripple & Noise	(peak to peak @ full load)	-	40	-	%
Output Current Overshoot		-	-	40	%
Power Factor	Full Load		0.40	-	-
Protection			Short Circuit Protection		
			Overload Protection		
Case Temp. (Tc)	Normal Conditions	-	-	+75	°C
External Operating Temperature		-20	-	+50	°C
Operating humidity range		10	-	95	%
Storage Temp. range		-25	-	+85	°C
Lifetime	at Max Case hot spot Temperature		-	30,000	hrs
Case Dimensions	L x W x H	55	-	22	mm

Lamp Type Regular LED 0.04-0.1W

Application Space

Indoor Use

100V-240V AC



Approval Marks

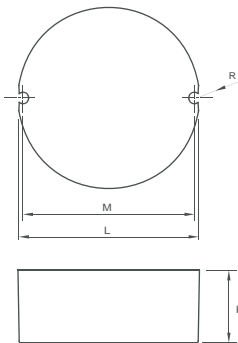


Certified

EN 61347-1:2008
EN 61347-2-13:2006
EN 62384:2006

Physical

Parameter



L : 55 mm H : 22 mm
M : 52 mm K : mm
N : mm R : 1.75 mm
W : mm

Slot On One Side Allowing Alignment : M+/-3 mm

Tolerance : $\geq 0 \sim 100 \geq +/ -0.5\text{mm}$
 $100 \geq +/ -1 \text{ mm}$

Terminal Block : Hard Wires (Double insulation cable)

PRI : 1332#18 Blue 194mm
1332#18 Brown 194mm

SEC : 1332#22 Red/Black 149mm

Housing Material : Polycarbonate

Soldering : Lead-Free, Comply With RoHS

Label : Surface Print

Wiring Diagram

