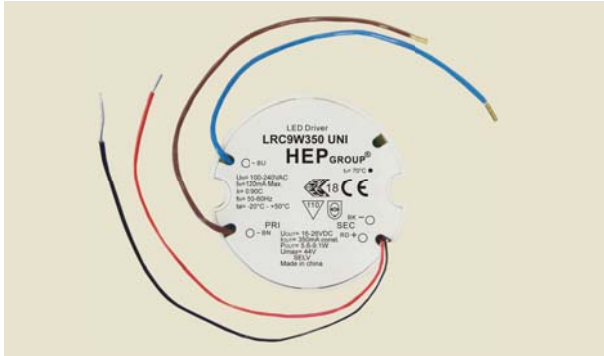


Constant Current LED Driver



Approval Marks



Australia Certificate No. : TUV16633E

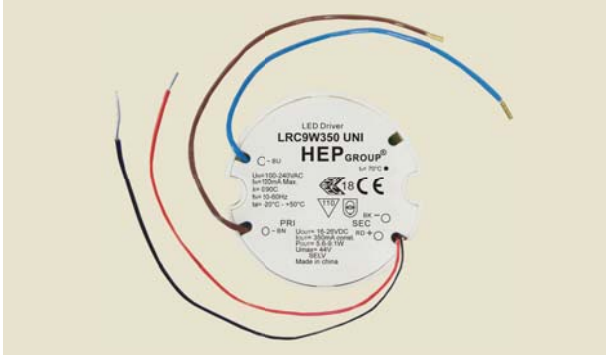
Certified

EN 61347-1:2008+A1
EN 61347-2-13:2006
EN 62384:2006+A1

Electronic

Parameter	Conditions	Min	Nom	Max	Unit	
I/P Voltage Range		90	100-240	264	Vac	
Input Frequency		47	50-60	63	Hz	
Input current		-	-	120	mA	
Output Voltage Range	LRC9W200 UNI	-	30-40.5	-	Vdc	
	LRC9W350 UNI	-	16-26	-	Vdc	
	LRC9W450 UNI	-	13-20	-	Vdc	
	LRC9W500 UNI	-	12-18	-	Vdc	
	LRC9W600 UNI	-	10-13.5	-	Vdc	
	LRC9W700 UNI	-	7.2-12.8	-	Vdc	
Output Current Range	LRC9W200 UNI	@25°C	190	200	210	mA
	LRC9W350 UNI	@25°C	332.5	350	367.5	mA
	LRC9W450 UNI	@25°C	427.5	450	472.5	mA
	LRC9W500 UNI	@25°C	475	500	525	mA
	LRC9W600 UNI	@25°C	570	600	630	mA
	LRC9W700 UNI	@25°C	665	700	735	mA
Rated Output power	LRC9W200 UNI		6	-	8.1	W
	LRC9W350 UNI		5.6	-	9.1	W
	LRC9W450 UNI		6	-	9	W
	LRC9W500 UNI		6	-	9	W
	LRC9W600 UNI		6	-	8.1	W
	LRC9W700 UNI		5	-	8.9	W
THD		-	-	20	%	
Efficiency	Full Load	-	80	-	%	
Standby Power		-	-	1	W	
Rise Time		-	500	-	ms	
Start-up Delay		-	500	-	ms	
Ripple current	peak to peak @ full load	-	80	-	%	
Output Current Overshoot		-	-	40	%	
Power Factor	Full Load	0.90	-	-	-	
Protection		Short Circuit Protection				
		Overload Protection				
		Overheat Protection				
RoHS Standard		Compliant				
Case Temp. (Tc)	LRC9W350 UNI	-	-	70	°C	
	LRC9W200 UNI, LRC9W450 UNI, LRC9W500 UNI, LRC9W600 UNI	-	-	75	°C	
	LRC9W700 UNI	-	-	85	°C	
External Operating Temperature		-20	-	+50	°C	
Operating humidity range		10	-	95	%	
Storage Temp. range		-25	-	+85	°C	
Lifetime	at Max Case hot spot Temperature	-	-	30,000	hrs	
Case Dimensions	L x W x H	55	-	22	mm	

Constant Current LED Driver



Approval Marks



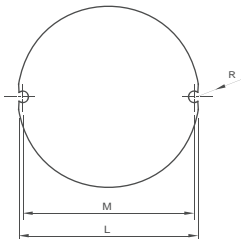
Australia Certificate No. : TUV16633E

Certified

EN 61347-1:2008+A1
 EN 61347-2-13:2006
 EN 62384:2006+A1

Physical

Parameter



L : 55 mm H : 22 mm
 M : 52 mm K : mm
 N : mm R : 1.7 mm
 W : mm
 Tolerance : $\geq 0 \sim 100 \geq \pm 0.5$ mm
 $100 \geq \pm 1$ mm

Terminal Block : Hard Wires : PRI : Blue / Brown 120mm AWG#18
 SEC : Red / Black 180mm AWG#22

Housing Material : Polycarbonate
 Soldering : Lead-Free, Comply With RoHS
 Label : Surface Print

Wiring Diagram

