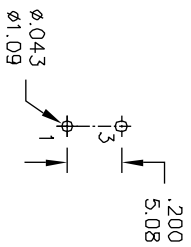


PANEL MOUNTING



P.C. MOUNTING

Model No.	POS 1	POS 2	POS 3
	2MS6	OFF	NONE
Term. Comm.	OPEN	N/A	3-1
SCHEMATIC			

SWITCH FUNCTION

CONTACT MATERIAL	TERMINATION/PLATING	RATINGS
Q Silver	Q = Silver	3 Amps @120 VAC or 28 VDC 1 Amp @250VAC 0.4 Volt-Amps(VA) max. @20V max. (AC or DC)
S	S = Silver, pure-1in	
C	C = Gold over silver	
K	K = Gold over silver, pure-1in	
R	R = Gold	
G	G = Gold, pure-1in	

MATERIALS

CASE - Diallyl phthalate(DAP)(UL94V-0)
 ACTUATOR - Brass, chrome plated
 BUSHING - Brass, nickel plated
 HOUSING - Stainless Steel
 TERMINALS/CONTACT - Brass.
 RoHS & Lead Free

SPECIFICATIONS

MECHANICAL LIFE: 30,000 make-and-break cycles.
 CONTACT RESISTANCE: 20 mΩ max. Initial @ 24VDC
 100mA for both silver and gold plated contacts.
 INSULATION RESISTANCE: 1,000 MΩ min.
 DIELECTRIC STRENGTH: 1,000 Vrms min. @sea level.
 OPERATING TEMPERATURE: -30°C to 85°C.

SCALE (比例) : 3 : 2

TOLERANCE (公差) :

0.00 mm ± 0.25mm
 0.0 mm ± 0.40mm
 ANGULAR : ± 5°
 FILE NAME : 2MSP0871

ZONE	REV	DESCRIPTION	DATE	APPD.
A				
B				
C				
D				
E				
F				
G				
H				

APPD.	QTY:			PART NAME:
CHKD.	SCALE:	圓達實業股份有限公司 DIPTRONICS MANUFACTURING INC.		Sub - Miniature Toggle Switches
DR:	REV:	UNITS:	PART NO:	DMC NO:
DESIGN:		MM	2MS6T1B 1M2ONS	RD-2M-813
			FINISH:	