

Appearance & Shape: To be free from any defect such as flow, burrs, unevenness etc, As per IEC standards.
Effective Parameters irrespective of material grade (per piece)

- Effective Length (L_e): 392.6mm
 - Effective Area (A_e): 521.7mm²
 - Effective Area (A_{Min}): 518.5mm²
 - Effective Volume (V_e): 204819mm³
- Approximate weight : 1000g/pc**



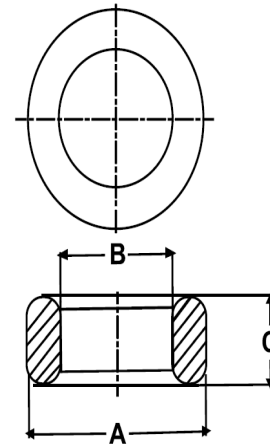
T15222 OL (Un-coated)

Test Conditions: 10kHz/150mV/CFR COIL,N=01/Lo=Zero/25°C

Material Grade	Approx. (μ_{iac})	AL Value (nH)	Ordering code
CF196	2000 \pm 20%	3300 +30%/-20%	CF196T15222
CF139	2100 \pm 20%	3500 +30%/-20%	CF139T15222
CF130	3000 \pm 20%	5000 +30%/-20%	CF130T15222
CF265	5000 \pm 20%	8350 +30%/-20%	CF265T15222
CF195A	5000 \pm 20%	8350 +30%/-20%	CF195AT15222
CF190	6000 \pm 20%	10000 +30%/-20%	CF190T15222
CF197	7000 \pm 20%	11700 +30%/-20%	CF197T15222

Dimensions(Un-coated Core)

Dimension	Nominal (in mm)	Maximum (in mm)	Minimum (in mm)
A	152.0	157.0	147.0
B	104.0	107.6	100.4
C	22.0	22.5	21.5



For general terms and conditions please visit: http://www.cosmoferrites.com/Downloads/Downloads/bcb70e7c-ae33-40ec-a881-0d5120db57b6_GTC.pdf